



THE JUNIPER AT HAWTHORN FARM

FUNCTIONAL
RANCH
DESIGN



3,339 SQ FT | 3 BEDROOMS | 2.5 BATHROOMS | TOWER EFFECT STAIRCASE | RANCH

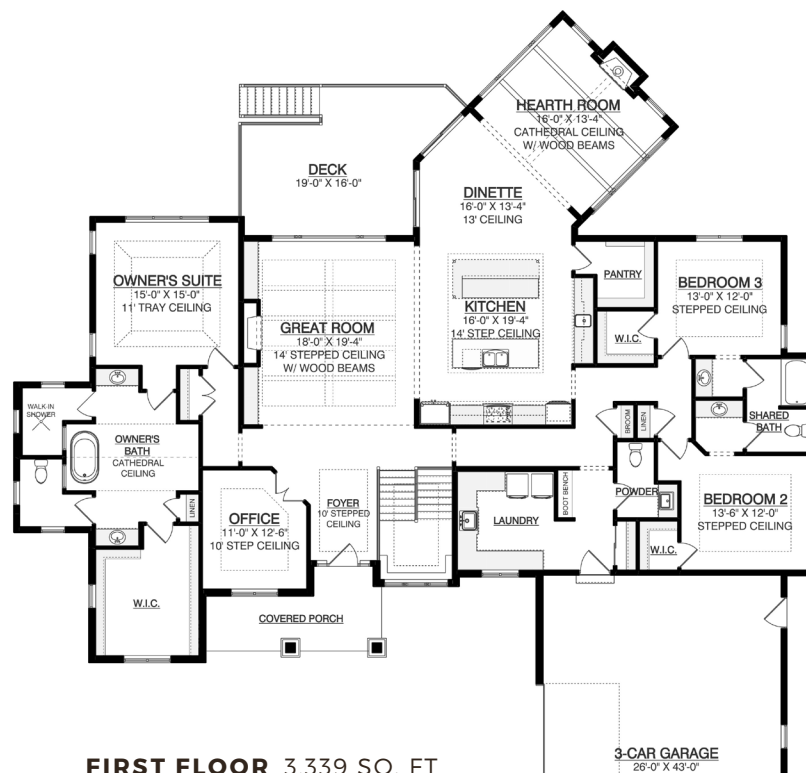
Step into a ranch-style home designed for flow and functionality. The Juniper by Espire Homes is a spacious, open-concept, ranch-style home with plenty of room for life's daily activities.

Open-concept living begins with stunning 14-foot ceilings and expansive windows in the great room. Built for entertaining, the kitchen features dual islands, a beverage center, and seating. Beside the dinette is the hearth room, featuring a stone and tongue-and-groove wood-planked fireplace. The owner's suite is finished with a tray ceiling, and the luxurious bathroom features breathtaking tile work, a walk-in shower, and dressing area. A unique tower staircase connects the lower level to the main. This space serves as your home cinema with a sunken theatre room and bar area.

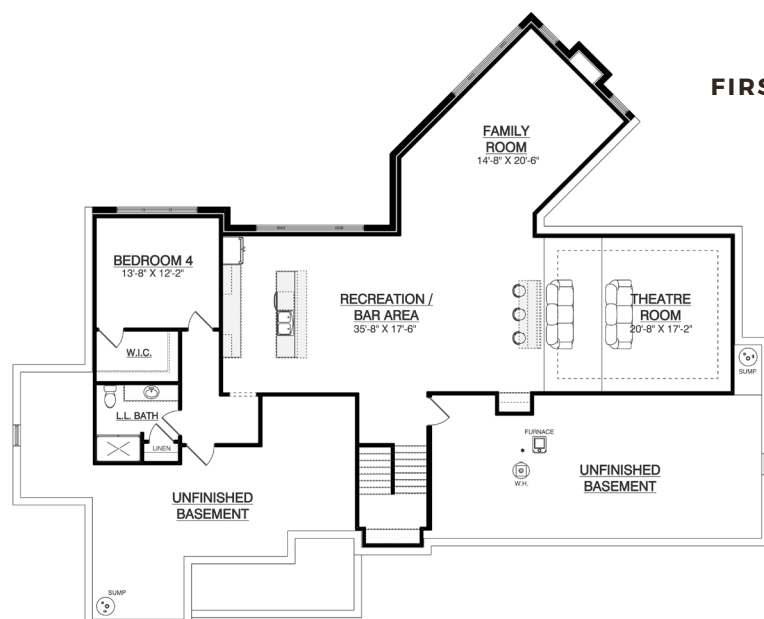
At Espire, our goal is to help families find the perfect design, budget, and plan for their home. Espire Homes is our signature division of custom luxury homes featuring high-end materials and finishes. Forget the one-size-fits-all approach to construction. Our flexible, comprehensive approach allows you to scale "Home" to what's right for you.

STANDARD FEATURES

- Versatile approach and customization
- Design and 3D architecture
- High-touch service experience
- Skilled team, contractor, and supplier network
- Design consultation and plan customization
- Budget and timeline planning
- Building site consultation
- Focus on Energy Certified New Home



FIRST FLOOR 3,339 SQ. FT



LOWER LEVEL 1,755 SQ. FT

Esquire YOUR HOME FOR BUILDING HOME.

