



THE SPRUCE

AT REDFORD HILLS

2023
PARADE
OF HOMES
MODEL



2,681 SQ. FT. | 3 BEDROOMS | 2.5 BATHS | PREP PANTRY | RANCH

Espire Homes is thrilled to unveil The Spruce, a blend of all the popular elements of our ranch portfolio of homes with a distinct, eye-catching exterior.

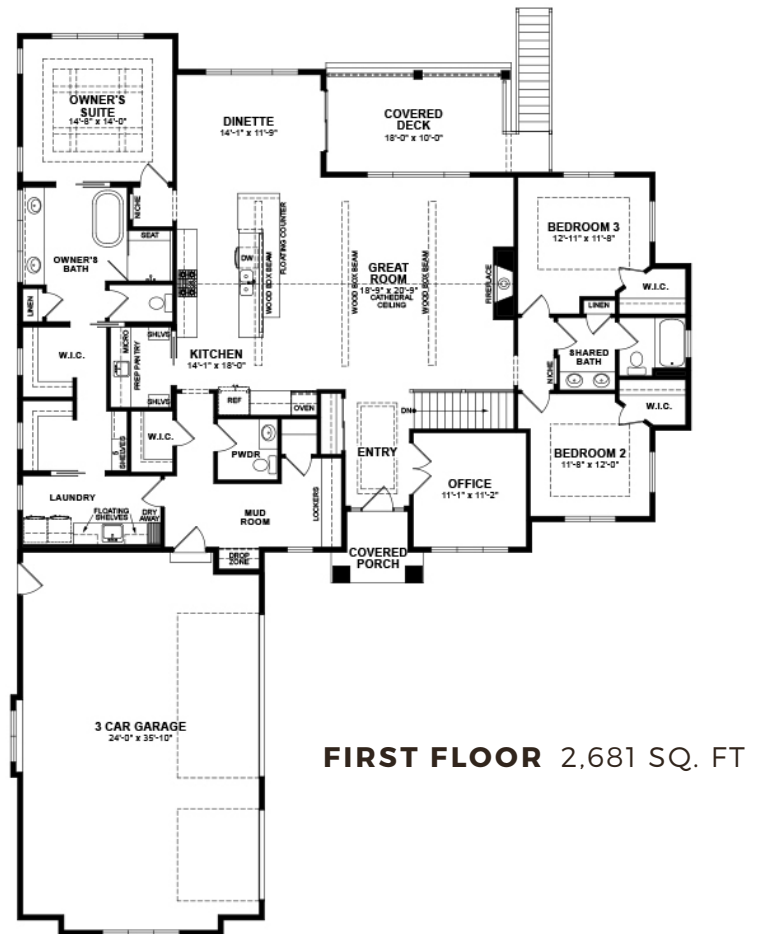
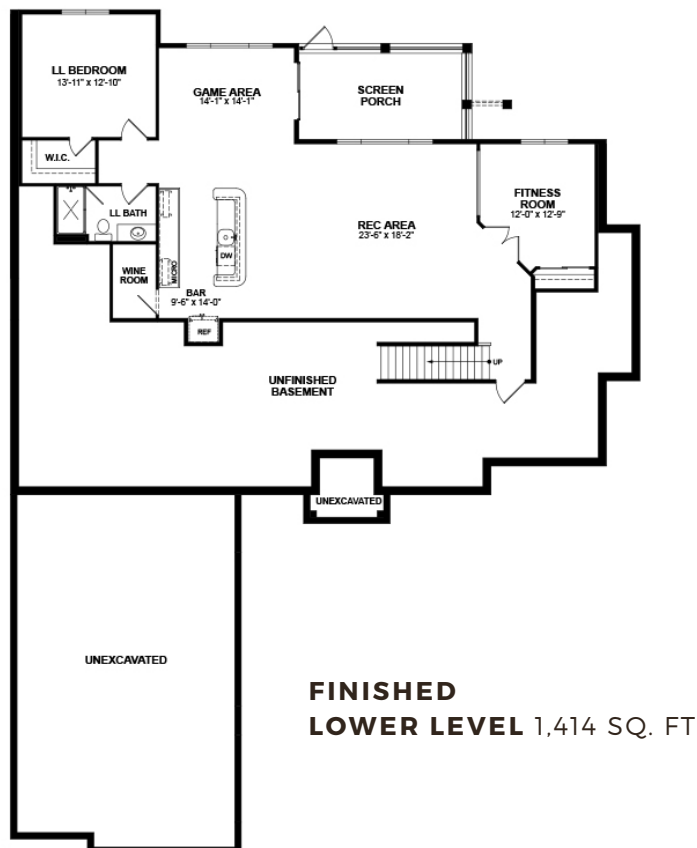
As for the interior, when you come into the covered entryway you'll discover an expansive great room with tons of natural light. Entering the kitchen, you'll be delighted by features like a double-oven, a unique island with waterfall sides, and a sleek wood-edge floating breakfast bar. The luxurious private owner's suite showcases a gorgeous ceiling with poplar beams and shiplap, adding to the modern flare. The private bathroom boasts ceiling-hung mirrors, which is a truly unique element. On the opposite side of the main level, you'll find two secondary bedrooms each fitted with walk-in closets and a shared full bathroom.

2,681 SQ. FT. | 3 BEDROOMS | 2.5 BATHS | PREP PANTRY | RANCH

At Espire, our goal is to help families find the perfect design, budget, and plan for their home. Espire Homes is our signature division of custom luxury homes featuring high-end materials and finishes. Forget the one-size-fits-all approach to construction. Our flexible, comprehensive approach allows you to scale "Home" to what's right for you.

STANDARD FEATURES

- Versatile approach and customization
- Design and 3D architecture
- High-touch service experience
- Skilled team, contractor, and supplier network
- Design consultation and plan customization
- Budget and timeline planning
- Building site consultation
- Focus on Energy Certified New Home
- Wood beams in great room and kitchen



Espire YOUR HOME FOR BUILDING **HOME.**



OUR HOME 530 Hartbrook Drive, Hartland, WI 53029 **WEB** EspireHomes.com **PHONE** 262-746-2000

