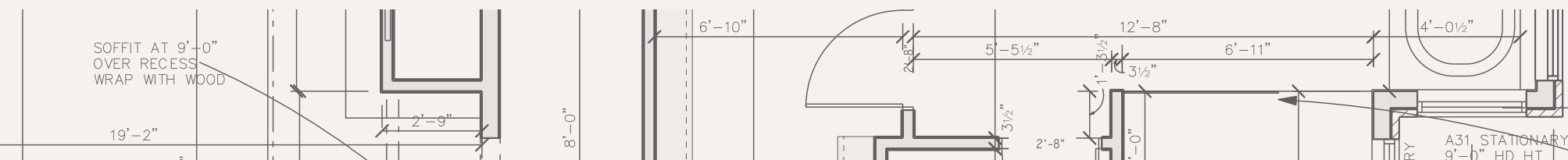




Espire

YOUR HOME FOR
BUILDING **HOME**.



The home building process starts *here.*

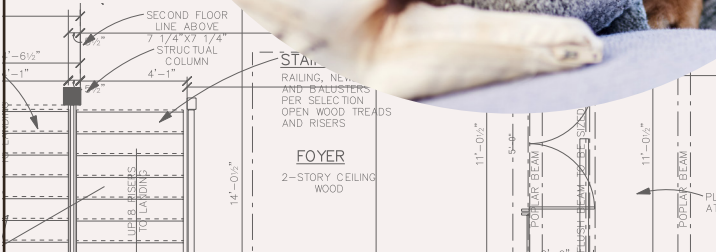


TABLE OF CONTENTS

OVERVIEW

OUR APPROACH 1

OUR FOUR DIVISIONS 3

ESPIRE PACKAGES & STANDARD INCLUSIONS . . . 5

NUPATH PACKAGES & STANDARD INCLUSIONS . . 7

ESPIRE HOMES

THE SORREL 9

THE SEQUOIA 11

THE HAWTHORNE 13

THE MADRONO III 15

THE MADRONO II 17

THE MADRONO I 19

THE WHITE OAK 23

THE BIRCH 25

THE JUNIPER 27

THE FRASER 29

THE MAGNOLIA 31

THE ACACIA II 33

THE ACACIA I 35

THE SPRUCE 37

THE WILLOW 39

THE ALTISSIMA 41

NUPATH HOMES

THE REDWOOD 43

THE SILVER MAPLE 45

THE COTTONWOOD 47

THE SYCAMORE 49

THE HEMLOCK 51

THE BEECHWOOD 53

THE JASMINE 55

THE CYPRESS II 57

THE CYPRESS I 59

THE HICKORY 61

THE PINE RIDGE II 63

THE PINE RIDGE I 65

RENOVATIONS GROUP

OUR DESIGN/BUILD DIVISION 67

Begin with *your vision.* Espire makes it *home.*

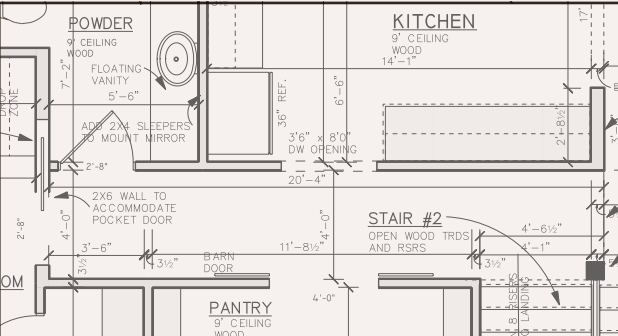
At Espire, our passion isn't about square footage, fixtures, or finishes. As a custom home builder and remodeler that puts our clients' needs first, we help families find the perfect design, budget, and plan for their home. That's why we offer four distinct divisions: Espire Custom Luxury Homes, NuPath Customizable Model Homes, Renovations Group Design/Build Remodeling, and our Espire Home Selling Team, which can assist you with all of your real estate needs. Each division brings you the same high-touch service experience, along with our skilled contractor and supplier network, while allowing for versatility and customization throughout the entire process.

Versatile Approach & Customization

High-touch Service Experience

Design & 3D Architecture

Skilled Team, Contractor & Supplier Network



Expect *excellence* in service,
design, and construction.

Espire is about elevating the construction experience. Involving you in every aspect of the building process so we're able to transform your dream into a beautiful new home or freshly renovated space that uniquely reflects who you are. Be it custom home design, model home building, or renovations, we bring passion and owner-involvement to each project. We are Espire. "Your Home for Building Home."



We are custom *luxury* homes.

As you explore your new construction needs, we're ready with pre-designed floor plans or fully custom home designs to ensure that your home perfectly aligns with your lifestyle.

Signature Home Plans

Fully Custom Designs

Top-of-the-line Finishes



NUPATH
HOMES

We are *customizable* model homes.

We're ready to bring your vision to life with hundreds of ways to customize your package to meet your design needs.

Extensive Models & Floor Plans

Generous Standard Features

Personalized Packages



RENOVATIONS
GROUP

We are design/build *remodeling*.

While remodeling can mean many different things, our skilled team is ready to help with your renovation needs.

Lower Levels & Additions

Whole Homes, Kitchens & Baths

Owner-assisted Remodeling



Esquire
HOME SELLING TEAM
POWERED BY REALTY EXECUTIVES INTEGRITY

We are licensed real estate *professionals*.

By working with the licensed real estate professionals from our team, you're on the right path to finding home – no matter what that means to you.

Purchase Land or Property

Manage Your New Home Build

Sell Your Current Home



Our Espire Packages feature dozens of features that far exceed our customer’s expectations. From the beauty of wood windows to the energy savings of higher insulation values, you’ll find what you expect in a luxury home.

BUILDING INCLUSIONS

- Versatile approach and customization
- Design and 3D architecture
- High-touch service experience
- Skilled team, contractor, and supplier network
- Design consultation and plan customization
- Budget and timeline planning
- Building site consultation
- Focus on Energy Certified New Home
- Form-A-Drain tile footing system with crock and sealed sump pump
- Full 9’ high, 10” thick foundation walls
- Foundation insulation with stucco coat on the top 12”
- Two (2) vinyl basement windows with area wells connected to drain tile system
- Steel beams and tube columns
- Poured concrete basement floor, garage floor, and front stoop

INTERIOR BUILDING INCLUSIONS

- 95% high efficiency furnace
- Honeywell media air cleaner
- 14 seer high efficiency central air conditioner
- Honeywell T6 WiFi programmable thermostat
- Ventilation for kitchen hood, dryer, and bathrooms
- Power-vented 75 gallon gas water heater system
- Rough-in ¾ bath in basement for future bathroom
- Espire Series Kohler plumbing fixtures, pressure balanced, faucets (select styles and finishes)

- 2”x6” , 16” O.C. exterior wall framing with OSB sheathing
- 2”x6” , 16” O.C. exterior garage wall framing with OSB sheathing
- Tyvek house wrap on exterior house and garage walls to prevent air and water penetration
- Flex wrap on all windows and door sills to prevent air infiltration and sill rot
- Engineered I-Joist floor system with T&G high performance floor sheathing, nailed and glued
- Engineered roof trusses, 24” O.C. with OSB sheathing
- R-23 bib insulation in walls
- 2” closed cell foam at all box sills
- R-50 blown in attic insulation
- Wood vinyl clad high-performance casement windows and patio door with wood jambs

- Oasis acrylic tub and shower modules
- Aker acrylic shower pan in owner’s bathroom with ceramic tile walls
- Kohler undermount oval or rectangle vitreous china sinks in bathrooms
- Kohler comfort height elongated toilets
- Sterling by Kohler stainless steel sink in kitchen with Kohler black, brushed nickel, or chrome faucets (select styles)

INTERIOR BUILDING INCLUSIONS CONTINUED

- Kohler pedestal sink in powder room with wide spread black, brushed nickel, or chrome faucet (select styles)
- Garbage disposal with air switch
- Water/ice maker line to refrigerator
- Sterling by Kohler single compartment laundry sink
- Laundry room washer box with hot/cold water
- Dishwasher hookup
- 200-amp electrical service
- Smoke detectors and carbon monoxide detectors
- Decora switches and outlets
- Gas or electric hook-up for dryer and range/oven
- Structured wiring package
- Knockdown drywall texture on interior walls
- Square or rounded corners on interior walls
- Interior painting on ceilings and walls throughout
- Painted MDF or stained poplar trim and interior, 3-hinge doors, variety of styles
- Wood window extension jambs with casing, painted or stained
- Beech stair parts with option of select iron styles
- High-end superior cabinetry, multiple wood species options, variety of door styles with soft-close hinges and dovetail drawers with full extension, soft-close glides
- Tall vanities in all bathrooms
- Select stain and designer paint finishes and select cabinet accessories
- Espire Series quartz/granite countertops in kitchen and all bathrooms (excluding powder room)
- Value line quartz or laminate countertop in laundry room
- Framed mirrors above bathroom vanities (excluding powder room)
- Direct vent gas fireplace with fan, logs, and remote
- Thin-cut stone veneer fireplace face to mantel with flush Bedford stone hearth and wood mantel
- Schlage levers on doors, choice of style and finish
- Cabinet door and drawer hardware allowance

- Towel bar and toilet paper holder in each bathroom
- 5’ sliding clear glass, frameless shower door with black, brushed nickel, or chrome hardware
- Ceramic tile flooring in all bathrooms and laundry room (excluding powder room)
- Ceramic tile shower walls in owner’s bathroom
- Ceramic tile kitchen backsplash allowance
- Select wood floor options per plan
- Carpet allowance
- Light fixture allowance
- Appliance allowance
- Rough and finish cleaning

EXTERIOR BUILDING INCLUSIONS

- Superior exterior design consisting of a combination of shape, texture, and color
- Limited lifetime high-definition shingles
- Continuous ridge vent and enamel baked colored valleys to match shingle color
- Ice and water shield applied on eaves and valleys
- Energy rated insulated fiberglass exterior doors with deadbolts
- Front full view storm door with interchangeable storm/screen door
- 8’ tall triple layer insulated steel overhead garage doors
- Two (2) LiftMaster Premium Series ½ HP AC chain drive openers with two (2) transmitters, keyless entry system, and MyQ technology
- James Hardie Hardieplank climate engineered primed lap siding
- MiraTEC trim, window wraps, and corners
- MiraTEC fascia and plywood soffit
- Exterior caulking
- Exterior painting includes prime and two coats
- Maintenance-free, seamless, aluminum gutters with 4” downspouts
- Thin-cut stone exterior veneer per plan
- Two (2) exterior frost-proof hose bibs
- Two (2) exterior weatherproof GFCI outlets
- Front doorbell



Our NuPath Packages feature some of today's most popular building materials. From high-performance windows to the beauty of quartz and granite countertops, you'll be surprised what's included:

BUILDING INCLUSIONS

- Versatile approach and customization
- Design and 3D architecture
- High-touch service experience
- Skilled team, contractor, and supplier network
- Design consultation and plan customization
- Budget and timeline planning
- Building site consultation
- Focus on Energy Certified New Home
- Form-A-Drain tile footing system with crock and sealed sump pump
- Full 8' high, 8" thick foundation walls with interior brick pattern
- Foundation insulation with stucco coat on the top 12"
- Two (2) vinyl basement windows with area wells connected to drain tile system
- Steel beams and tube columns
- Poured concrete basement floor, garage floor, and front stoop

INTERIOR BUILDING INCLUSIONS

- 95% high efficiency furnace
- Honeywell media air cleaner
- 14 seer high efficiency central air conditioner
- Honeywell T6 Wi-Fi programmable thermostat
- Ventilation for kitchen hood, dryer, and bathrooms
- Water supply lines are CPVC & PEX, drains are PVC
- Power-vented 50 gallon gas water heater system
- Rough-in ¾ bath in basement for future bathroom

- 2"x6", 16" O.C. exterior wall framing with OSB sheathing
- 2"x6", 16" O.C. exterior garage wall framing with OSB sheathing
- Tyvek house wrap on exterior house and garage walls to prevent air and water penetration
- Flex wrap on all windows and door sills to prevent air infiltration and sill rot
- Engineered I-Joist floor system with T&G high performance floor sheathing, nailed and glued
- Engineered roof trusses, 24" O.C. with OSB sheathing
- R-19 batt insulation in walls
- 2" closed cell foam at all box sills
- R-50 blown in attic insulation
- Vinyl high-performance single hung windows and patio doors with drywall jambs and wood sill

- NuPath Series Kohler plumbing fixtures, pressure balanced, faucets (select styles and finishes)
- Oasis acrylic tub and shower modules
- Kohler drop-in oval or rectangle vitreous china sinks in bathrooms
- Kohler comfort height elongated toilets
- Sterling by Kohler stainless steel sink in kitchen with Kohler brushed black, brushed nickel, or chrome faucets (select styles)

INTERIOR BUILDING INCLUSIONS CONTINUED

- Kohler pedestal sink in powder room with wide spread black, brushed nickel, or chrome faucet (select styles)
- Garbage disposal with air switch
- Water/ice maker line to refrigerator
- Laundry room washer box with hot/cold water
- Dishwasher hookup
- 200-amp electrical service
- Smoke detectors and carbon monoxide detectors
- Gas or electric hook-up for dryer and oven
- Structured wiring package
- Knockdown drywall texture on interior walls
- Square or rounded corners on interior walls
- Interior painting on ceilings and walls throughout
- Painted MDF or stained poplar trim and interior doors, variety of styles
- Stained or painted wood sills with drywall return window jambs
- ½ walls with wood cap at stairs, if applicable
- Quality cabinetry in a variety of species and door styles with soft-close hinges and dovetail drawers with full extension, soft-close glides
- Tall vanities in all bathrooms
- Select stain and designer paint finishes and select cabinet accessories
- NuPath Series quartz/granite countertops at kitchen
- High-definition laminate countertops at laundry room and all bathrooms except powder room
- Framed mirrors above bathroom vanities (excluding powder bathroom)
- Direct vent gas fireplace with fan and logs
- Thin-cut stone veneer fireplace face to mantel with flush Bedford stone hearth and wood mantel
- Schlage levers on doors, choice of style and finish
- Cabinet door and drawer hardware allowance
- Towel bar and toilet paper holder in each bathroom
- 5' sliding clear glass shower door with black, brushed nickel, or chrome frame and hardware

- Spacesaver over the range microwave – Stainless Steel Allowance
- Hidden control dishwasher – Stainless Steel Allowance
- NuPath Series of select luxury vinyl plank or non-grouted luxury vinyl tile flooring per plan
- Carpet allowance
- Light fixture allowance
- Rough and finish cleaning

EXTERIOR BUILDING INCLUSIONS

- Superior exterior design consisting of a combination of shape, texture, and color
- Limited lifetime high-definition shingles
- Continuous ridge vent and enamel baked colored valleys to match shingle color
- Ice and water shield applied on eaves and valleys
- Energy rated insulated fiberglass exterior doors with deadbolts
- 8' tall triple layer insulated steel overhead garage doors
- Two (2) LiftMaster Premium Series ½ HP AC chain drive openers with two (2) transmitters, keyless entry system, and MyQ technology
- James Hardie Hardieplank climate engineered primed lap siding
- MiraTEC trim, window wraps, and corners
- MiraTEC fascia and plywood soffit
- Exterior caulking
- Exterior painting includes prime and two coats
- Maintenance free, seamless, aluminum gutters with 4" downspouts
- Thin-cut stone veneer per plan
- Two (2) exterior frost-proof hose bibs
- Two (2) exterior weatherproof GFCI outlets
- Front doorbell



THE SORREL

TWO-STORY DESIGN

COZY
TWO-STORY
HOME

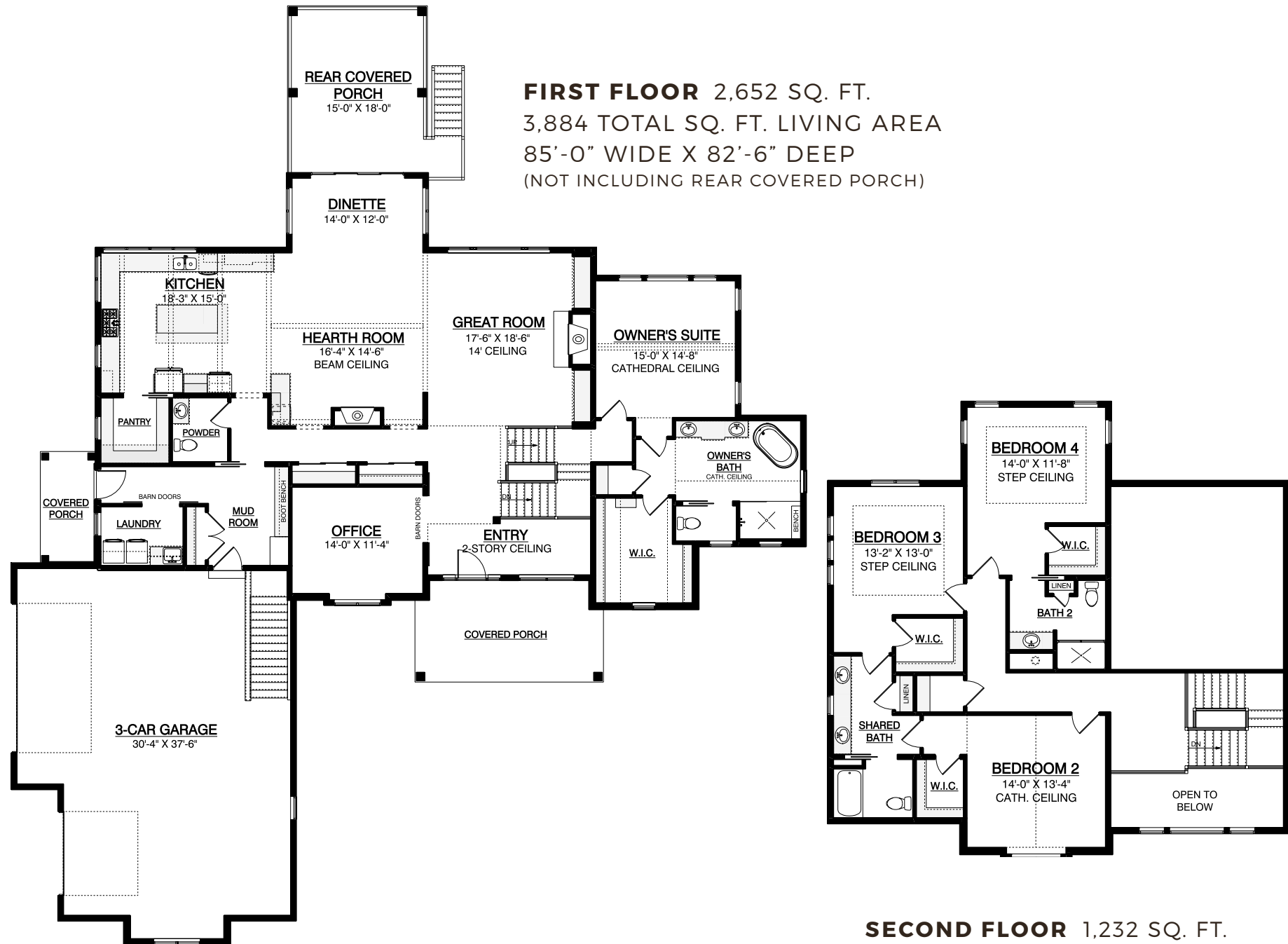
3,884 SQ. FT.

4 BEDROOMS

3.5 BATHS

ELEVATED
OWNER'S SUITE

A two-story home uniquely built for comfortable living featuring three porches, an elevated, truly private owner's suite, and a relaxing hearth room with a stately fireplace.





THE SEQUOIA

TWO-STORY DESIGN

2022
PARADE
OF HOMES
MODEL

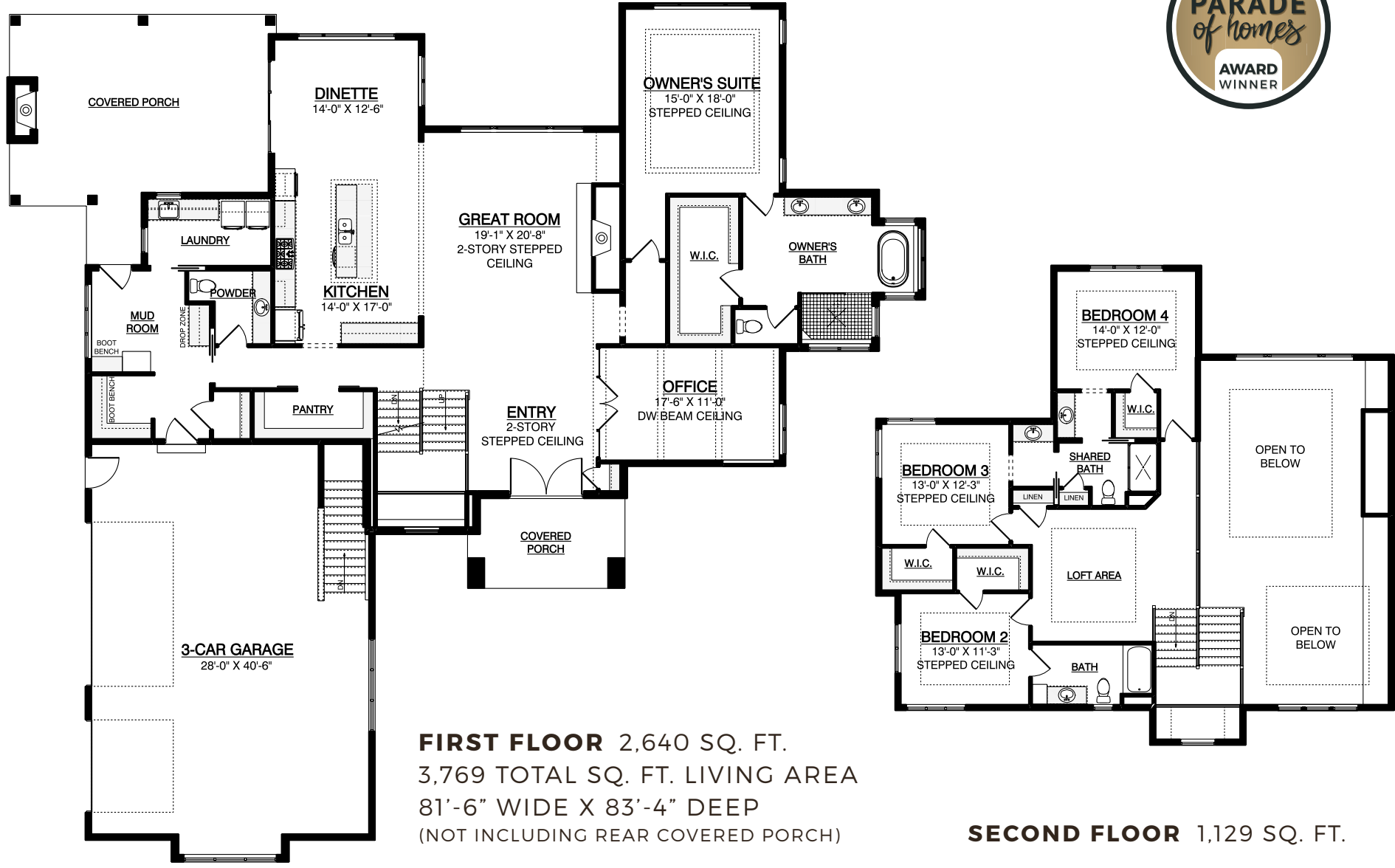
3,769 SQ. FT.

4 BEDROOMS

3.5 BATHS

SUSPENDED
STAIRCASE

A distinctive two-story home that artfully combines clean, modern design with the warmth of a family living space. The exterior makes an impression with its striking geometric features, including stone columns and black-trimmed windows.





THE HAWTHORNE

TWO-STORY DESIGN

EXQUISITE
FAMILY
RETREAT

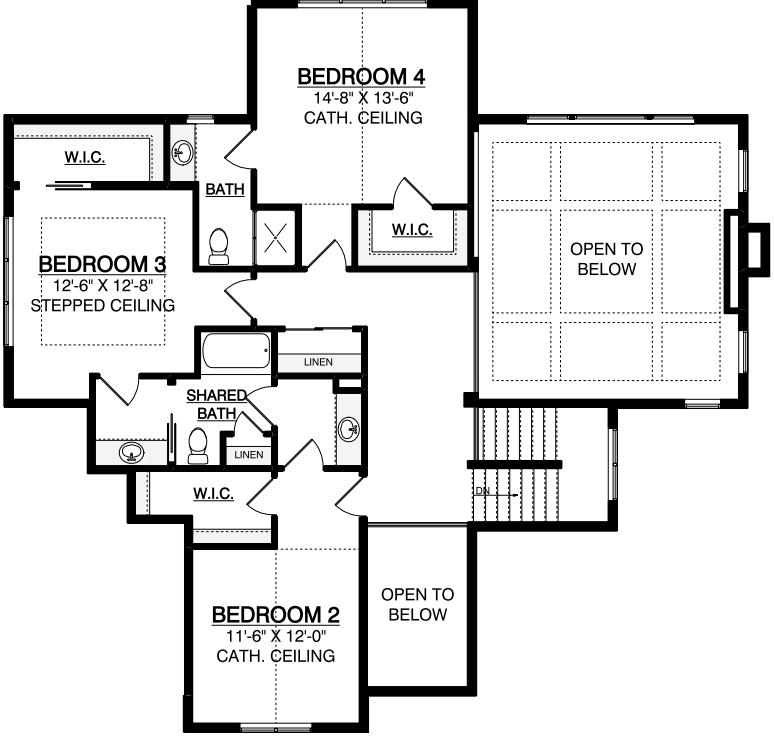
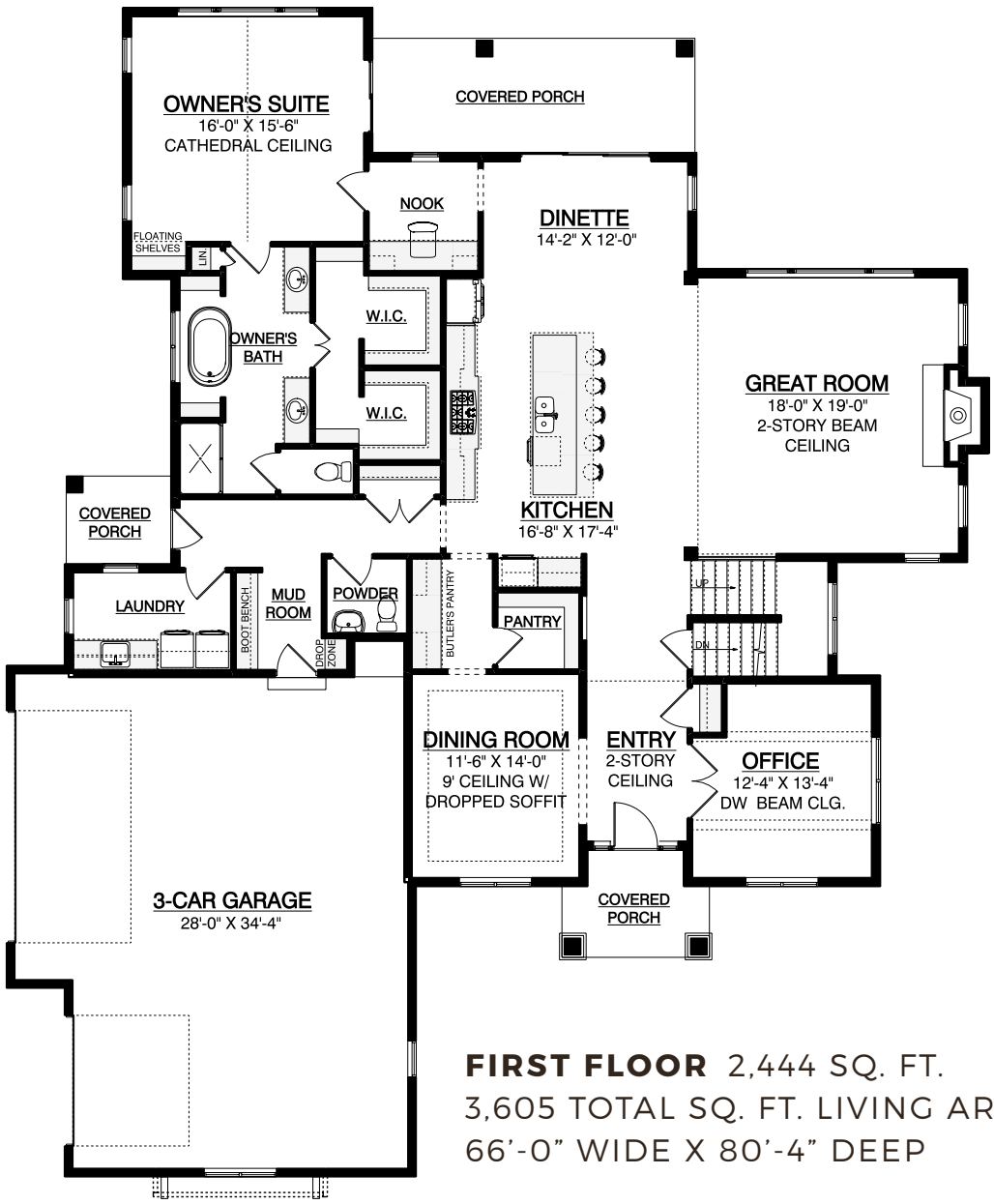
3,605 SQ. FT.

4 BEDROOMS

3.5 BATHS

THREE COVERED
PORCHES

This spacious family home features a second-floor loft that overlooks the first floor's open-concept great room. The cathedral ceilings give the interior an elegant touch, while the three covered porches add character to the home's exterior.





THE MADRONO III

TWO-STORY DESIGN

**TWO-STORY
FAMILY
HOME**

3,444 SQ. FT.

4 BEDROOMS

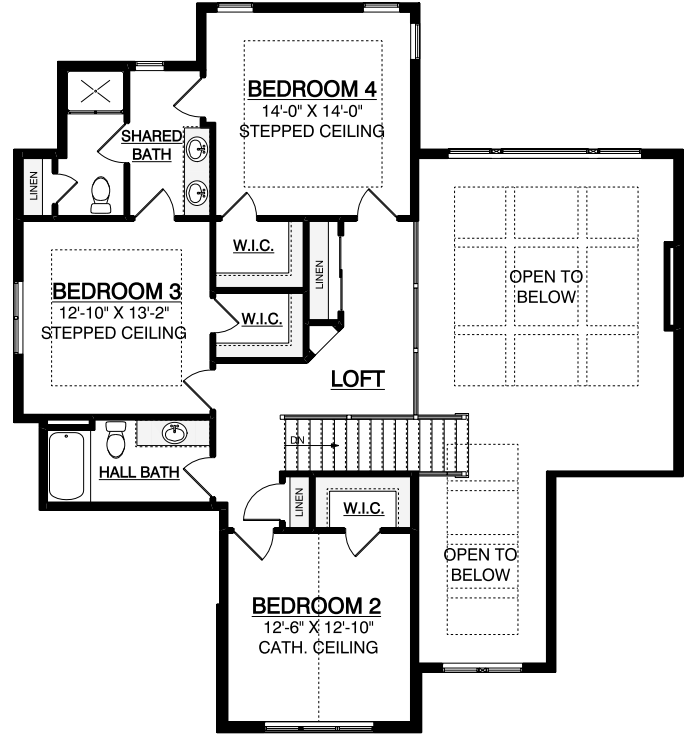
3.5 BATHS

**PRIVATE
OWNER'S SUITE**

This roomy floor plan offers the trademark visual appeal of previous Madrono designs while further expanding on their most desirable aspects. Enjoy the large owner's suite, second-floor loft, and beamed ceilings that make this a luxurious and ultra-livable family home.



FIRST FLOOR 2,403 SQ. FT.
3,444 TOTAL SQ. FT. LIVING AREA
73'-4" WIDE X 67'-10" DEEP



SECOND FLOOR 1,041 SQ. FT.





THE MADRONO II

TWO-STORY DESIGN

LUXURIOUS
FAMILY
HOME

3,345 SQ. FT.

4 BEDROOMS

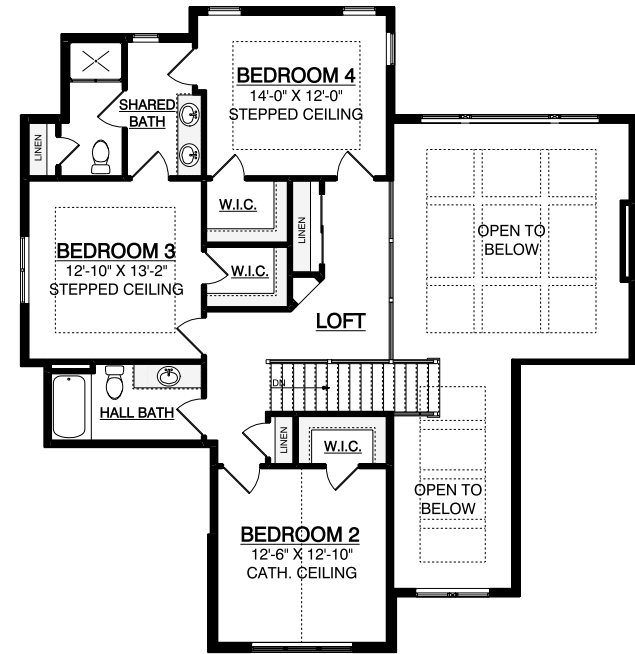
3.5 BATHS

PRIVATE
OWNER'S SUITE

Featuring additional windows for natural light, a larger dinette, and an updated ceiling design, this two-story home takes the luxury, functionality, and serenity of its predecessor and makes it a space the entire family will want to experience.



FIRST FLOOR 2,334 SQ. FT.
3,345 TOTAL SQ. FT. LIVING AREA
75'-4" WIDE X 63'-10" DEEP



SECOND FLOOR 1,011 SQ. FT.





THE MADRONO I

TWO-STORY DESIGN

PAST
PARADE
MODEL

3,345 SQ. FT.

4 BEDROOMS

3.5 BATHS

PRIVATE
OWNER'S SUITE

A luxurious open-concept home that boasts a built-in buffet in the dining room and an oversized kitchen island, making it ideal for entertaining dinner guests. The great room has a two-story beam ceiling, which looks even more impressive from the second-story loft!

ELEVATION A



THE MADRONO I

TWO-STORY DESIGN

OPEN-
CONCEPT
FAMILY
HOME



ELEVATION B

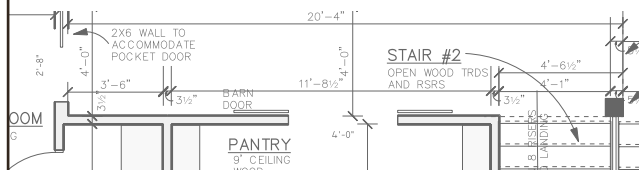


THE MADRONO I

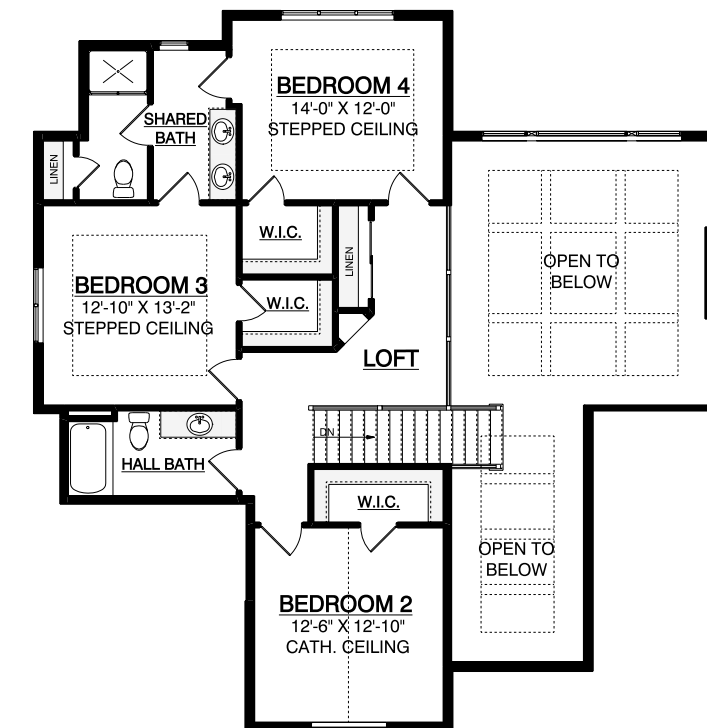
TWO-STORY DESIGN

An ever-evolving *classic*.

One of our most popular homes, The Madrono series of homes is the cross-section of luxury, functionality, and serenity, while each iteration of this floor plan is fit for a different lifestyle.



FIRST FLOOR 2,334 SQ. FT.
3,345 TOTAL SQ. FT. LIVING AREA
75'-4" WIDE X 63'-10" DEEP

**SECOND FLOOR** 1,011 SQ. FT.



THE WHITE OAK

TWO-STORY DESIGN

CHARMING
& TIMELESS
DESIGN

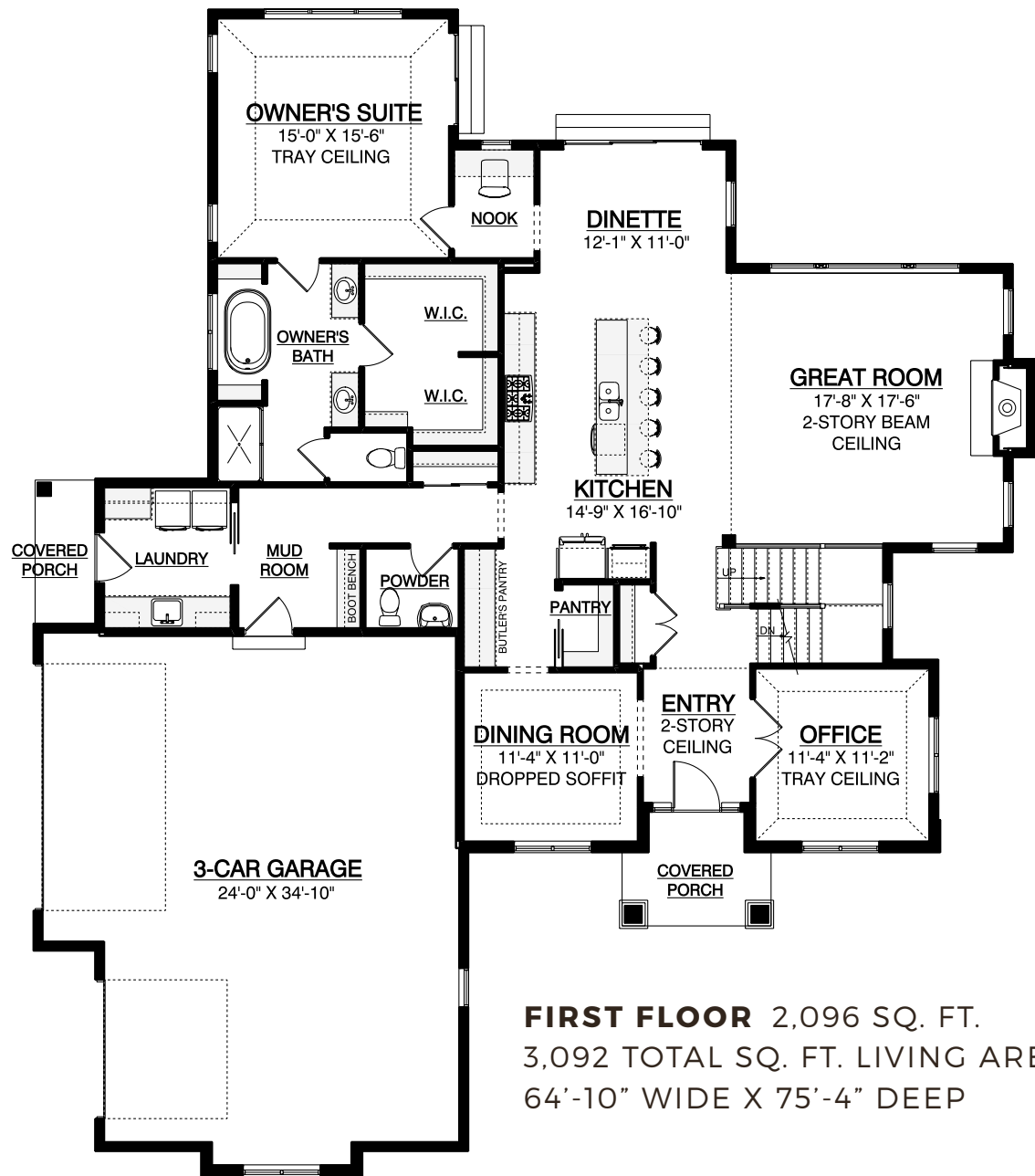
3,092 SQ. FT.

4 BEDROOMS

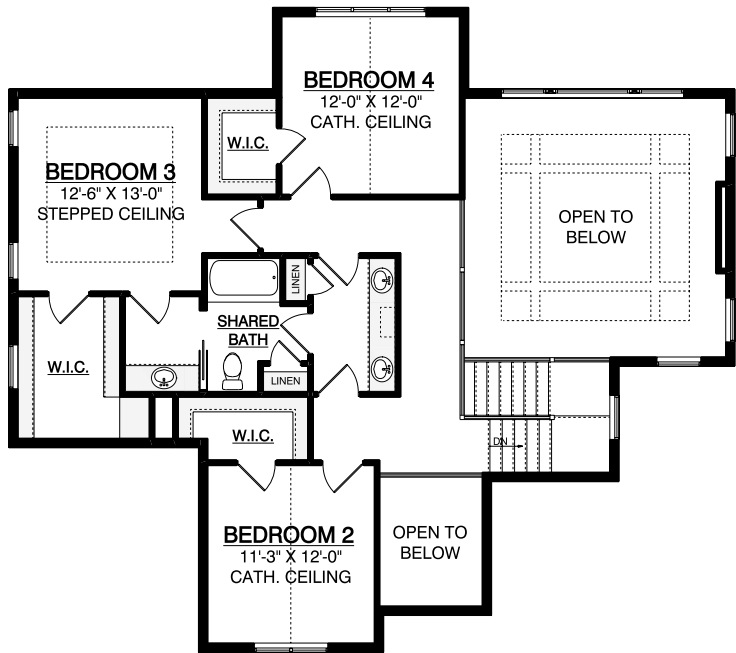
2.5 BATHS

TWO-STORY
GREAT ROOM

A welcoming two-story home that was designed with family in mind. The open layout of the kitchen and dinette is perfect for hosting guests, and the cathedral ceilings in the great room truly expand the space.



FIRST FLOOR 2,096 SQ. FT.
3,092 TOTAL SQ. FT. LIVING AREA
64'-10" WIDE X 75'-4" DEEP



SECOND FLOOR 996 SQ. FT.





THE BIRCH RANCH DESIGN

AWARD-
WINNING
PARADE
MODEL

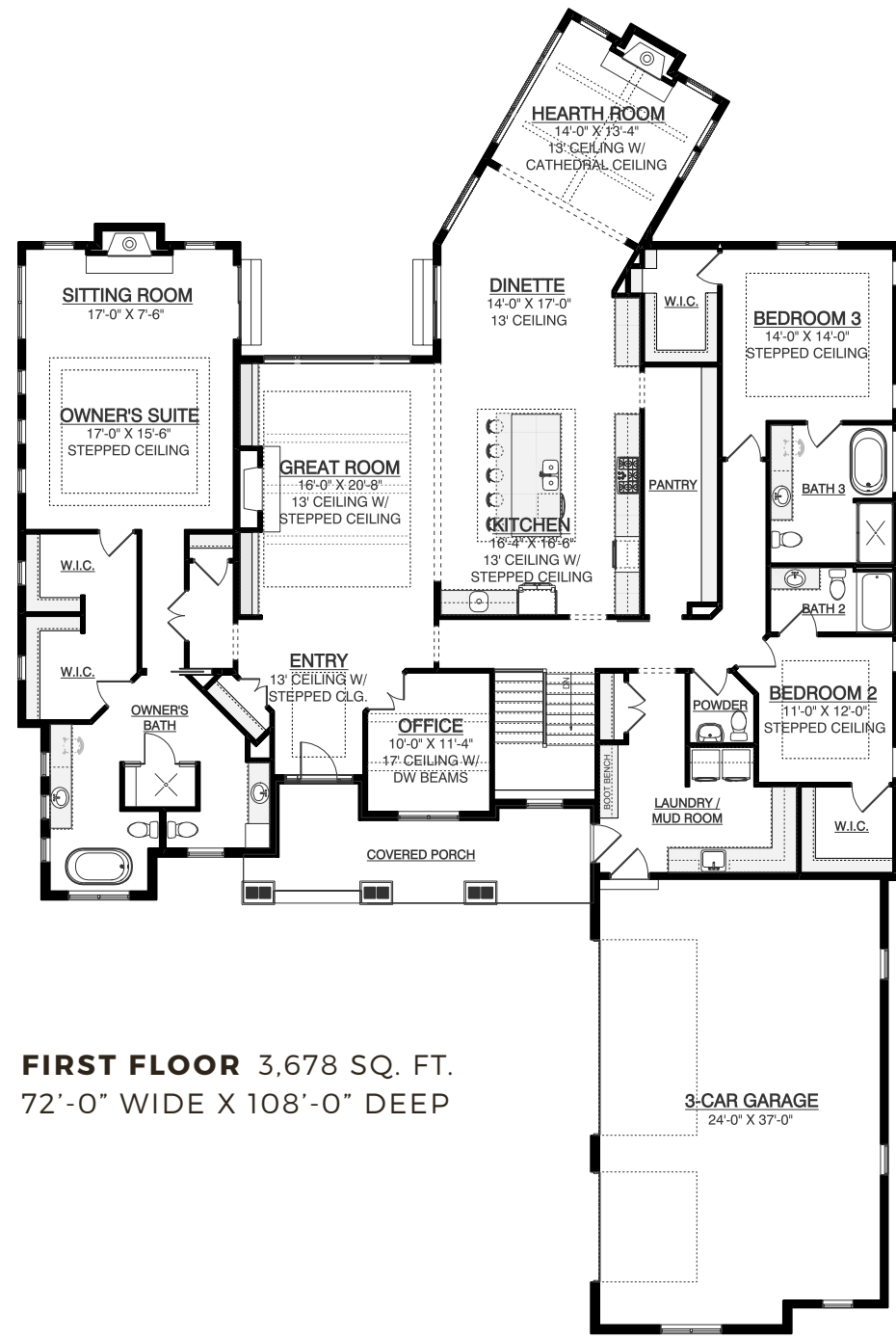
3,678 SQ. FT.

3 BEDROOMS

3.5 BATHS

LUXURIOUS
OWNER'S SUITE

A stunning split-bedroom ranch that makes the most of every room. Soaring cathedral ceilings welcome you into an open, flowing floor plan. You'll love the 13-foot ceilings throughout the main level, and a 17-foot "tower effect" ceiling in the study.



FIRST FLOOR 3,678 SQ. FT.
72'-0" WIDE X 108'-0" DEEP



The modern, *functional* kitchen.

The gourmet kitchen of The Birch is perfect for any inspired cook. Equipped with a large island and walk-in pantry, you'll have plenty of room to store ingredients and prepare your favorite meals.





THE JUNIPER

RANCH DESIGN

AWARD-WINNING
PARADE
MODEL

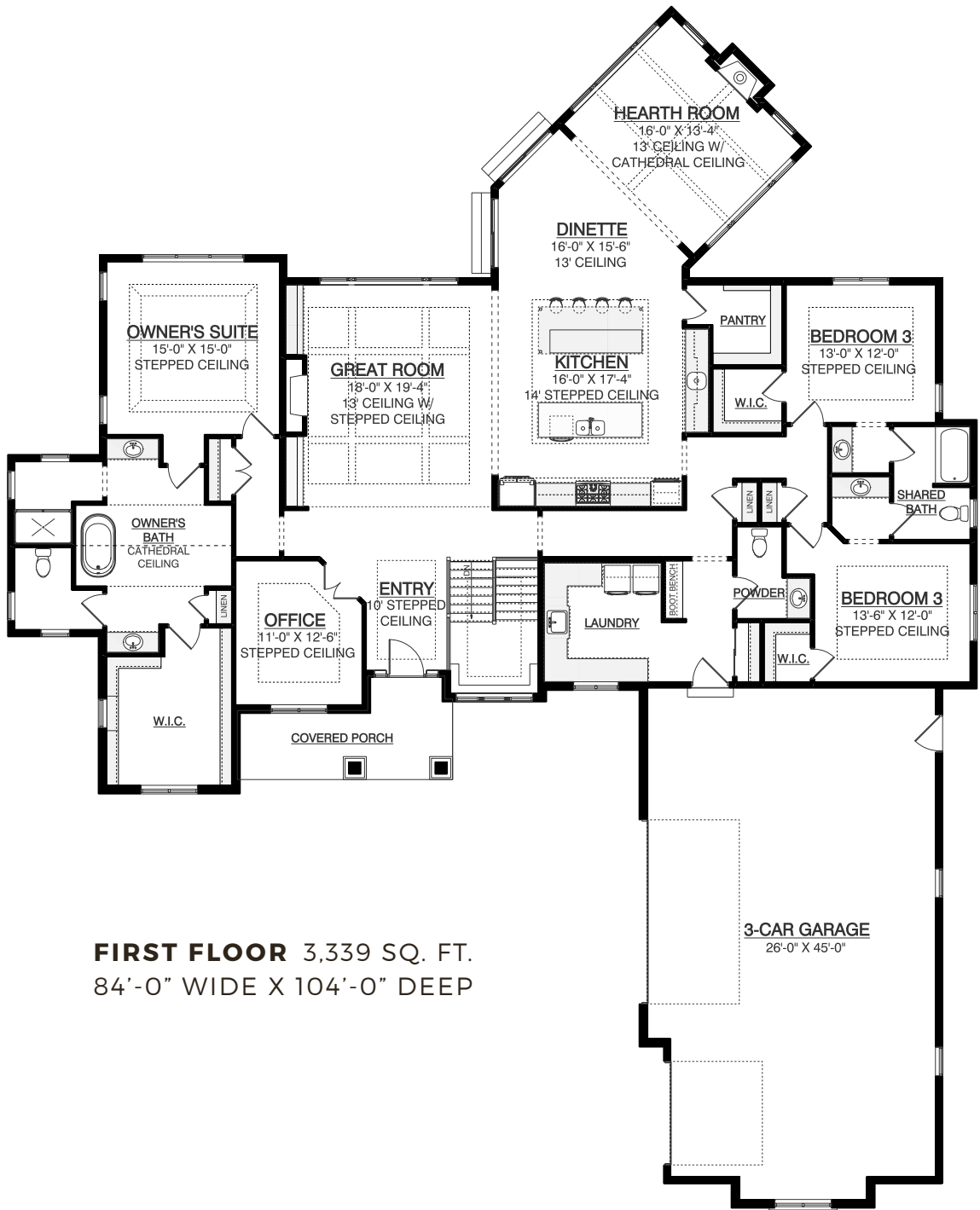
3,339 SQ. FT.

3 BEDROOMS

2.5 BATHS

TOWER EFFECT
STAIRCASE

Designed with flow and functionality in mind, this home showcases a 14' ceiling and expansive windows to bring in tons of natural light. You can look forward to relaxing in the hearth room, which features a wood-planked fireplace.



FIRST FLOOR 3,339 SQ. FT.
84'-0" WIDE X 104'-0" DEEP





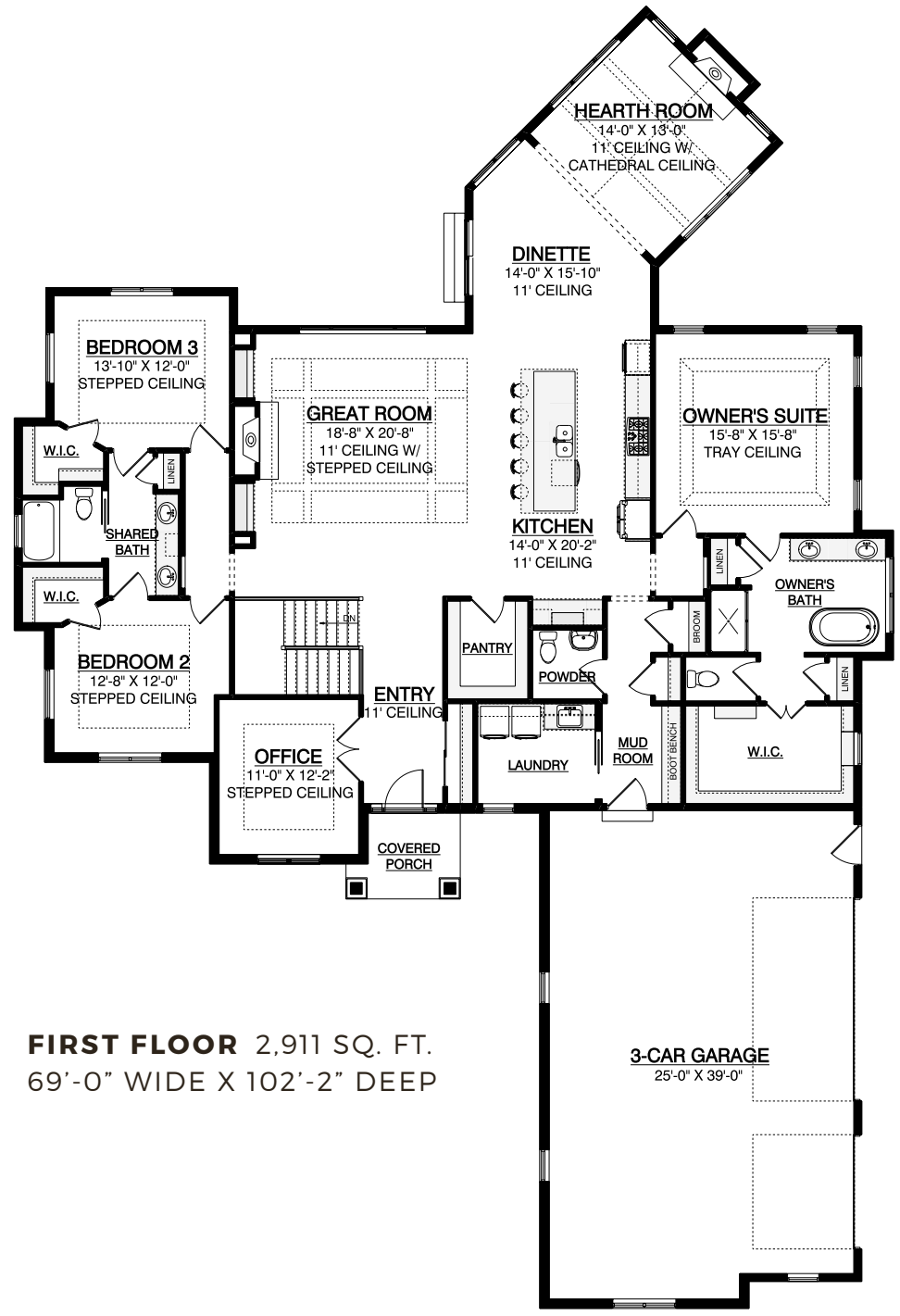
THE FRASER

RANCH DESIGN

BLISSFULLY
OPEN
LAYOUT

- 2,911 SQ. FT.
- 3 BEDROOMS
- 2.5 BATHS
- LUXURIOUS OWNER'S EN-SUITE

An expertly-crafted home with an open layout designed for entertaining family and friends. The charming hearth room has wood-wrapped beams lining the cathedral ceiling, giving the space a regal appearance.



FIRST FLOOR 2,911 SQ. FT.
69'-0" WIDE X 102'-2" DEEP

"We would like to thank you for the wonderful home that you and your team have helped to create for us. This is the third home we have built and the quality and workmanship from the material selections, suppliers and contractors was evident through-out the construction of our home."

- Duane & Leslie



LUXURY EXECUTIVE HOME

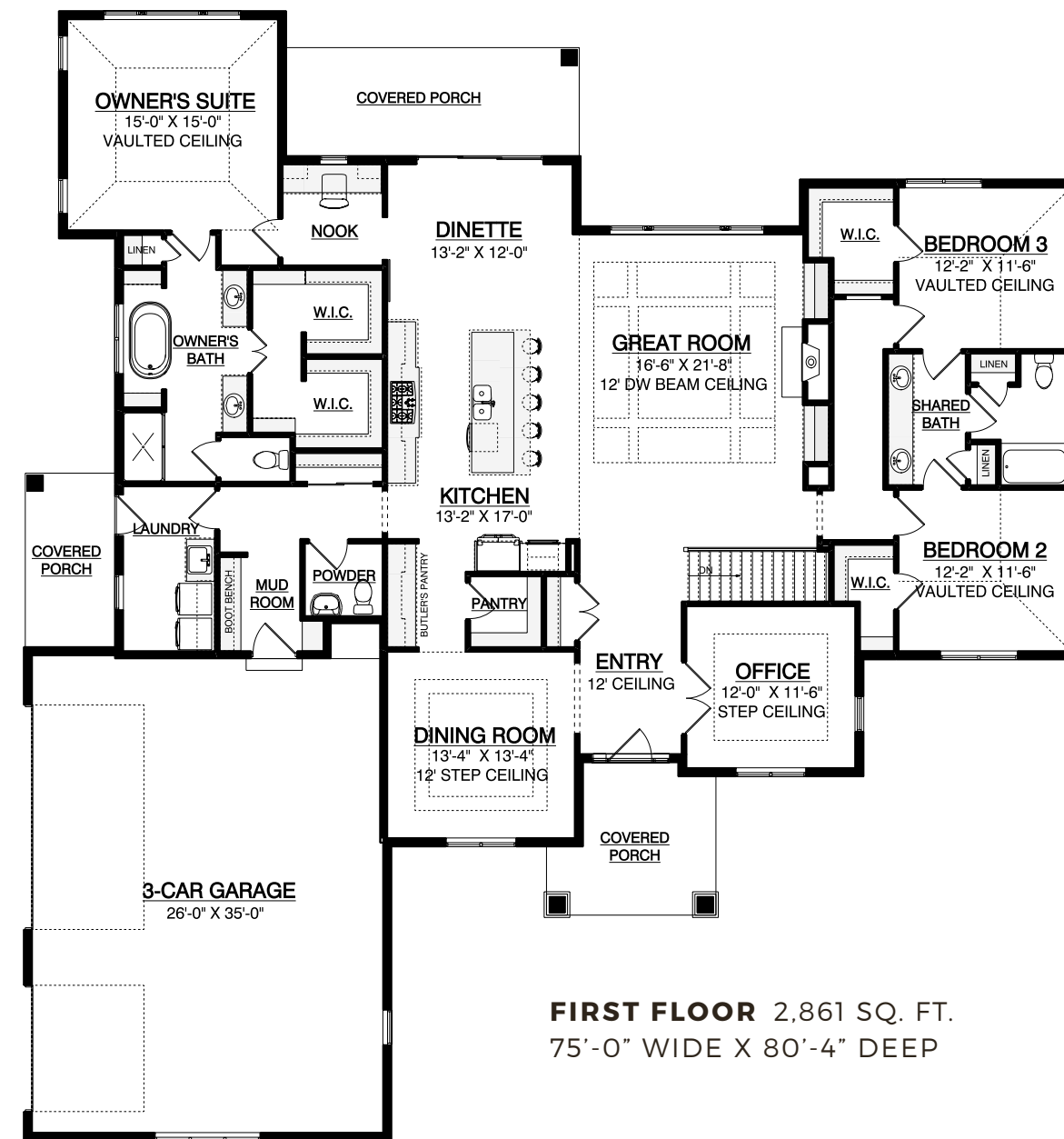
2,861 SQ. FT.

3 BEDROOMS

2.5 BATHS

GOURMET KITCHEN

An executive home with a 12' beamed ceiling in the open-concept great room, giving the space a luxurious and welcoming feeling. With three covered porches, you'll find it easy to relax and get some fresh air with this elegant home.



FIRST FLOOR 2,861 SQ. FT.
75'-0" WIDE X 80'-4" DEEP



THE ACACIA II

RANCH DESIGN

2022
PARADE
OF HOMES
MODEL

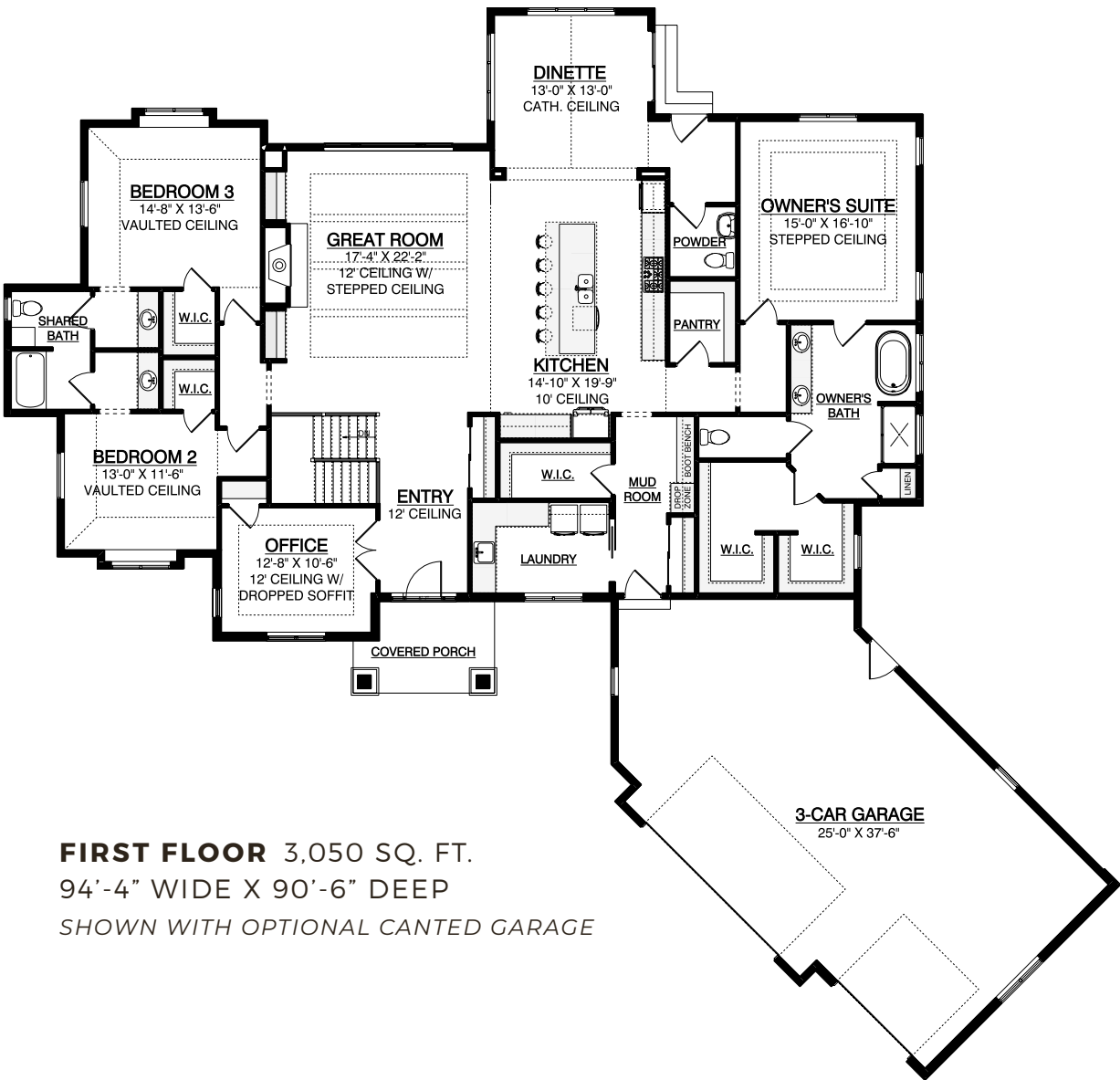
3,050 SQ. FT.

3 BEDROOMS

2.5 BATHS

BONUS
STORAGE

Ideal for the modern family, this ranch-style home updates our original Acacia model by adding more storage space and functionality. The fireplace in the great room is surrounded by a floor-to-ceiling stone hearth, making it the perfect spot to unwind at the end of the day.



Designed for *relaxation*.

The private owner's suite boasts a lofty double-stepped ceiling, expansive walk-in closets, and an en-suite bathroom. The spa-like shower in the bath is a true luxury, providing the ideal relaxation spot.





MODERN LIFESTYLE RANCH

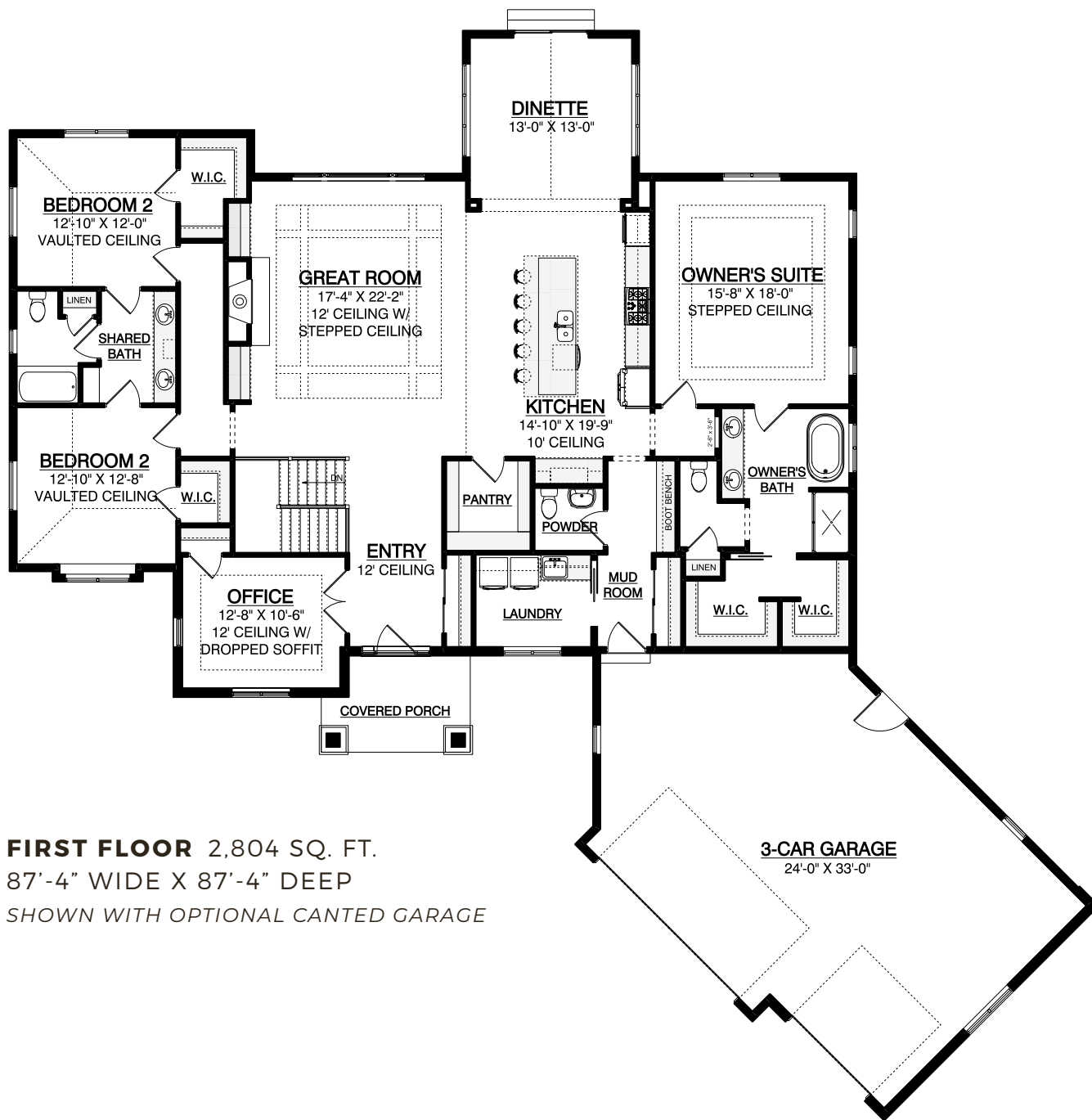
2,804 SQ. FT.

3 BEDROOMS

2.5 BATHS

THREE-SEASON ROOM

A luxurious ranch-style home featuring a stunning 12' beamed ceiling in the open-concept great room. The three-season room is a unique addition to this home, offering the perfect spot to keep houseplants, enjoy the environment, and relax!



FIRST FLOOR 2,804 SQ. FT.
87'-4" WIDE X 87'-4" DEEP
SHOWN WITH OPTIONAL CANTED GARAGE



THE WILLOW RANCH DESIGN

SPACIOUS
MODERN
RANCH

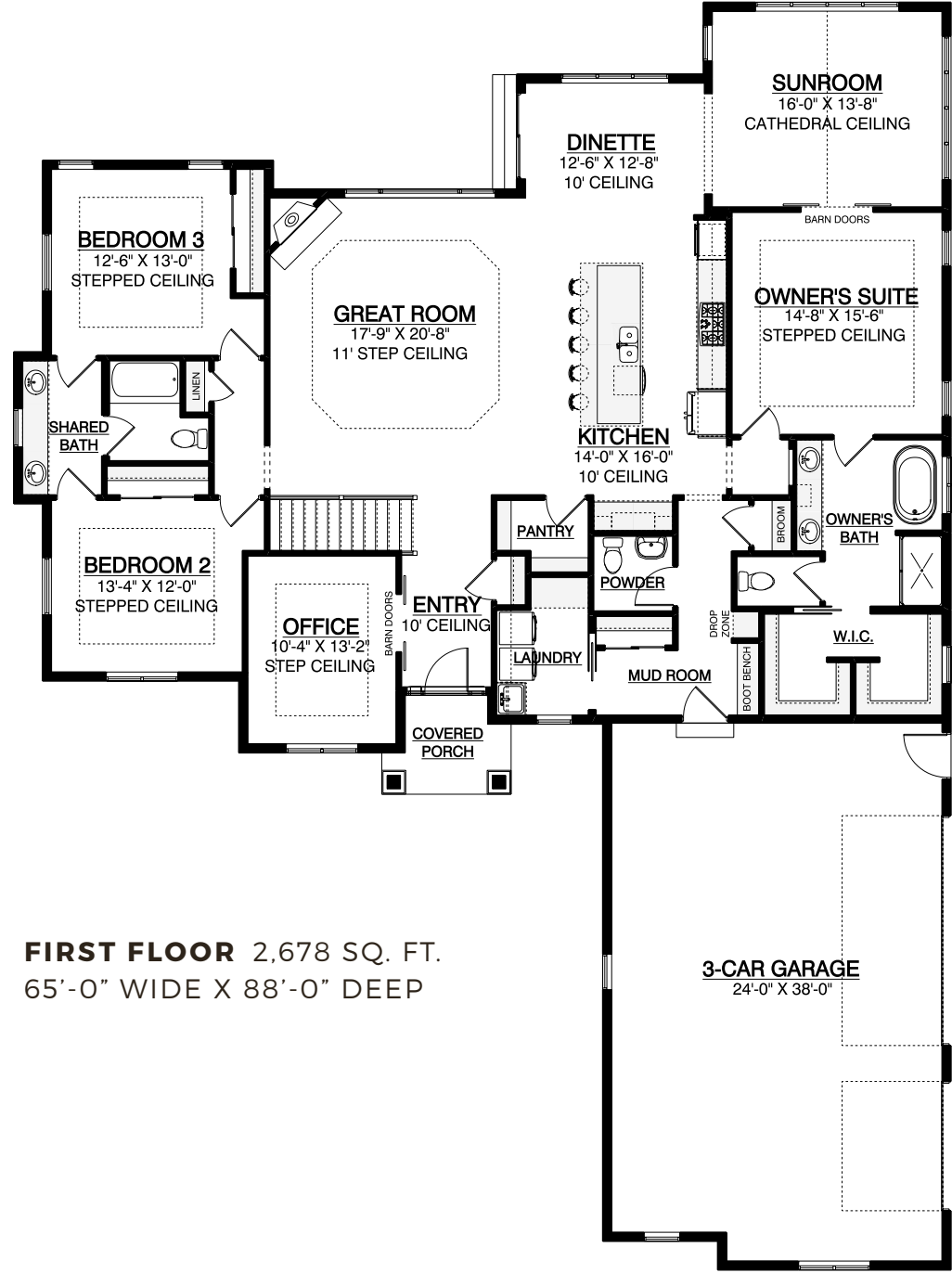
2,678 SQ. FT.

3 BEDROOMS

2.5 BATHS

SUNROOM

This open-concept home has a deluxe owner's suite, boasting divided walk-in closets and a spa-like shower. The owner's bedroom is connected to the sunroom, offering the ideal lounging spot on evenings and weekends.





2023 PARADE OF HOMES MODEL

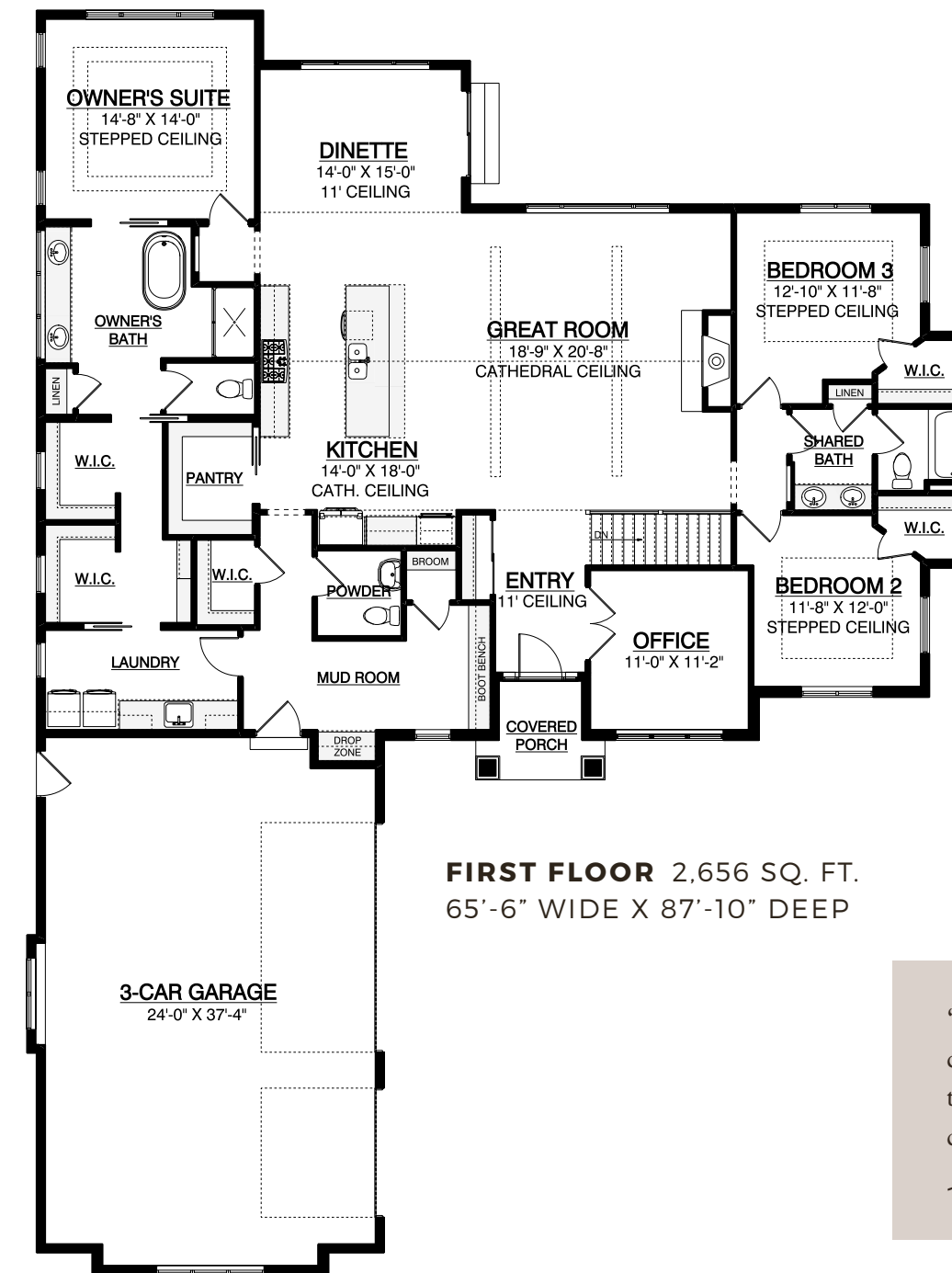
2,656 SQ. FT.

3 BEDROOMS

2.5 BATHS

PREP PANTRY

With a large owner's suite, a wood-mantle fireplace, and an open-concept great room, this luxurious ranch-style home is ready to be made your own! The owner's suite is the ultimate luxury, featuring a private bathroom with a soaking tub, curbless shower, and walk-in closet.



“The professionalism, transparency, and communication of this team is unheard of these days... They built us the home of our dreams that we can’t wait to start a family in.”
- Christine & Greg



AWARD-WINNING PARADE MODEL

6,188 SQ. FT.

6 BEDROOMS

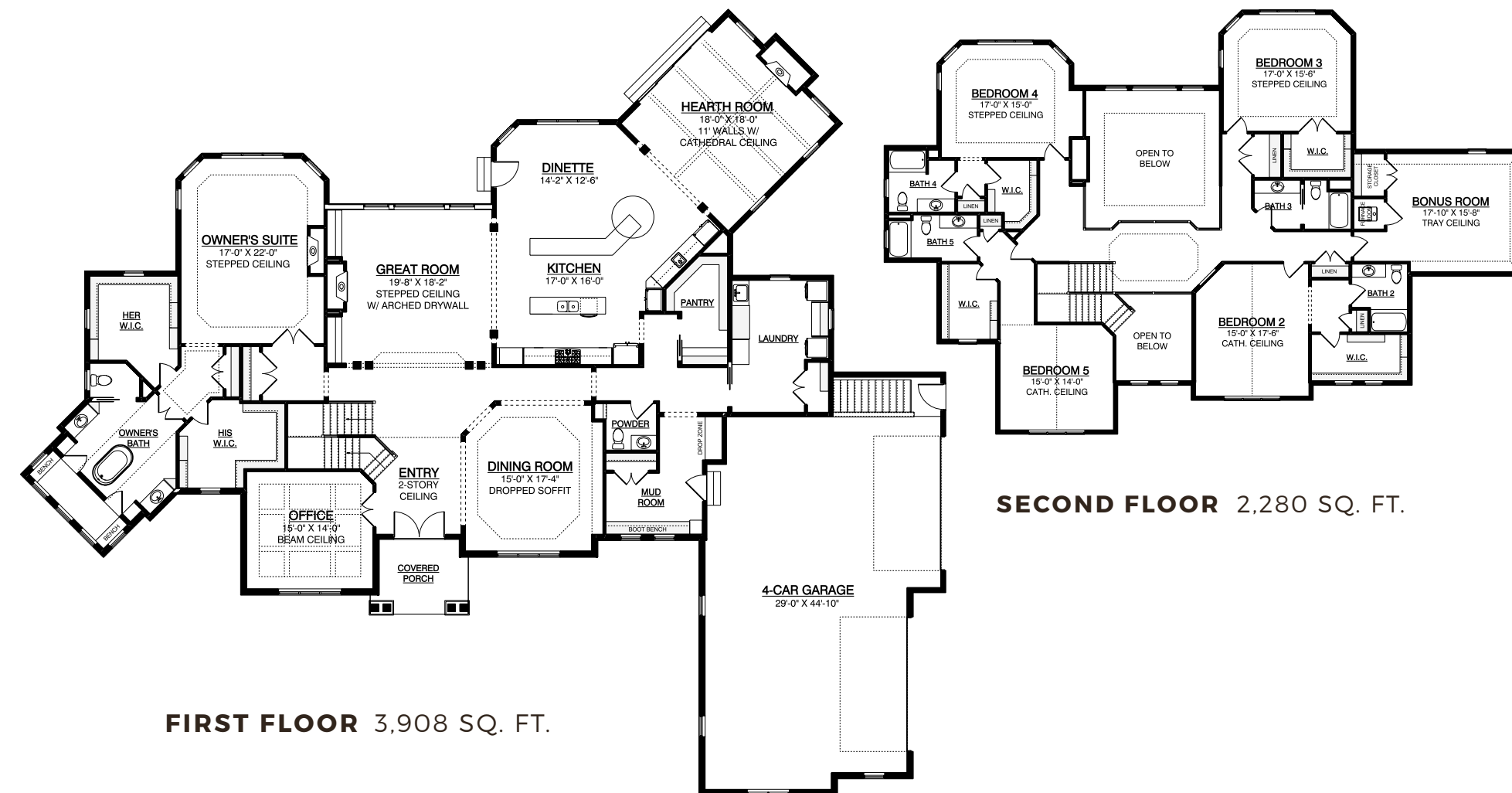
5.5 BATHS

**VEGAS
OWNER'S SUITE**

When it comes to deluxe features, this custom home has everything you need! Whether you're gathering at the oversized snack bar in the kitchen or by one of the four fireplaces this home offers, you'll have plenty of options for entertaining guests!



CUSTOM FLOOR PLAN



FIRST FLOOR 3,908 SQ. FT.

SECOND FLOOR 2,280 SQ. FT.

2023 PARADE
OF HOMES
MODEL

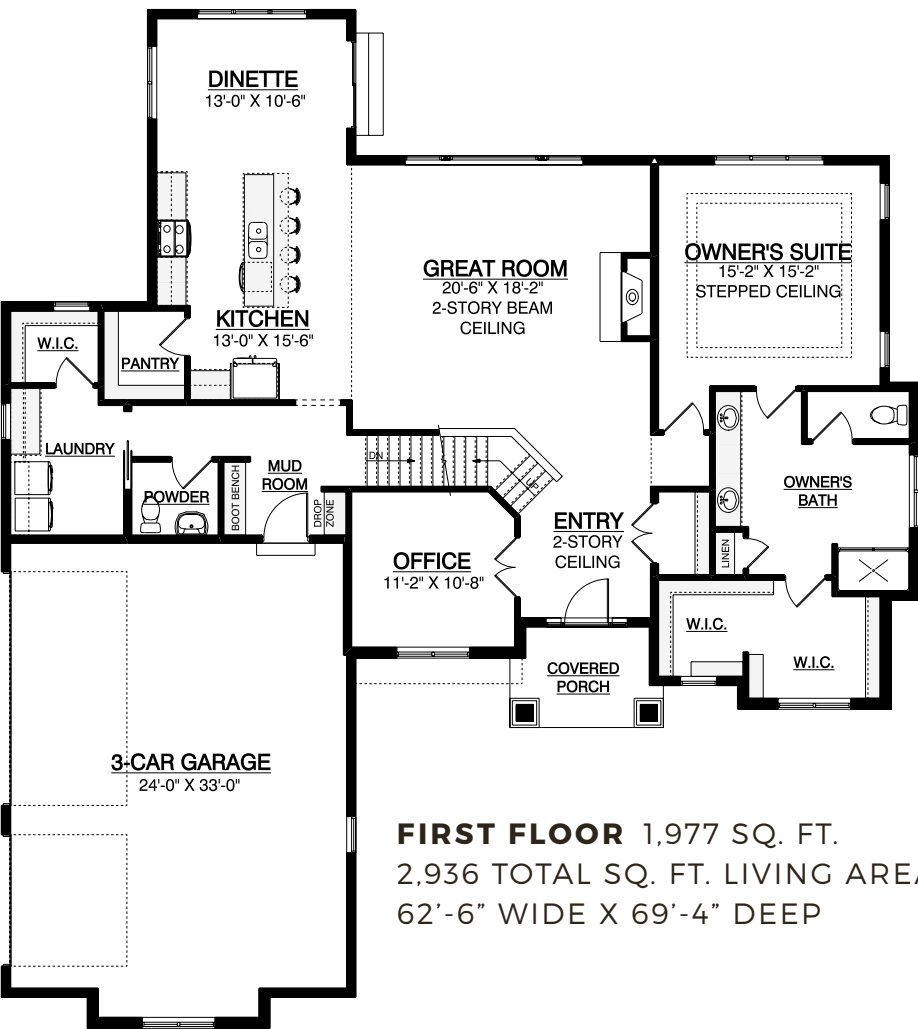
2,936 SQ. FT.

4 BEDROOMS

3.5 BATHS

SPACIOUS
OWNER'S SUITE

This two-story home makes a remarkable first impression with its board and batten siding, cedar brackets, and tastefully-placed stone. Inside, you'll be greeted by a large great room with a 12' ceiling, stone-to-mantel fireplace, and a wall of windows that bring in tons of natural light.



FIRST FLOOR 1,977 SQ. FT.
2,936 TOTAL SQ. FT. LIVING AREA
62'-6" WIDE X 69'-4" DEEP

"Espire not only builds a very good home but are true professionals in how they operate their business."
- Jim



SECOND FLOOR 959 SQ. FT.

THE SILVER MAPLE
TWO-STORY DESIGN

BUILT FOR YOUR
LIFESTYLE

2,870 SQ. FT.

4 BEDROOMS

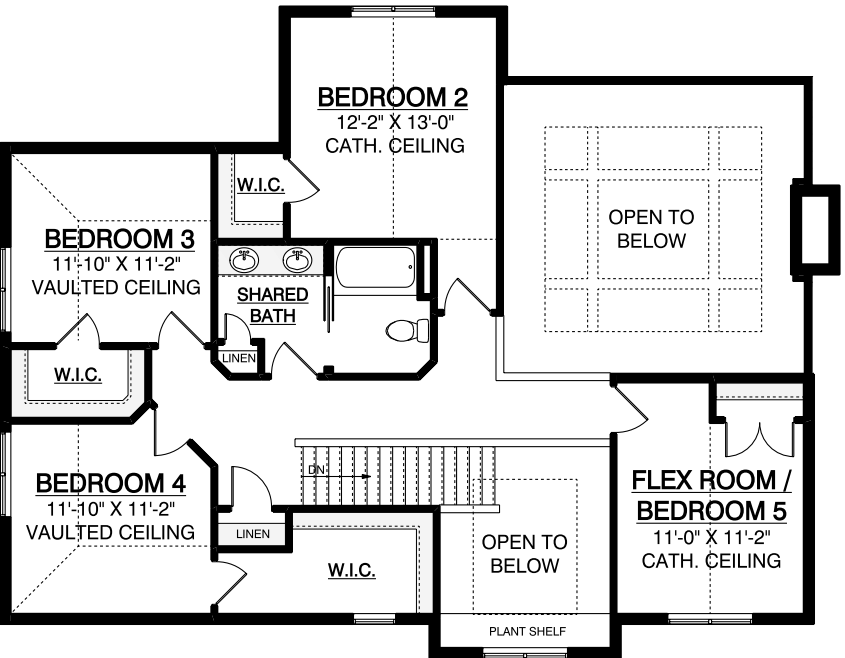
2.5 BATHS

SPACIOUS
KITCHEN

A beautiful family home that makes a great impression upon entry with a stunning two-story foyer. The spacious kitchen features plenty of counter space, while the separate dining room adds to the home's dignified style.



FIRST FLOOR 1,811 SQ. FT.
2,870 TOTAL SQ. FT. LIVING AREA
53'-0" WIDE X 73'-0" DEEP



SECOND FLOOR 1,059 SQ. FT.

THE COTTONWOOD
TWO-STORY DESIGN

AWARD-WINNING
PARADE MODEL

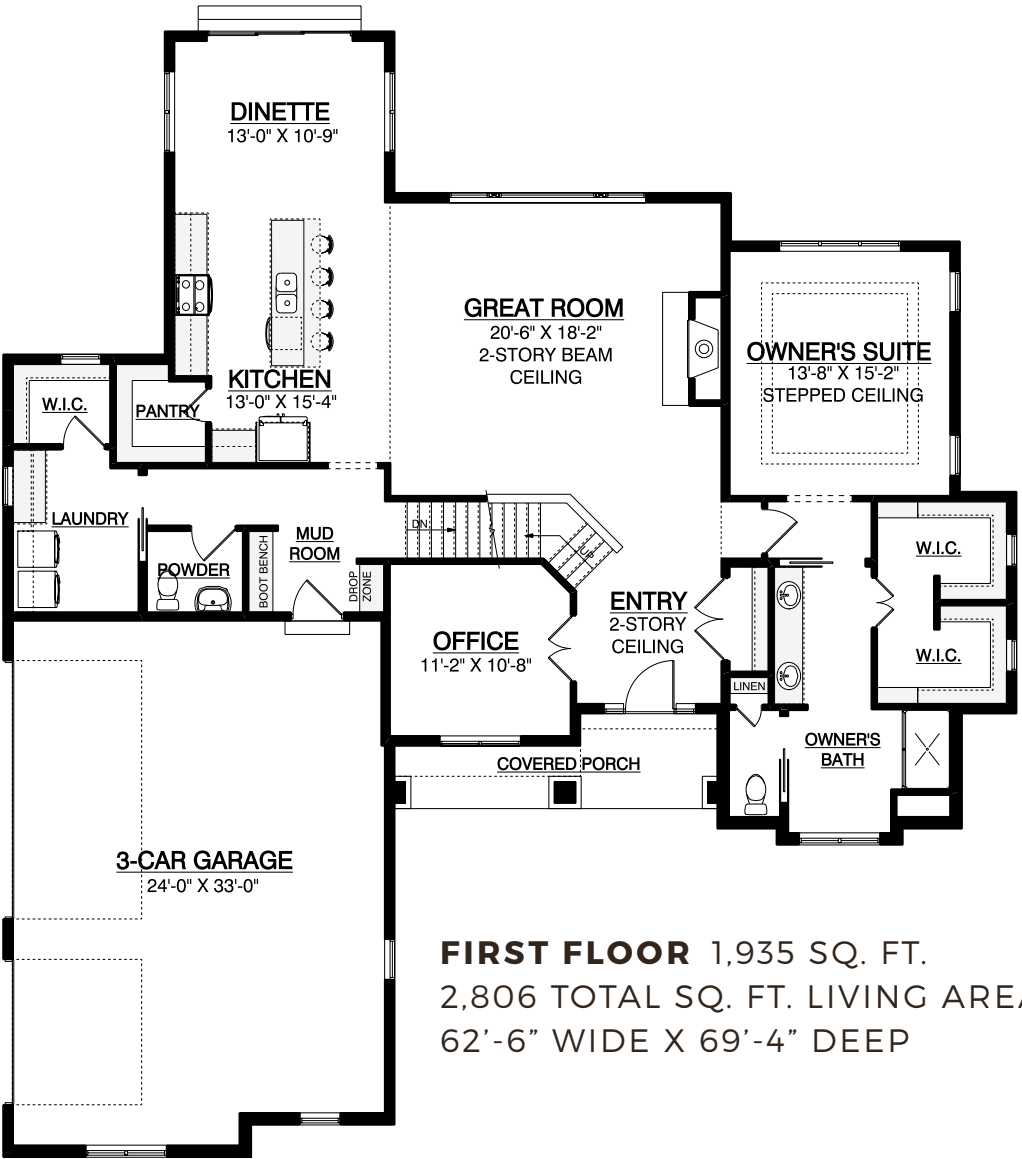
2,806 SQ. FT.

4 BEDROOMS

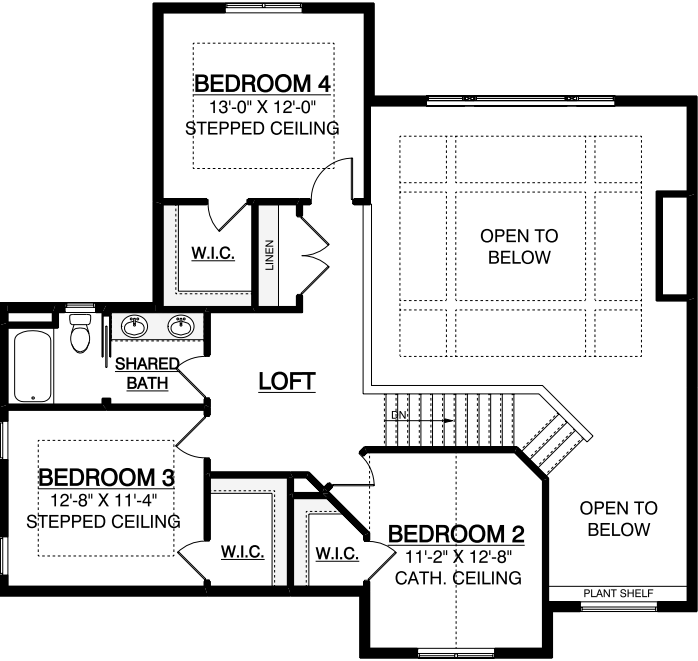
2.5 BATHS

SECOND FLOOR
LOFT

This charming two-story home welcomes you with an open-concept great room that features a beamed ceiling, stone fireplace, and floor-to-ceiling windows to bring natural light throughout the space.



FIRST FLOOR 1,935 SQ. FT.
2,806 TOTAL SQ. FT. LIVING AREA
62'-6" WIDE X 69'-4" DEEP



SECOND FLOOR 871 SQ. FT.



THE SYCAMORE

TWO-STORY DESIGN

VERSATILE &
FUNCTIONAL
FAMILY HOME

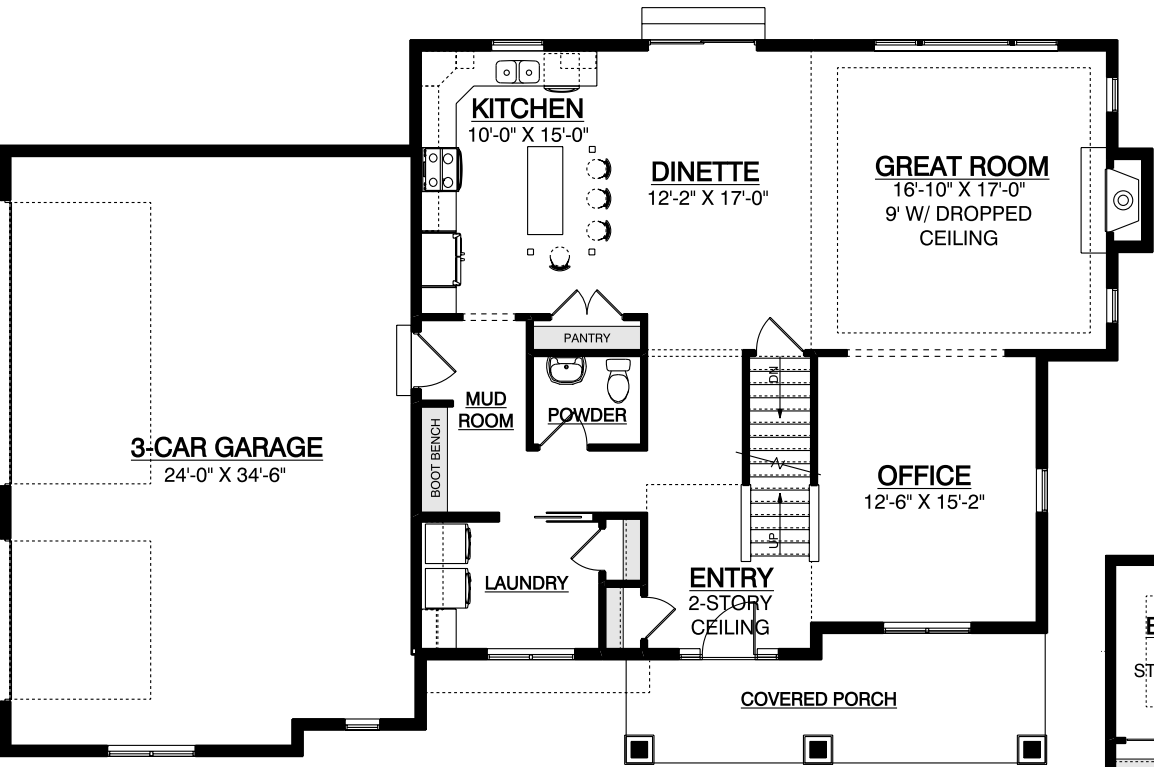
2,534 SQ. FT.

4 BEDROOMS

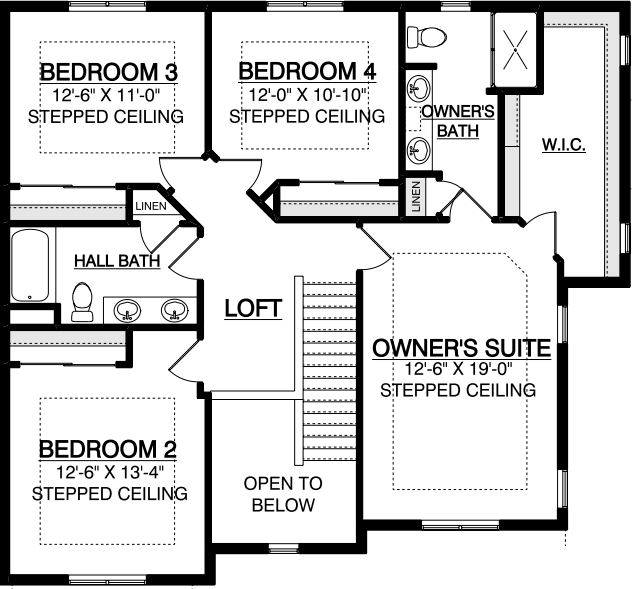
2.5 BATHS

SECOND FLOOR
OWNER'S SUITE

Functionality and elegant design come together in this gorgeous family home. The open-concept great room features a fireplace and leads into the dinette and kitchen, forming the perfect place for entertaining guests.



FIRST FLOOR 1,313 SQ. FT.
2,534 TOTAL SQ. FT. LIVING AREA
65'-4" WIDE X 40'-6" DEEP



SECOND FLOOR 1,221 SQ. FT.

THE HEMLOCK

TWO-STORY DESIGN

DELIGHTFUL,
OPEN LAYOUT
CONCEPT

2,508 SQ. FT.

4 BEDROOMS

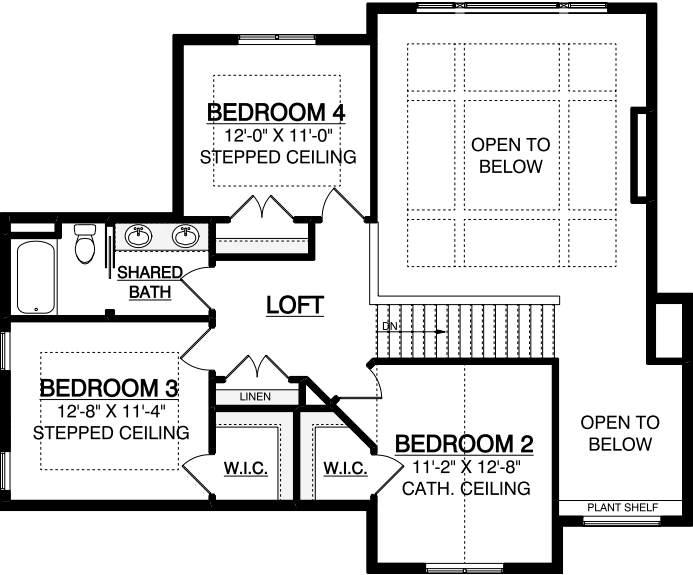
2.5 BATHS

TWO-STORY
ENTRYWAY

A charming home that makes functionality a priority. The second story loft overlooks the massive great room, which features high-end finishes such as a stone mantle fireplace and a two-story beam ceiling.



FIRST FLOOR 1,758 SQ. FT.
2,508 TOTAL SQ. FT. LIVING AREA
57'-6" WIDE X 59'-4" DEEP



SECOND FLOOR 750 SQ. FT.

2022 PARADE OF HOMES MODEL

3 BEDROOMS

2.5 BATHS

TUCK-AWAY KITCHEN

Building off the functionality of our popular Hickory design, this charming family home offers additional square footage and a home office! The cathedral ceilings in the great room and owner's bedroom are sure to leave a lasting impression.



FIRST FLOOR 2,569 SQ. FT.
77'-4" WIDE X 75'-2" DEEP
SHOWN WITH OPTIONAL CANTED GARAGE

NUPATH
HOMES

THE JASMINE
RANCH DESIGN

**SPACIOUS,
OPEN-CONCEPT
FLOOR PLAN**

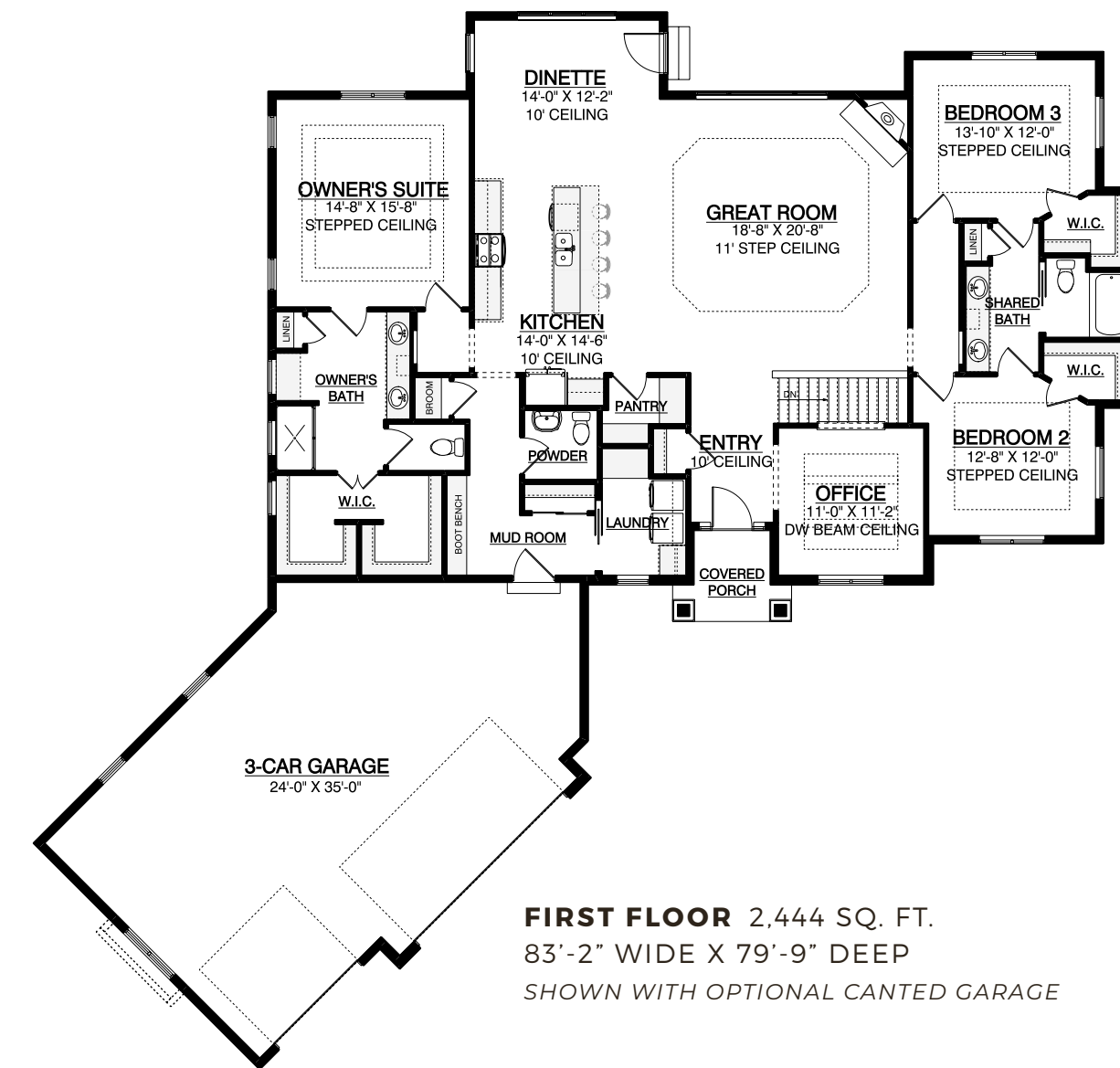
2,444 SQ. FT.

3 BEDROOMS

2.5 BATHS

CANTED GARAGE

Focused on open-concept living, this ranch-style home expertly balances functionality and flow. The great room boasts an 11' step ceiling and fireplace, a perfect spot to wind down at the end of the day.



FIRST FLOOR 2,444 SQ. FT.
83'-2" WIDE X 79'-9" DEEP
SHOWN WITH OPTIONAL CANTED GARAGE



A home with *functional* flow.

The expertly-designed flow of this model makes it clear why it's one of our most popular homes! The Jack and Jill layout of the bathroom perfectly showcases this by providing a functional and spacious area.



THE CYPRESS II

RANCH DESIGN

FUNCTIONAL
OPEN RANCH

2,383 SQ. FT.

3 BEDROOMS

2.5 BATHS

SPACIOUS
OWNER'S SUITE

Improving upon The Cypress I by adding even more space, this ranch-style home is equipped to fit your family's needs! Enjoy the large owner's suite, featuring a private bathroom with a double vanity and walk-in closet.



"The process has been so easy from start to finish. What they have created here is unbelievable. Espire does a fabulous job of leading you through the process."
- Karen & Bill

THE CYPRESS I RANCH DESIGN

PRACTICAL,
OPEN-CONCEPT
RANCH

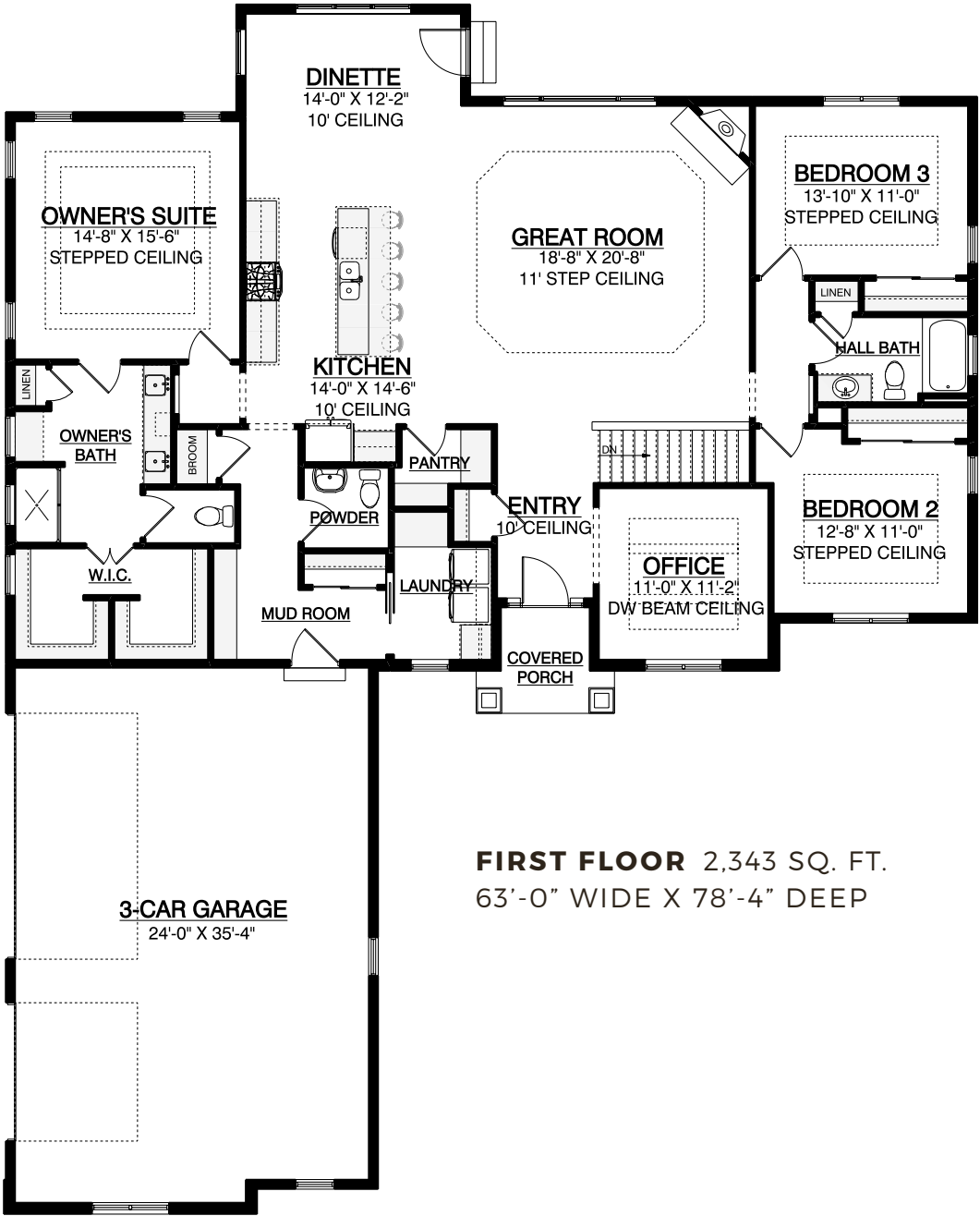
2,343 SQ. FT.

3 BEDROOMS

2.5 BATHS

SPACIOUS
OWNER'S SUITE

Designed with the modern family in mind, this ranch-style home limits hallways in order to expand the space of each room. The mud room contains a built-in boot bench and drop zone, expanding your storage space to make organization easy!



NUPATH
HOMES

THE HICKORY
RANCH DESIGN

AWARD-WINNING PARADE MODEL

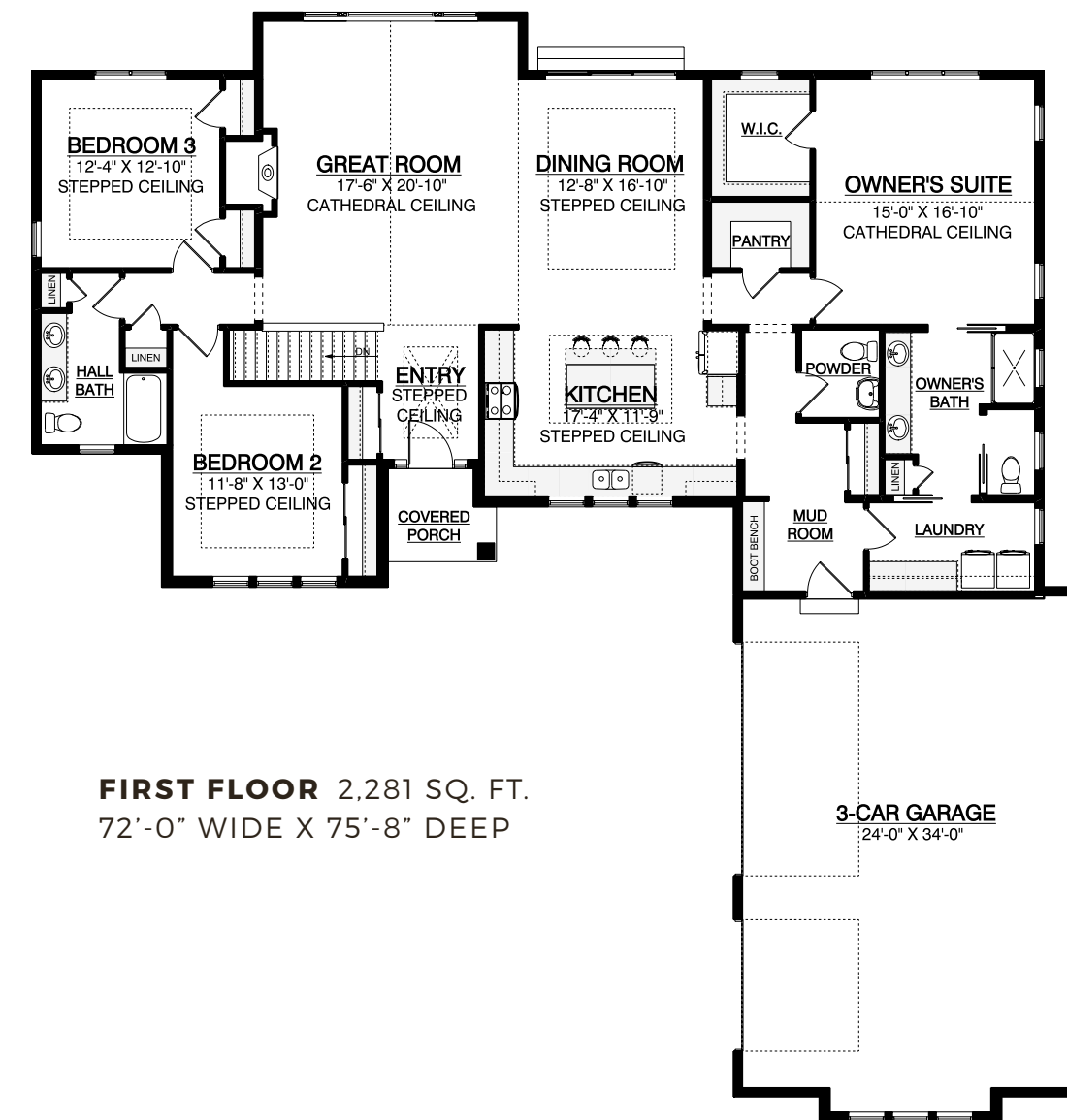
2,281 SQ. FT.

3 BEDROOMS

2.5 BATHS

TUCK-AWAY KITCHEN

In order to suit the needs of the contemporary family, this home uses an open layout to maximize functionality. The large great room flows seamlessly into the dining room and kitchen, which boasts ample counter space and a stylish cooking island.



FIRST FLOOR 2,281 SQ. FT.
72'-0" WIDE X 75'-8" DEEP

3-CAR GARAGE
24'-0" X 34'-0"



Your cozy new cooking space.

This large kitchen is tucked away at the front of the house, allowing you to enjoy some privacy while trying out recipes. Ample cabinets and counter space also help make this kitchen ideal for any cook!



THE PINE RIDGE II RANCH DESIGN

2023 PARADE
OF HOMES
MODEL

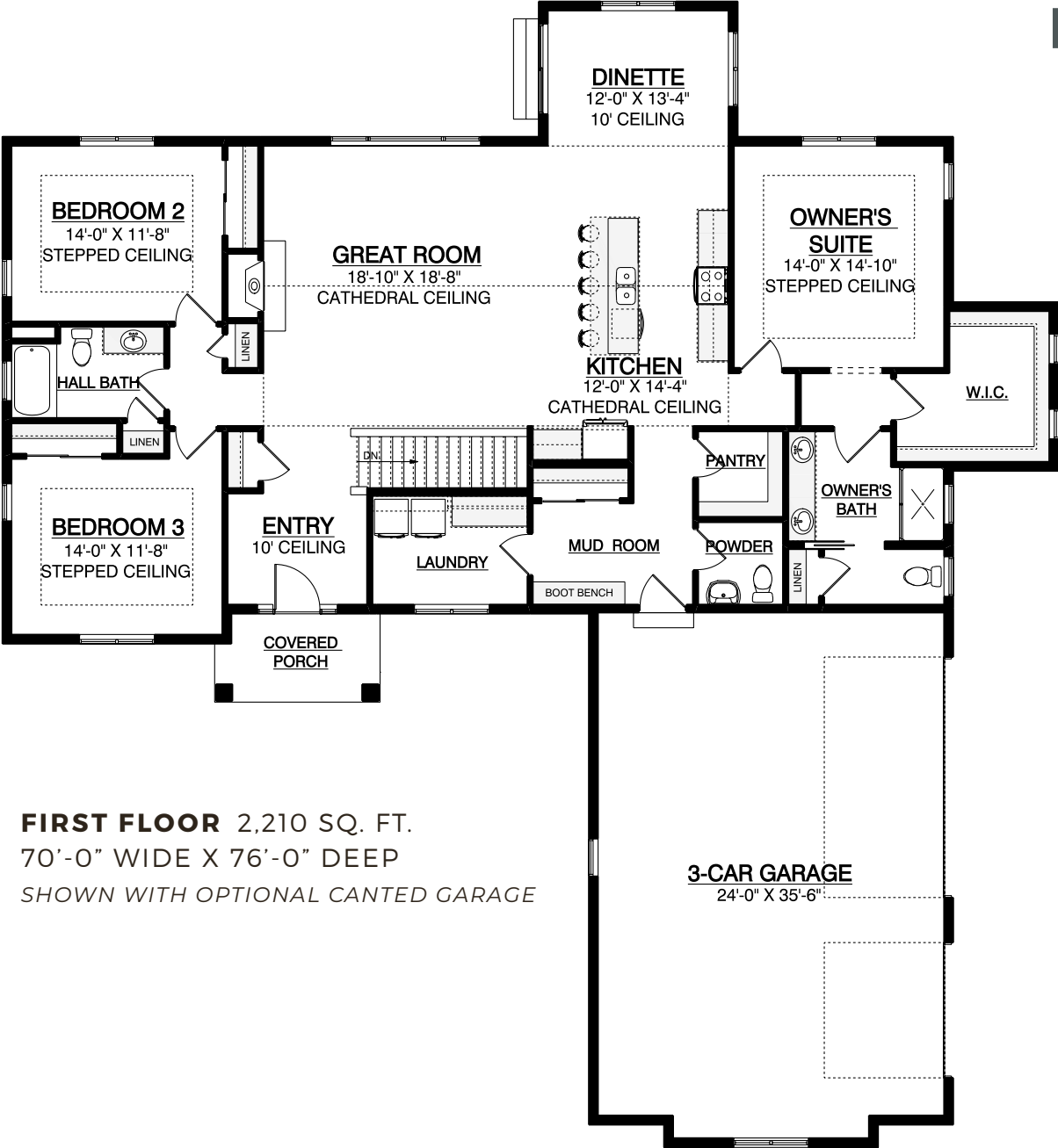
2,210 SQ. FT.

3 BEDROOMS

2.5 BATHS

OPEN-CONCEPT
GREAT ROOM

Building off of our original Pine Ridge model, this open-concept home offers an expanded kitchen pantry and an additional powder room. The open-concept great room brings in natural light, connected to the kitchen by an impressive wood-beamed cathedral ceiling.



FIRST FLOOR 2,210 SQ. FT.
70'-0" WIDE X 76'-0" DEEP
SHOWN WITH OPTIONAL CANTED GARAGE

THE PINE RIDGE I
RANCH DESIGN

FUNCTIONAL
FAMILY HOME

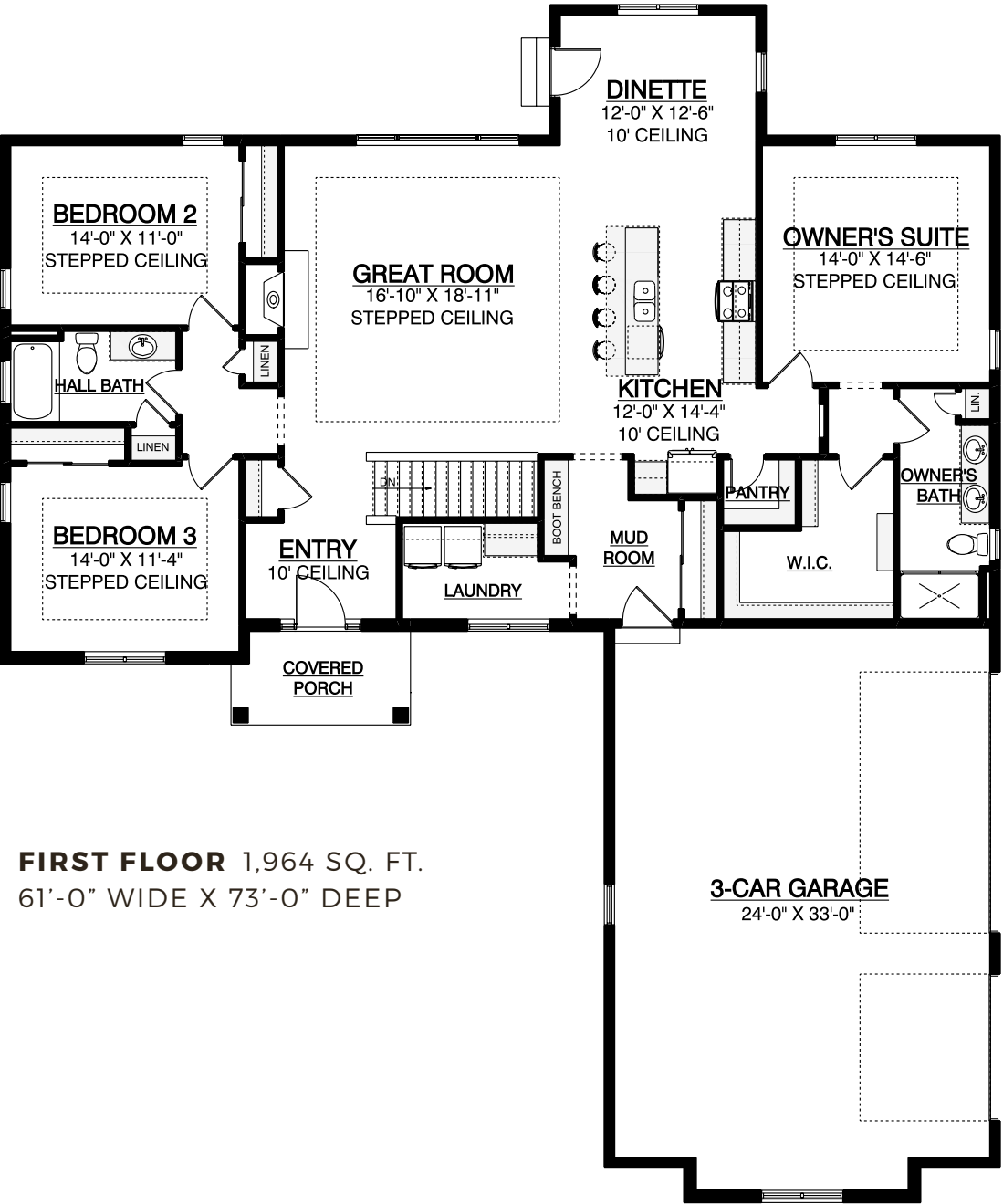
1,964 SQ. FT.

3 BEDROOMS

2 BATHS

IMPRESSIVE
GREAT ROOM

A luxurious family home with high-end finishes such as vaulted ceilings, which provide a generous amount of natural light into the home. Enjoy the luxurious owner's suite, featuring a stepped tray ceiling and a large private bathroom.



FIRST FLOOR 1,964 SQ. FT.
61'-0" WIDE X 73'-0" DEEP

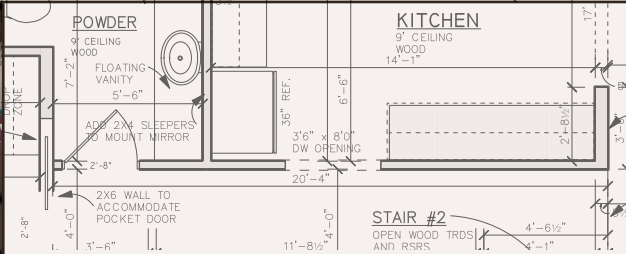
Begin with *your vision*. Renovations Group makes it *home*.

Remodeling can mean a lot of things to a lot of different people. At Renovations Group, we have redesigned mudrooms and we have overhauled entire homes. But no matter the project we understand one thing – a vision must pair with execution. Starting strong in the design process, planning for the complex construction needs of remodeling, and employing a team of talented contractors and designers, our design/build team will keep you involved and informed throughout each step of the process.

Award-winning Designs

Owner-assisted Remodeling

Expansive & Customizable Selections



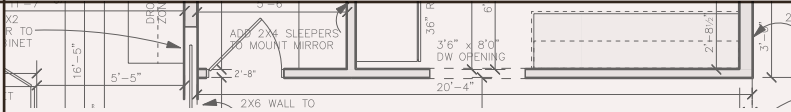
A Unique *Hands-on* Experience.

For the homeowner who enjoys a hands-on experience, owner-assisted remodeling offers our clients a unique opportunity to complete parts of the remodeling project themselves.

Together, we'll determine the labor or products you can provide, and we'll handle the rest.

You'll experience the personal satisfaction of participation and accomplishment while realizing true cost savings.





Home Isn't A Place... It's A Feeling.

Our projects may win awards, but our people win over the trust and gratitude of the clients we serve. At Renovations Group, our experienced, award-winning design team takes the time to clearly understand the specific needs and intended use of your space... and that makes all the difference.



Kitchen & Bathroom Remodels

If you're like most homeowners, your kitchen and bathroom are two of the most frequently used rooms in your home. A smartly designed remodel from Renovations Group can transform your kitchen or bathroom into a space that truly fits your family. Get the functionality you need and a stunning design you deserve with a unique-to-you renovation!



Lower Level Remodels

Maybe your home's lower level was unfinished when you moved in. Or maybe it is finished, but the style and setup no longer serve you. Your lower level should be the ideal spot in your home to kick back, relax, entertain guests, and have fun with your family. If that's not the case, it's time for a remodel. Renovations Group can create a finished lower level that gives you the beautiful space you want for recreation and relaxation.



CUSTOM
LUXURY HOMES



NUPATH
HOMES

CUSTOMIZABLE
MODEL HOMES



RENOVATIONS
GROUP

DESIGN/BUILD
REMODELING



Espire
HOME SELLING TEAM
POWERED BY REALTY EXECUTIVES INTEGRITY

REAL ESTATE
SERVICES



YOUR HOME FOR BUILDING **HOME.**

OUR HOME 530 Hartbrook Drive, Hartland, WI 53029 **WEB** EspireHomes.com

ESPIRE | NUPATH 262-746-2000

RENOVATIONS GROUP 262-821-1100



focus on energy®

Partnering with Wisconsin utilities