

Espire YOUR HOME FOR
BUILDING **HOME.**



The home building process starts *here*.



TABLE OF CONTENTS

OVERVIEW

OUR APPROACH	1
OUR DIVISIONS	3

ESPIRE HOMES

ESPIRE PACKAGES & STANDARD INCLUSIONS . . .	5
THE SORREL	7
THE MAHOGANY	9
THE MADRONO	11
THE SEQUOIA	15
THE BERKLEY	17
THE JUNIPER	19
THE TAMARACK	21
THE ARROWWOOD	23
THE FRASER	25
THE MAGNOLIA	27
THE ACACIA	29
THE SPRUCE	31

Custom Homes

THE ALTISSIMA	33
-------------------------	----

THE MULBERRY	35
THE BIRCH	37

NUPATH HOMES

NUPATH PACKAGES & STANDARD INCLUSIONS .	39
THE REDWOOD	41
THE CASSIA	43
THE SILVER MAPLE	45
THE COTTONWOOD	47
THE HEMLOCK	49
THE WELSH	51
THE LAUREL	53
THE BEECHWOOD	55
THE JASMINE	57
THE CATALPA	59
THE ROWAN	61
THE CYPRESS	63
THE HICKORY	65
THE PINE RIDGE	67

RENOVATIONS GROUP

OUR DESIGN/BUILD DIVISION	69
-------------------------------------	----

Begin with *your vision*. Espire makes it *home*.

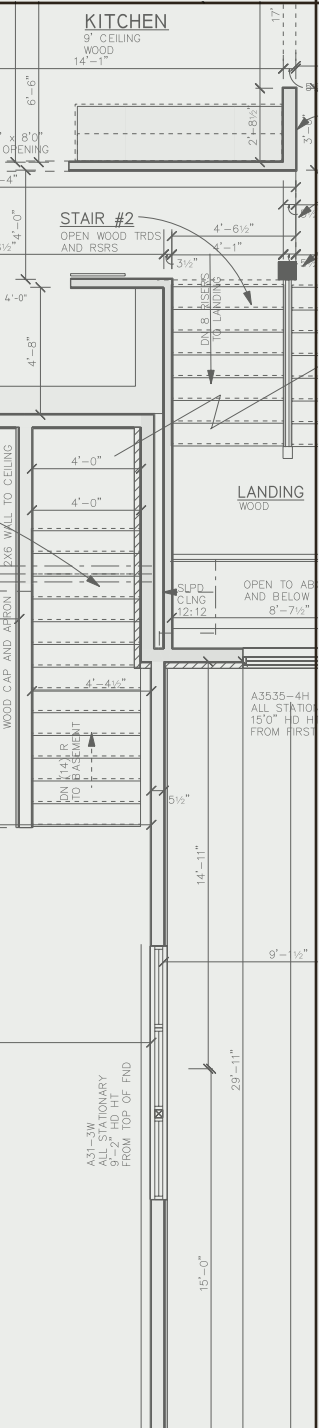
At Espire, our passion isn't about square footage, fixtures, or finishes for a house. It's about helping families find the perfect design, budget, and plan for their home. That's why we offer three distinct divisions. Each brings you the same high-touch service experience, along with our skilled contractor and supplier network, while allowing for versatility and customization throughout the entire process. Forget the one-size-fits-all approach to construction. Let's find the right path for your home together.

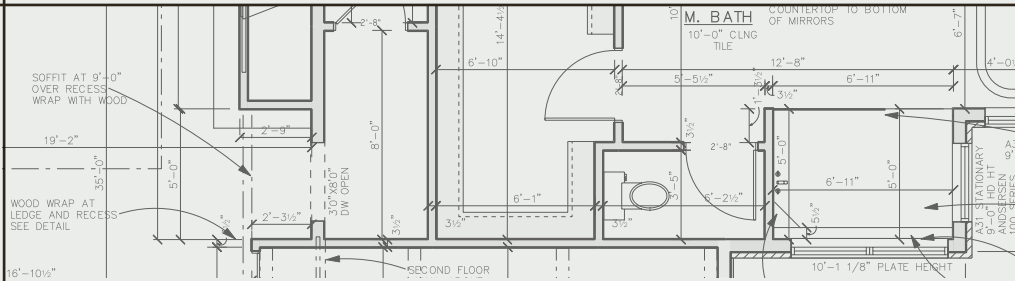
Versatile Approach & Customization

High-touch Service Experience

Design & 3D Architecture

Skilled Team, Contractor & Supplier Network





Expect *excellence* in service, design, and construction.

Espire is about elevating the construction experience. Involving you in every aspect of the building process so we're able to transform your dream into a beautiful new home or freshly renovated space that uniquely reflects who you are. Be it custom home design, model home building, or renovations, we bring passion and owner-involvement to each project.

We are Espire, Your Home for Building Home.



We are custom *luxury* homes.

As you explore your new construction needs, we're ready with pre-designed floor plans or fully custom home designs to ensure that your home perfectly aligns with your lifestyle.

- Signature Home Plans
- Fully Custom Designs
- Top-of-the-line Finishes



We are *customizable* model homes.

We're ready to bring your vision to life with hundreds of ways to customize your package to meet your design needs.

- Extensive Models & Floor Plans
- Generous Standard Features
- Personalized Packages



We are design/build *remodeling*.

While remodeling can mean many different things, our skilled team is ready to help with your renovation needs.

- Lower Levels & Additions
- Whole Homes, Kitchens & Baths
- Owner-assisted Remodeling



Our Esquire Homes Packages feature dozens of features that far exceed our customer’s expectations. From the beauty of wood windows to the energy savings of higher insulation values, you’ll find what you expect in a luxury home.

BUILDING INCLUSIONS

- Versatile approach and customization
- Design and 3D architecture
- High-touch service experience
- Skilled team, contractor, and supplier network
- Design consultation and plan customization
- Budget and timeline planning
- Building site consultation
- Focus on Energy Certified New Home
- Form-A-Drain tile footing system with crock and sealed sump pump
- Full 9’ high, 10” thick foundation walls
- Foundation insulation with stucco coat on the top 12”
- Two (2) vinyl basement windows with area wells connected to drain tile system
- Steel beams and tube columns
- Poured concrete basement floor, garage floor, and front stoop
- 2”x6” , 16” O.C. exterior wall framing with OSB sheathing
- 2”x6” , 16” O.C. exterior garage wall framing with OSB sheathing
- Tyvek house wrap on exterior house and garage walls to prevent air and water penetration
- Flex wrap on all windows and door sills to prevent air infiltration and sill rot
- Engineered I-Joist floor system with T&G high performance floor sheathing, nailed and glued
- Engineered roof trusses, 24” O.C. with OSB sheathing
- R-23 bib insulation in walls at framed exterior walls, excludes garage
- 2” closed cell foam at all box sills
- R-50 blown in attic insulation, excludes garage
- Wood vinyl clad high-performance casement windows and patio door with wood jambs

INTERIOR BUILDING INCLUSIONS

- 96% high efficiency furnace
- Honeywell media air cleaner
- 16 SEER high efficiency central air conditioner
- Honeywell T6 WiFi programmable thermostat
- Ventilation for kitchen hood, dryer, and bathrooms
- Tankless water heater
- Rough-in ¾ bath in basement for future bathroom
- Esquire Series Kohler plumbing fixtures, pressure balanced, faucets (select styles and finishes)
- Oasis acrylic tub and shower modules
- Mudset shower floor with curb in owner’s bathroom with ceramic tile walls
- Kohler undermount oval or rectangle vitreous china sinks in bathrooms
- Kohler comfort height elongated toilets
- Kohler Neoroc sink in kitchen with Kohler black, brushed nickel, or chrome faucets (select styles)

INTERIOR BUILDING INCLUSIONS CONTINUED

- Kohler pedestal sink in powder room with wide spread black, brushed nickel, or chrome faucet (select styles)
- Garbage disposal with air switch
- Prep water/ice maker line to refrigerator
- Sterling by Kohler undermount single-bowl laundry sink
- Laundry room washer box with hot/cold water
- Dishwasher hookup
- 200-amp electrical service
- Smoke detectors and carbon monoxide detectors
- Decora switches and outlets
- Electric hook-up for dryer and range/oven
- Structured wiring package
- Choice of knockdown or sand texture on interior walls
- Square or rounded corners on interior walls
- Interior painting on ceilings and walls throughout
- Painted MDF or stained poplar trim and interior, 3-hinge doors, variety of styles
- Wood window extension jambs with casing, painted or stained
- Select species stair parts with option of select iron styles
- High-end superior cabinetry, multiple wood species options, variety of door styles with soft-close hinges and dovetail drawers with full extension, soft-close glides
- Esquire Series wood hood and select accessories
- Comfort height vanities in all bathrooms
- Select stain and designer paint finishes and select cabinet accessories
- Esquire series quartz/granite countertops in kitchen, all bathrooms (excluding powder room), and laundry room
- Framed mirrors above bathroom vanities (excluding powder room)
- Direct vent gas fireplace with fan, logs, and remote
- Thin-cut stone veneer fireplace face to mantel with flush Bedford hearthstone and wood mantel
- Schlage levers on doors, choice of style and finish
- Cabinet door and drawer hardware allowance
- Towel ring per sink, towel bar per bathroom (excluding powder room), and

- toilet paper holder per toilet
- Shower Enclosure (Clear glass with choice of black, brushed nickel, or chrome hardware; style varies per plan)
- Ceramic tile flooring in all bathrooms and laundry room (excluding powder room)
- Ceramic tile shower walls and mudset floor with curb in owner’s bathroom
- Ceramic tile kitchen backsplash allowance
- Wood flooring in main living areas and powder room (tile in laundry and full baths; areas vary per plan)
- Carpet allowance
- Light fixture allowance
- Appliance allowance (meaningful allowance towards custom appliance selection)
- Rough and finish cleaning
- Duct cleaning at completion of build

EXTERIOR BUILDING INCLUSIONS

- Superior exterior design consisting of a combination of shape, texture, and color
- Limited lifetime high-definition shingles
- Continuous ridge vent and enamel baked colored valleys to match shingle color
- Ice and water shield applied on eaves and valleys
- Energy rated insulated fiberglass exterior doors with deadbolts
- Front full view storm door with interchangeable storm/screen door
- 8’ tall triple layer insulated steel overhead garage doors
- Two (2) LiftMaster Premium Series ½ HP AC chain drive openers with two (2) transmitters, keyless entry system, and MyQ technology
- James Hardie Hardie® Plank climate engineered primed lap siding
- MiraTEC trim, window wraps, and corners
- MiraTEC fascia and LP panel soffit
- Exterior caulking
- Exterior painting includes prime and two coats
- Maintenance-free, seamless, aluminum gutters with 4” downspouts
- Thin-cut stone exterior veneer per plan
- Two (2) exterior frost-proof hose bibs
- Two (2) exterior weatherproof GFCI outlets
- Wired front doorbell



COZY TWO-STORY HOME

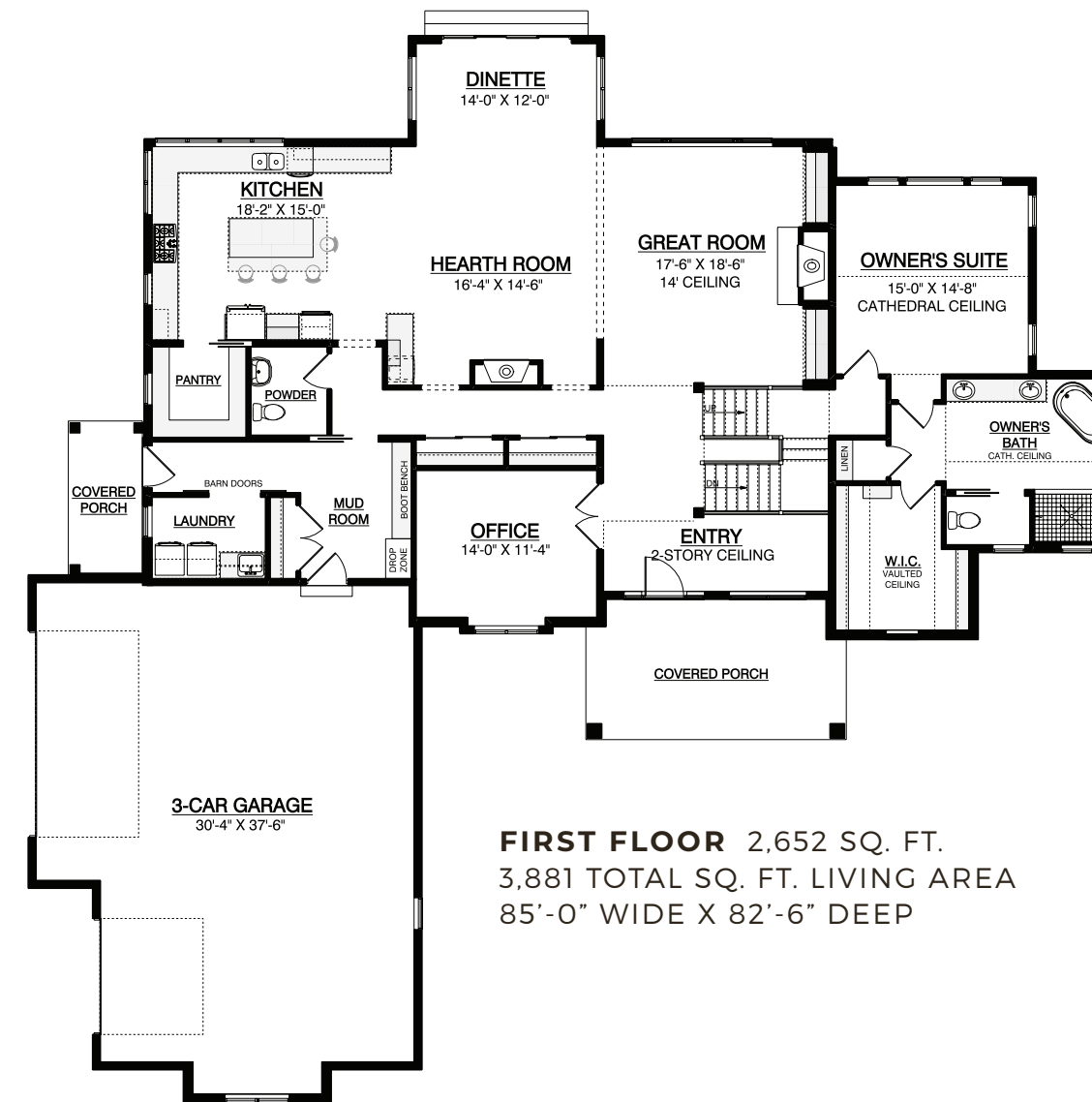
3,881 SQ. FT.

4 BEDROOMS

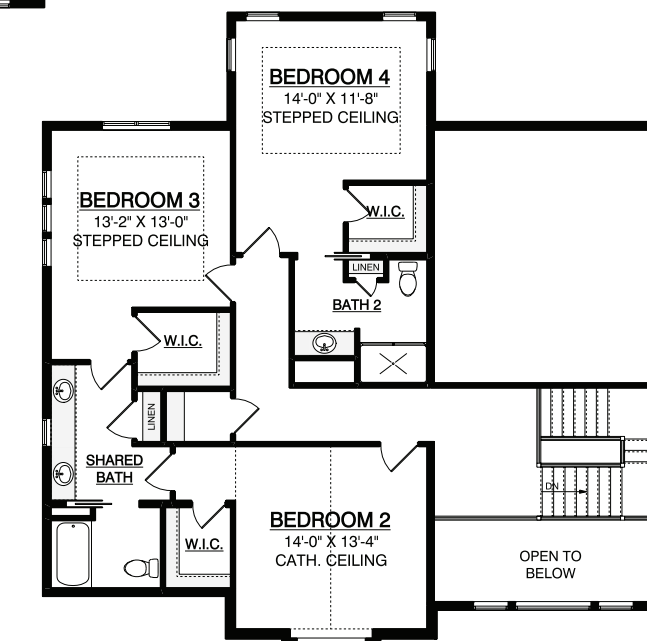
3.5 BATHS

ELEVATED OWNER'S SUITE

A two-story home uniquely built for comfortable living featuring three porches, an elevated, truly private owner's suite, and a relaxing hearth room with a stately fireplace.



FIRST FLOOR 2,652 SQ. FT.
3,881 TOTAL SQ. FT. LIVING AREA
85'-0" WIDE X 82'-6" DEEP



SECOND FLOOR 1,229 SQ. FT.



THE MAHOGANY

TWO-STORY DESIGN

**TWO-STORY
FAMILY
HOME**

3,445 SQ. FT.

4 BEDROOMS

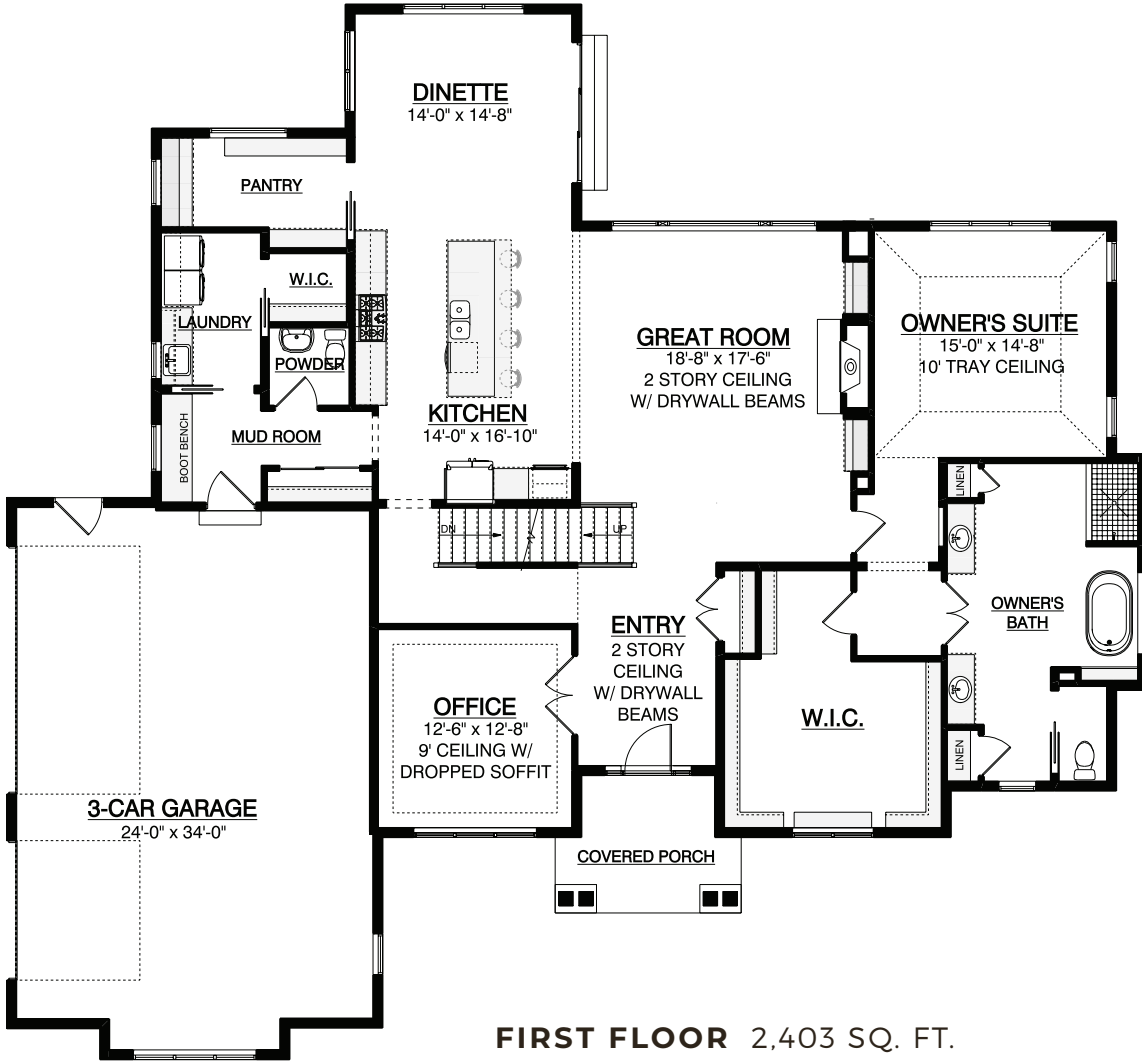
3.5 BATHS

**PRIVATE
OWNER'S SUITE**

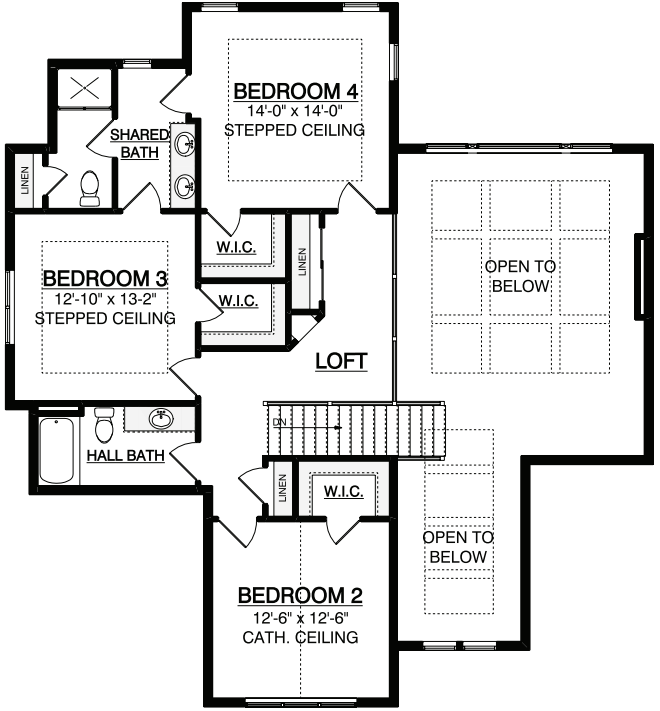
This roomy floor plan offers the trademark visual appeal of previous Madrono design while further expanding on their most desirable aspects. Enjoy the large owner's suite, second-floor loft, and beamed ceilings that make this a luxurious and ultra-livable family home.



*ELEVATION PER MODEL



FIRST FLOOR 2,403 SQ. FT.
3,445 TOTAL SQ. FT. LIVING AREA
73'-4" WIDE X 67'-10" DEEP



SECOND FLOOR 1,042 SQ. FT.





THE MADRONO

TWO-STORY DESIGN

OPEN-
CONCEPT
FAMILY
HOME

3,350 SQ. FT.

4 BEDROOMS

3.5 BATHS

PRIVATE
OWNER'S SUITE

A luxurious open-concept home that boasts a built-in buffet in the dining room and an oversized kitchen island, making it ideal for entertaining dinner guests. The great room has a two-story beam ceiling, which looks even more impressive from the second-story loft!



*ELEVATION PER MODEL

ELEVATION A



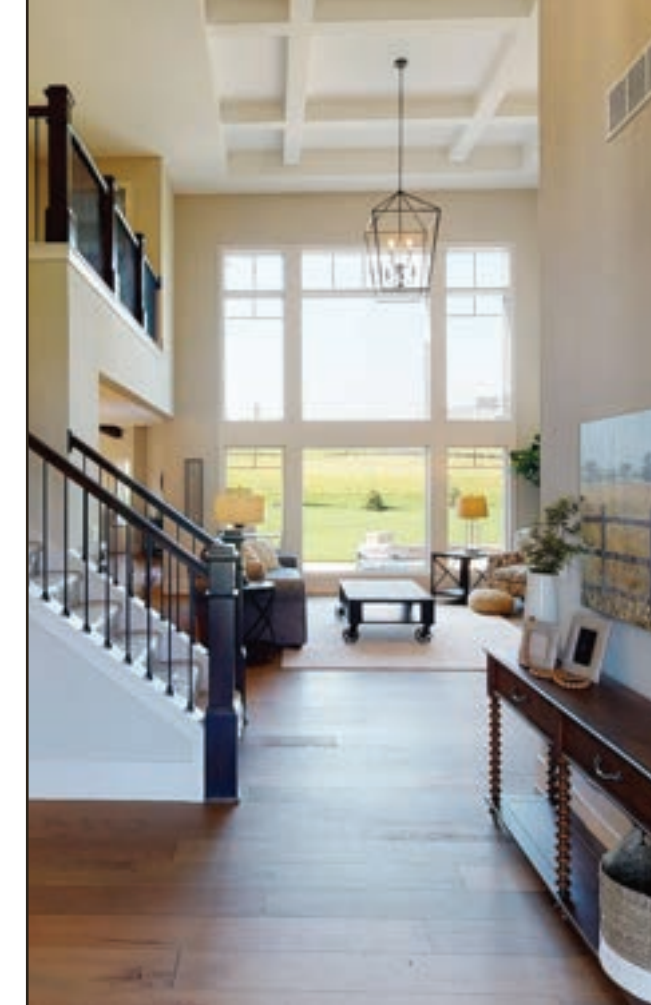
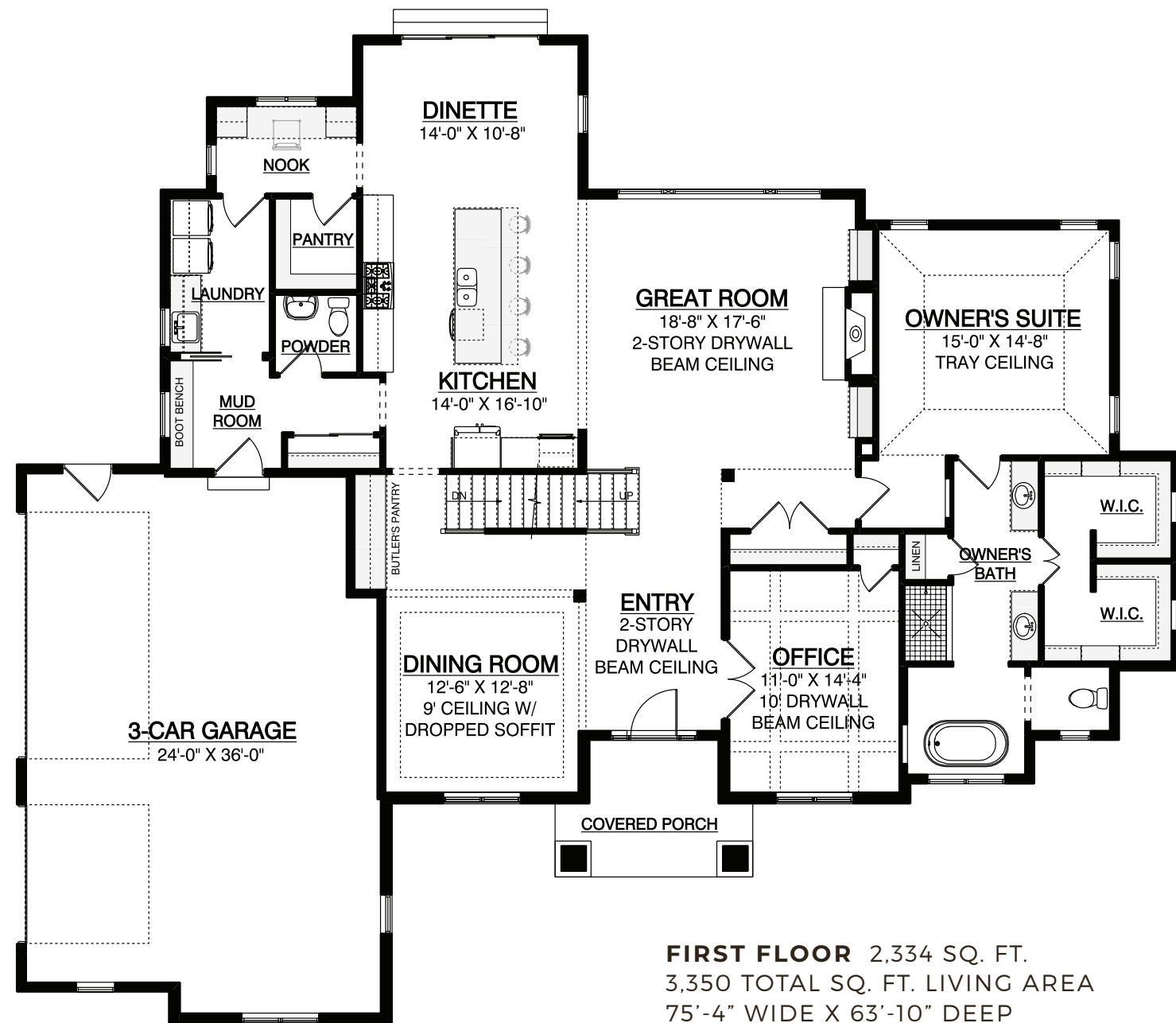
*ELEVATION PER MODEL

ELEVATION B



*ELEVATION PER MODEL

ELEVATION C



An ever-evolving *classic*.

One of our most popular homes, The Madrono series of homes is the cross-section of luxury, functionality, and serenity, while each iteration of this floor plan is fit for a different lifestyle.



THE SEQUOIA

TWO-STORY DESIGN

AWARD
WINNING
PARADE
MODEL

3,200 SQ. FT.

4 BEDROOMS

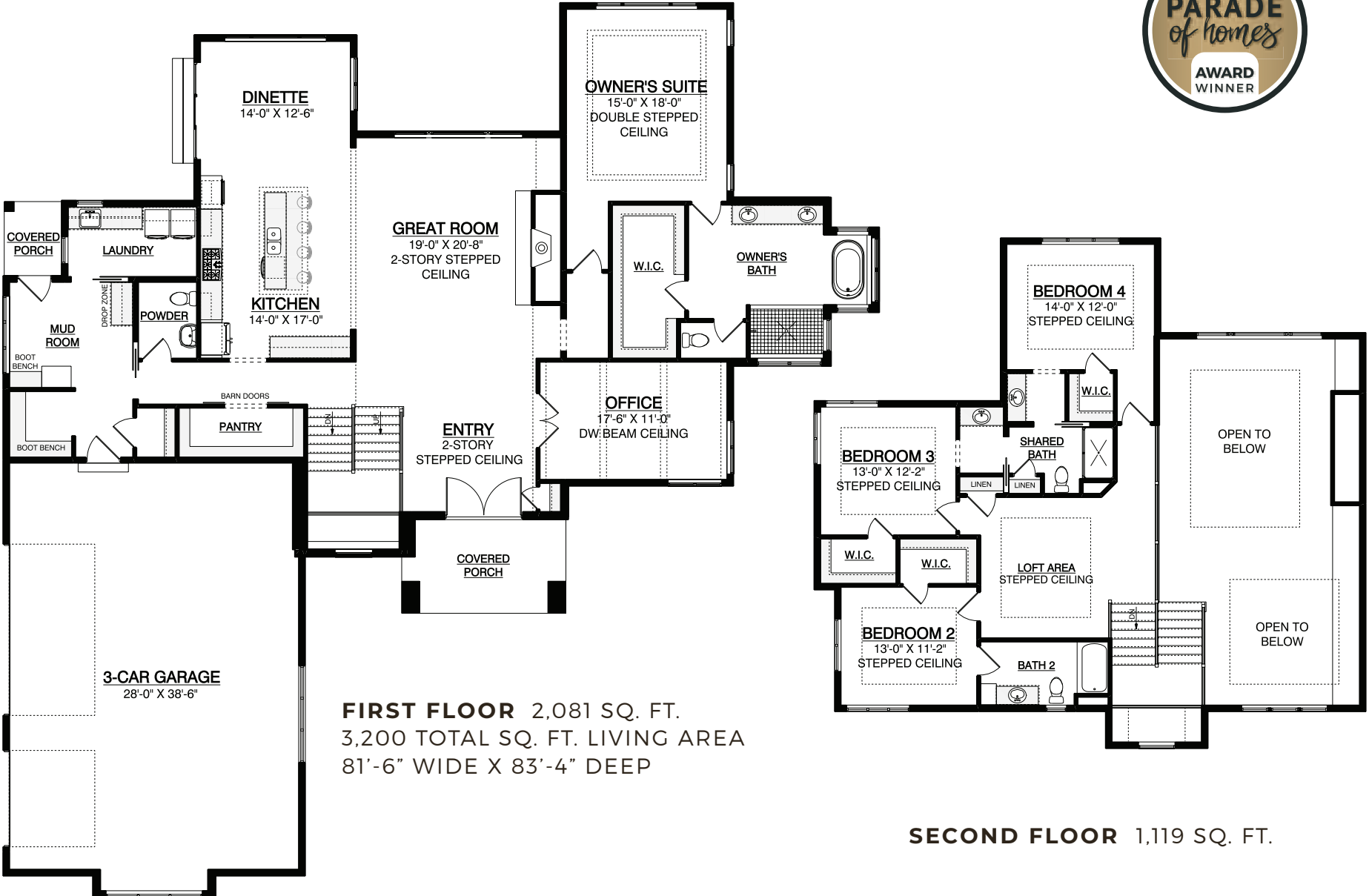
3.5 BATHS

SUSPENDED
STAIRCASE

A distinctive two-story home that artfully combines clean, modern design with the warmth of a family living space. The exterior makes an impression with its striking geometric features, including stone columns and black-trimmed windows.



*ELEVATION PER MODEL





2024 PARADE MODEL



3,341 SQ. FT.

3 BEDROOMS

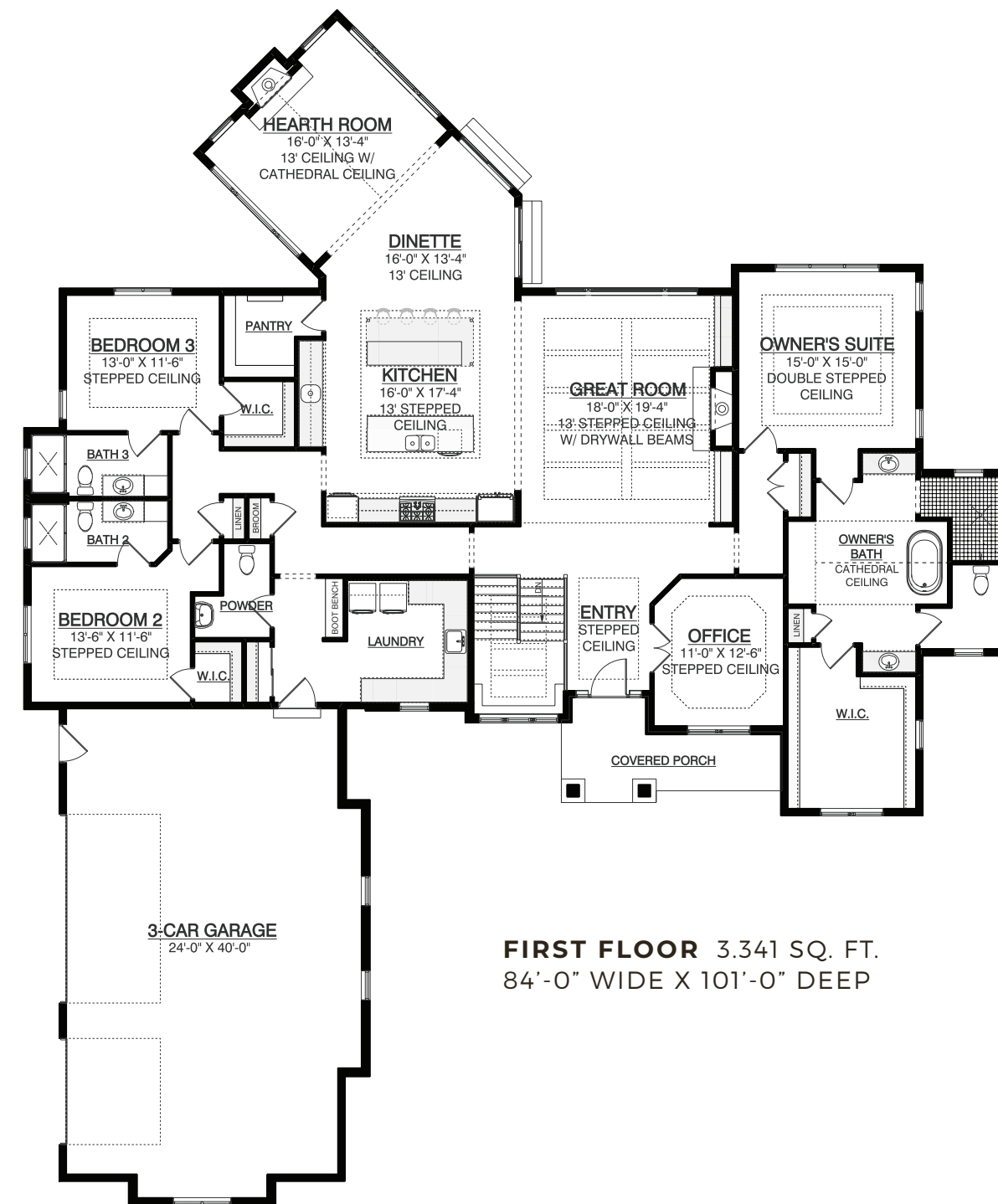
3.5 BATHS

GLAMOROUS STEPPED CEILINGS

Modern elegance meets classic charm in this ranch-style home. The great room's glamorous stepped ceiling and sophisticated ceramic tile fireplace invite you to unwind at the end of the day.



*ELEVATION PER MODEL



FIRST FLOOR 3.341 SQ. FT.
84'-0" WIDE X 101'-0" DEEP



**AWARD-
WINNING
PARADE
MODEL**

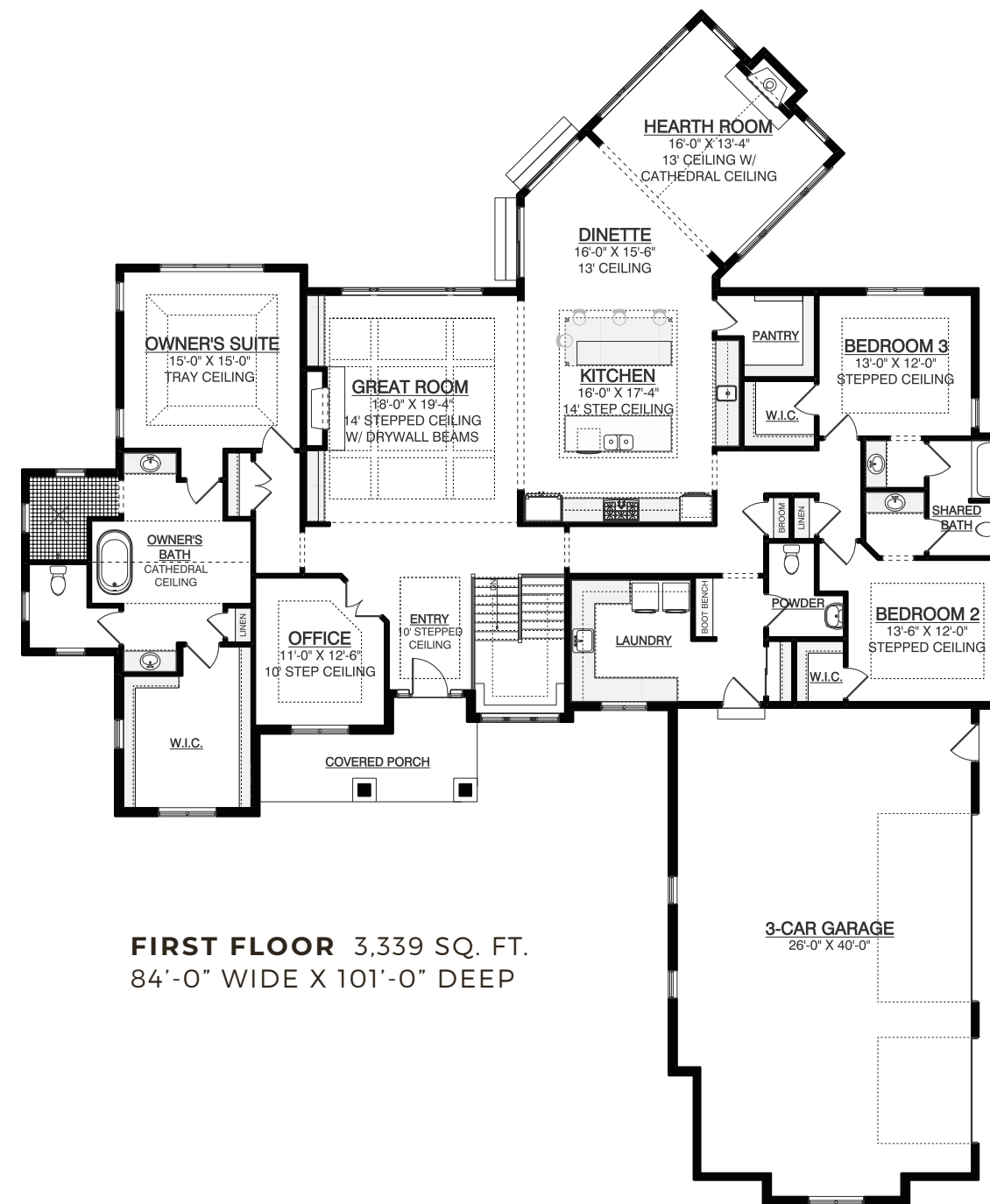


TOWER EFFECT STAIRCASE

Designed with flow and functionality in mind, this home showcases a 14' ceiling and expansive windows to bring in tons of natural light. You can look forward to relaxing in the hearth room, which features a wood-planked fireplace.



*ELEVATION PER MODEL



FIRST FLOOR 3,339 SQ. FT.
84'-0" WIDE X 101'-0" DEEP



SPACIOUS RANCH LIVING

3,187 SQ. FT.

3 BEDROOMS

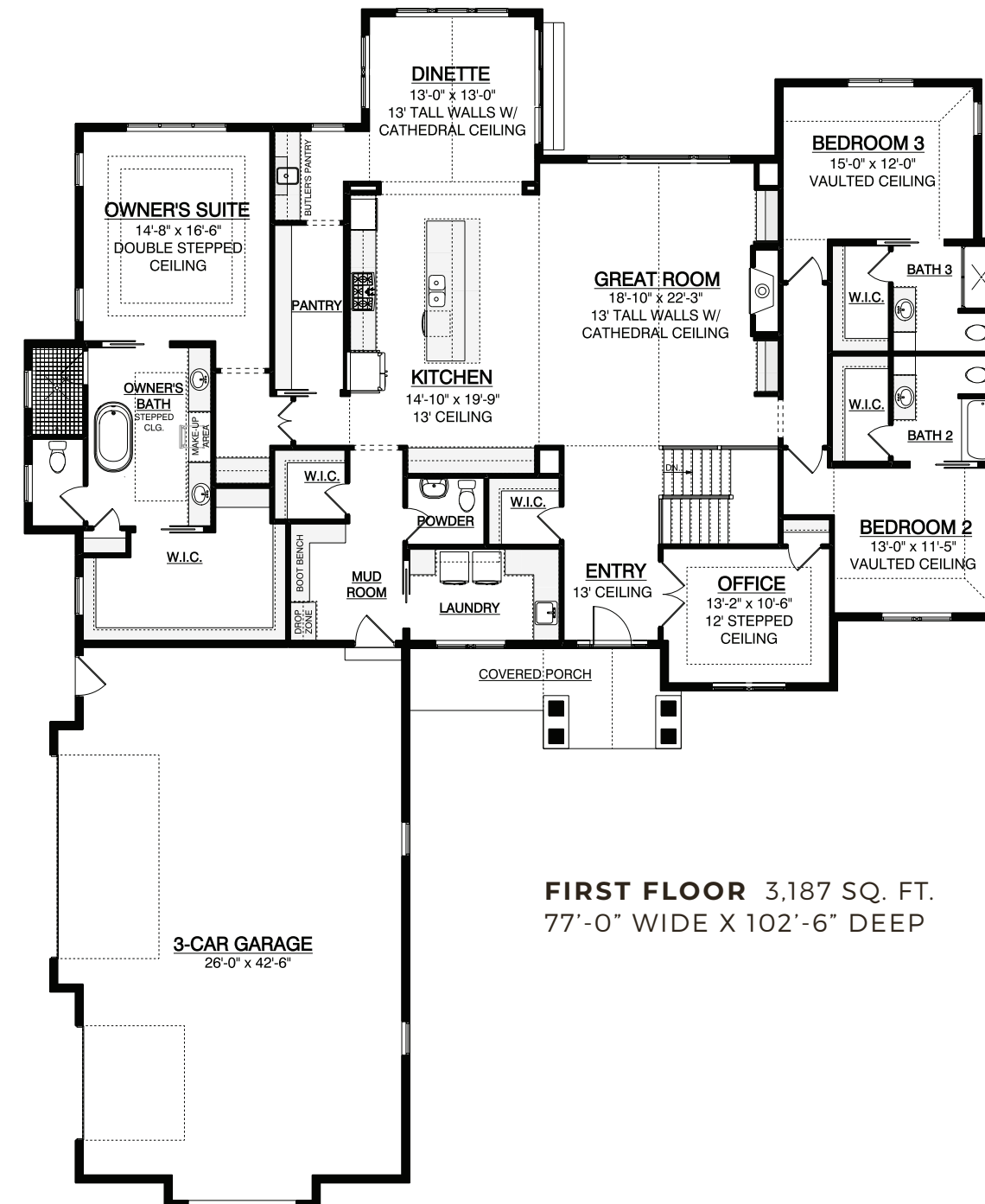
3.5 BATHS

PRIVATE OWNER'S VESTIBULE

The ranch-style floor plan of The Tamarack offers a private sanctuary in the owner's suite. Set apart from the main living area, the suite is accessed through its own dedicated vestibule for added privacy and retreat.



*ELEVATION PER MODEL



FIRST FLOOR 3,187 SQ. FT.
77'-0" WIDE X 102'-6" DEEP



PAST PARADE MODEL

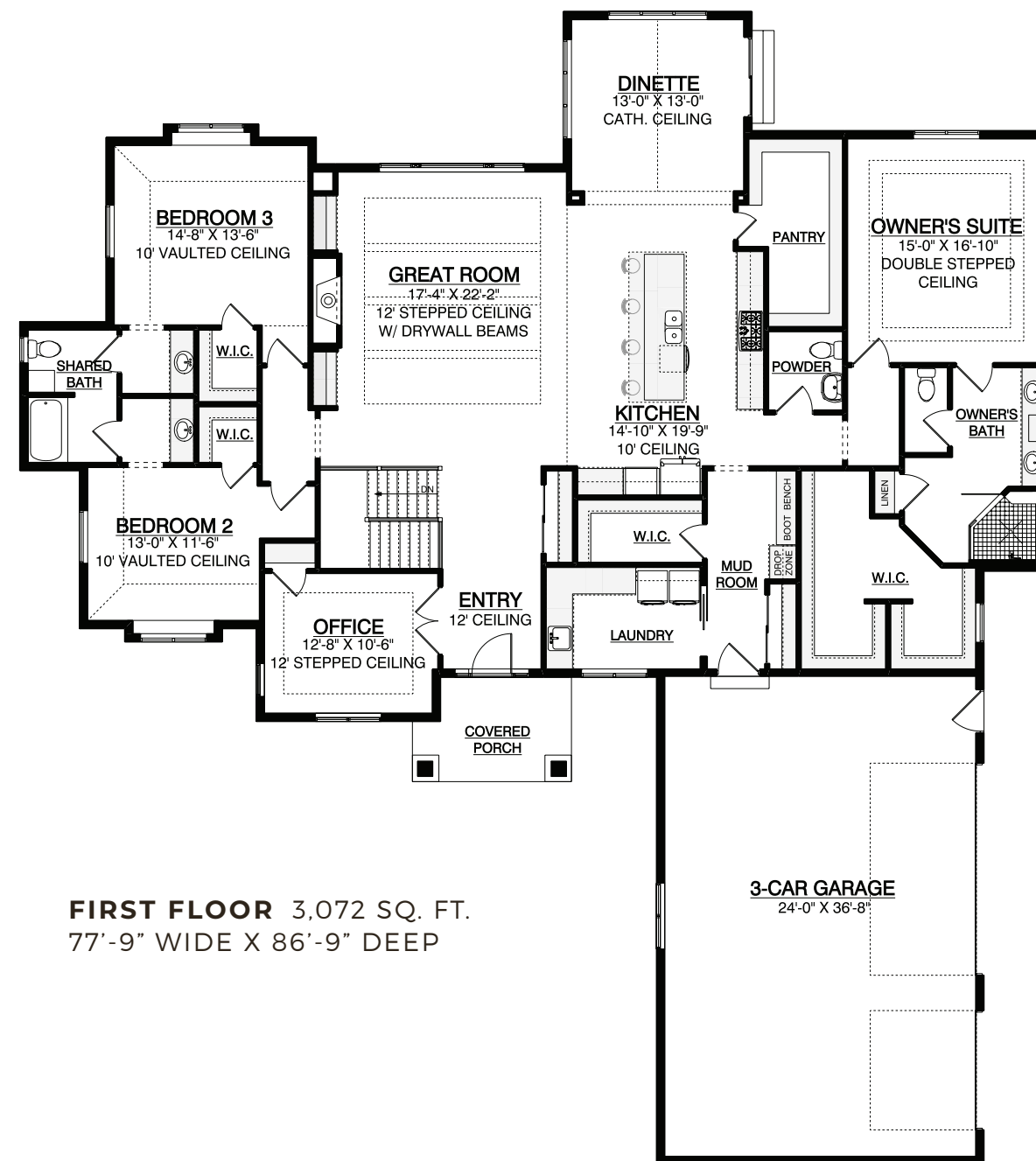
3,072 SQ. FT.

3 BEDROOMS

2.5 BATHS

BONUS STORAGE

Ideal for the modern family, this ranch-style home updates our Acacia model by adding more storage space and functionality. The fireplace in the great room is surrounded by a floor-to-ceiling stone hearth, making it the perfect spot to unwind at the end of the day.



FIRST FLOOR 3,072 SQ. FT.
77'-9" WIDE X 86'-9" DEEP

3-CAR GARAGE
24'-0" X 36'-8"



Designed for *relaxation*.

The private owner's suite boasts a lofty double-stepped ceiling, expansive walk-in closets, and an en-suite bathroom. The spa-like shower in the bath is a true luxury, providing the ideal relaxation spot.





THE FRASER RANCH DESIGN

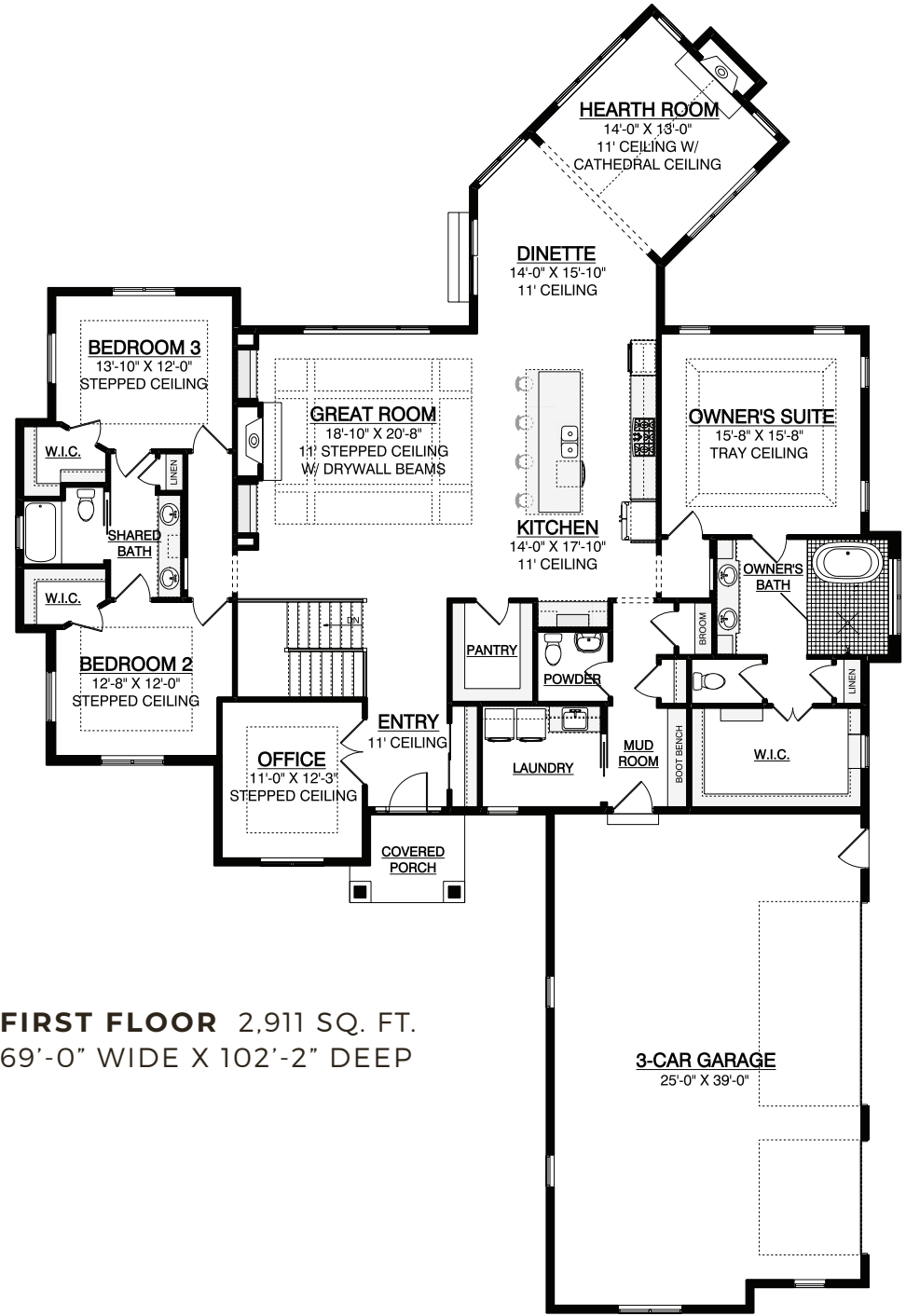
BLISSFULLY
OPEN
LAYOUT

- 2,911 SQ. FT.
- 3 BEDROOMS
- 2.5 BATHS
- LUXURIOUS OWNER'S EN-SUITE

An expertly-crafted home with an open layout designed for entertaining family and friends. The charming hearth room has beautiful beams lining the cathedral ceiling, giving the space a regal appearance.



*ELEVATION PER MODEL



FIRST FLOOR 2,911 SQ. FT.
69'-0" WIDE X 102'-2" DEEP

"We would like to thank you for the wonderful home that you and your team have helped to create for us. This is the third home we have built and the quality and workmanship from the material selections, suppliers and contractors was evident throughout the construction of our home."

- Duane & Leslie



LUXURY EXECUTIVE HOME

2,861 SQ. FT.

3 BEDROOMS

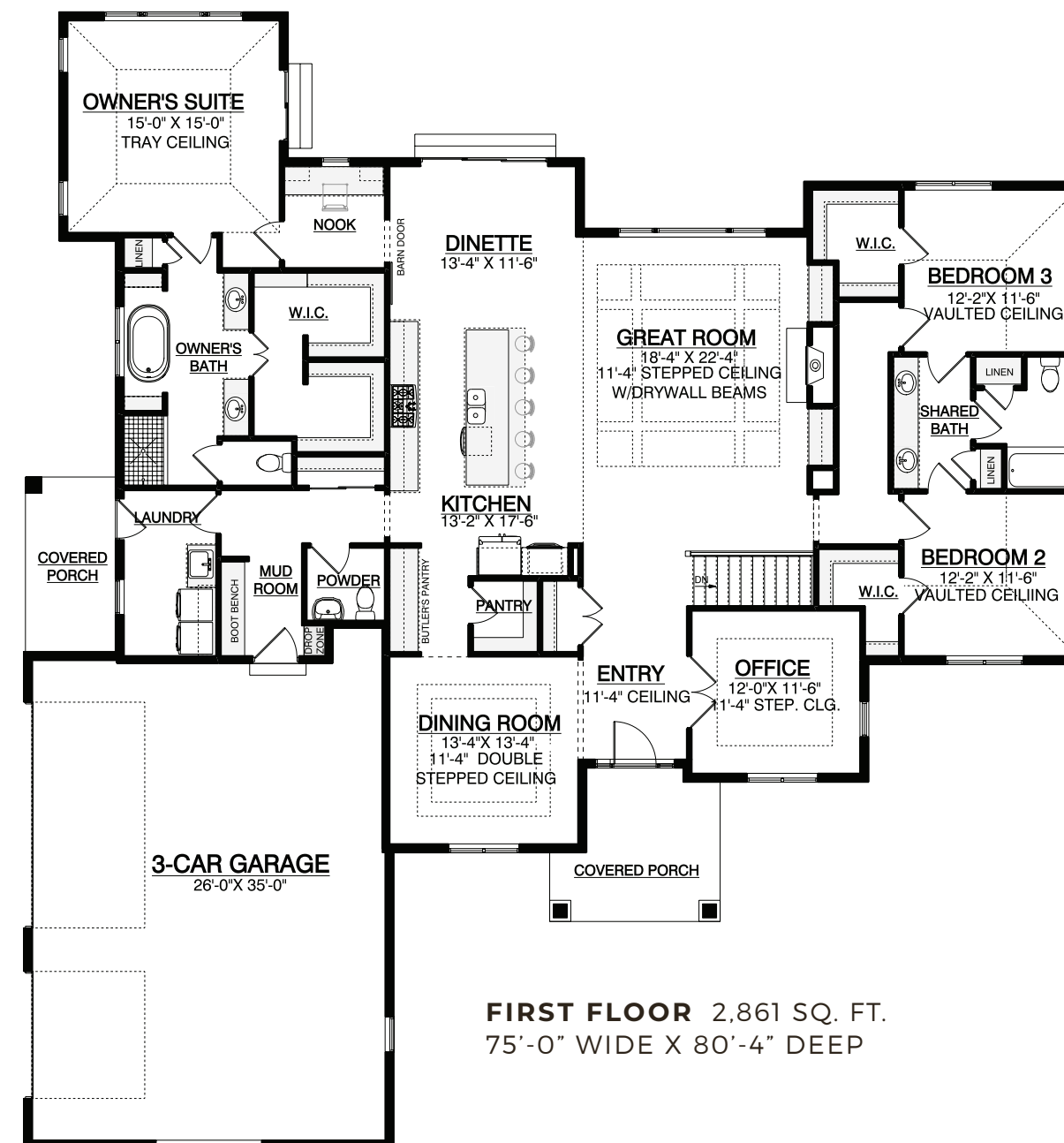
2.5 BATHS

GOURMET KITCHEN

An executive home with a 12' beamed ceiling in the open-concept great room, giving the space a luxurious and welcoming feeling. With a dining room and butler's pantry, there is plenty of space to entertain.



*ELEVATION PER MODEL



FIRST FLOOR 2,861 SQ. FT.
75'-0" WIDE X 80'-4" DEEP



THE ACACIA RANCH DESIGN

MODERN
LIFESTYLE
RANCH

2,804 SQ. FT.

3 BEDROOMS

2.5 BATHS

THREE-SEASON
ROOM

A luxurious ranch-style home featuring a stunning 12' beamed ceiling in the open-concept great room. There is plenty of space for the entire family, with bedrooms accessible from a separate hallway and a shared bathroom.

ELEVATION A

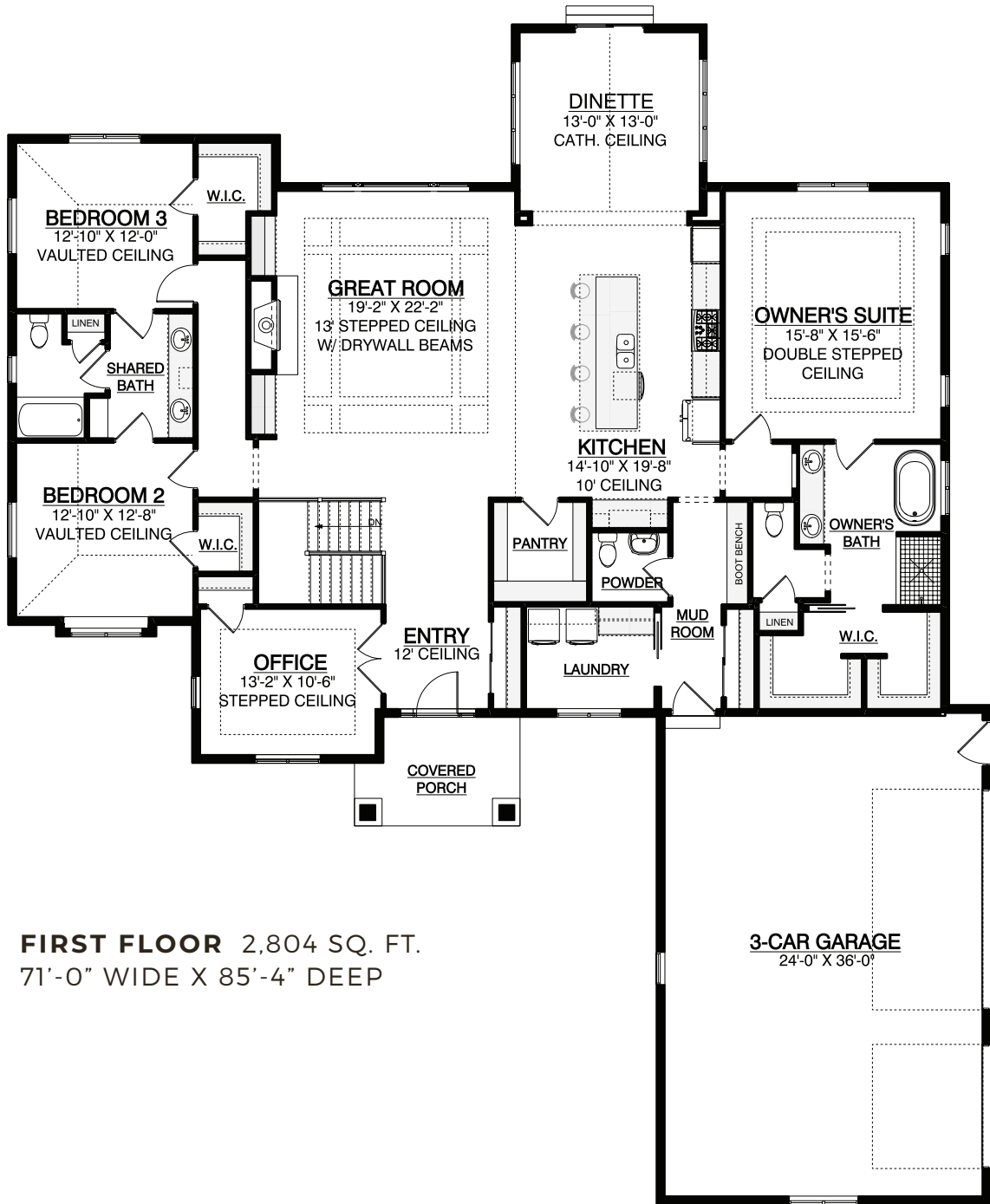


*ELEVATION PER MODEL

ELEVATION B



*ELEVATION PER MODEL



FIRST FLOOR 2,804 SQ. FT.
71'-0" WIDE X 85'-4" DEEP

3-CAR GARAGE
24'-0" X 36'-0"



PAST PARADE MODEL

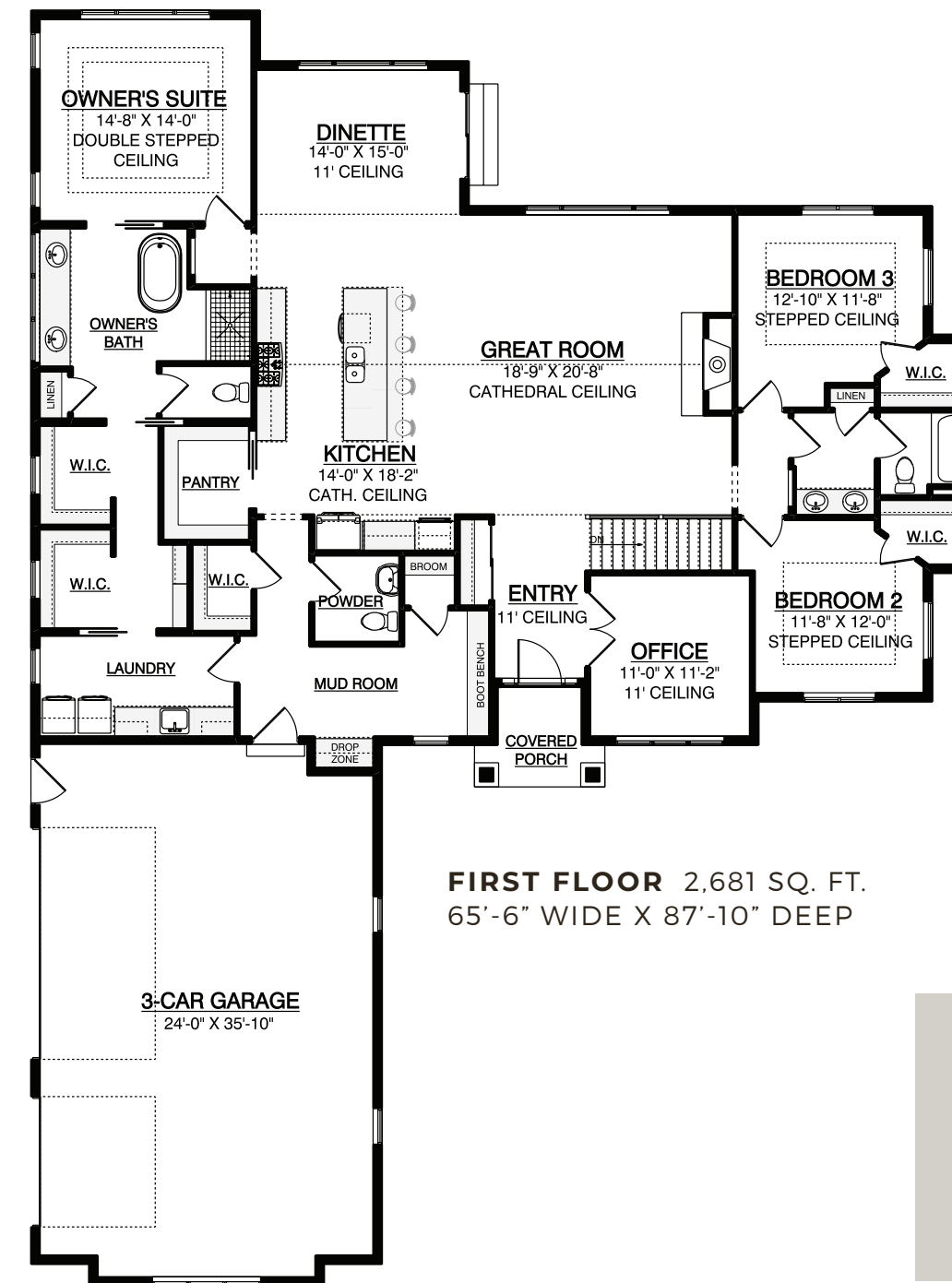
2,681 SQ. FT.

3 BEDROOMS

2.5 BATHS

PREP PANTRY

With a large owner's suite, a wood-mantle fireplace, and an open-concept great room, this luxurious ranch-style home is ready to be made your own! The owner's suite is the ultimate luxury, featuring a private bathroom with a soaking tub and shower, and walk-in closet.



“The professionalism, transparency, and communication of this team is unheard of these days... They built us the home of our dreams that we can’t wait to start a family in.”

- Christine & Greg



THE ALTISSIMA

CUSTOM TWO-STORY DESIGN

AWARD-WINNING
PARADE
MODEL

6,188 SQ. FT.

6 BEDROOMS

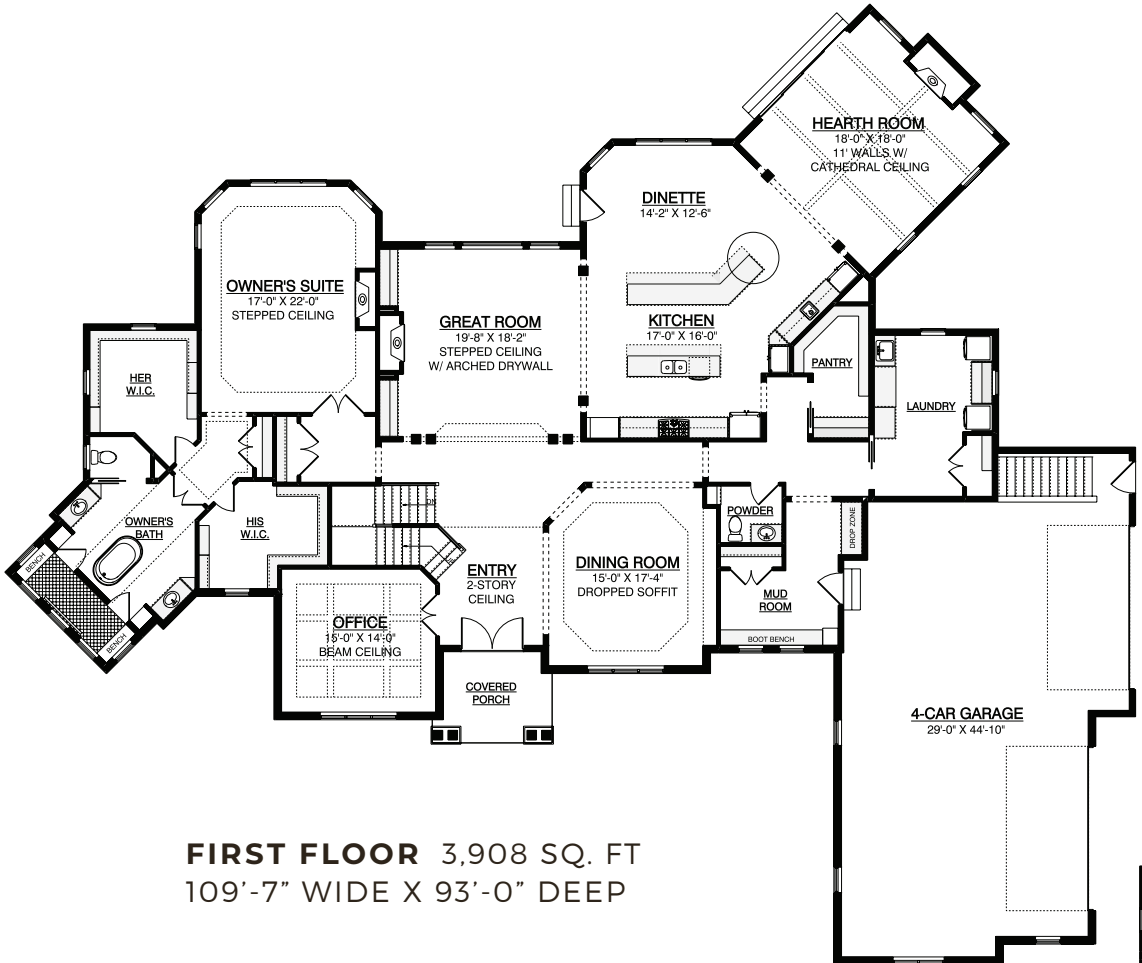
5.5 BATHS

VEGAS
OWNER'S SUITE

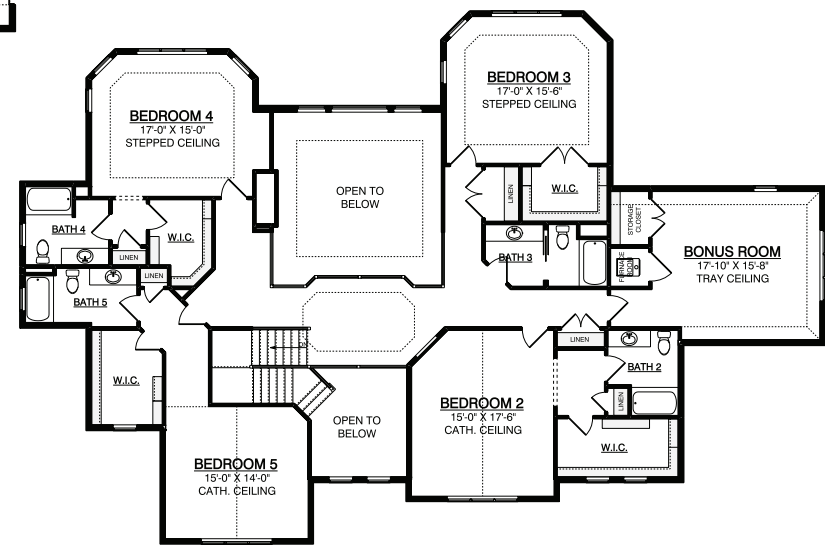
When it comes to deluxe features, this custom home has everything you need! Whether you're gathering at the oversized snack bar in the kitchen or by one of the four fireplaces this home offers, you'll have plenty of options for entertaining guests!



*ELEVATION PER MODEL



FIRST FLOOR 3,908 SQ. FT
109'-7" WIDE X 93'-0" DEEP



SECOND FLOOR 2,280 SQ. FT.





THE MULBERRY

CUSTOM TWO-STORY DESIGN

2025
PARADE
MODEL

5,454 SQ. FT.

4 BEDROOMS

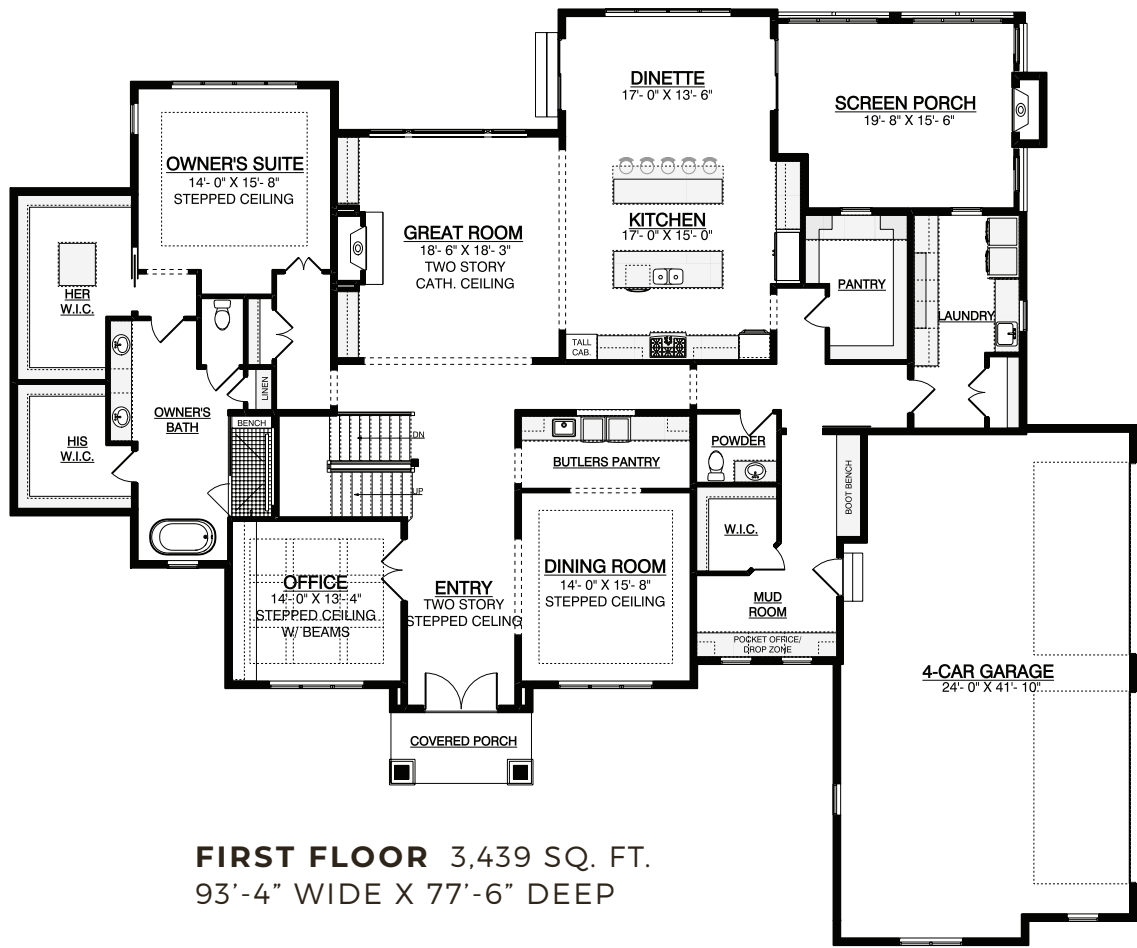
3.5 BATHS

SOCIALLY-CENTERED SPACES

Social connection drives the design of The Mulberry. At the heart of the home, a stunning dining room connects to the kitchen through a butler's pantry and pass-through window, offering both function and flair for entertaining.



*ELEVATION PER MODEL



FIRST FLOOR 3,439 SQ. FT.
93'-4" WIDE X 77'-6" DEEP



SECOND FLOOR 2,015 SQ. FT.





THE BIRCH

CUSTOM RANCH DESIGN

AWARD-WINNING
PARADE
MODEL

3,678 SQ. FT.

3 BEDROOMS

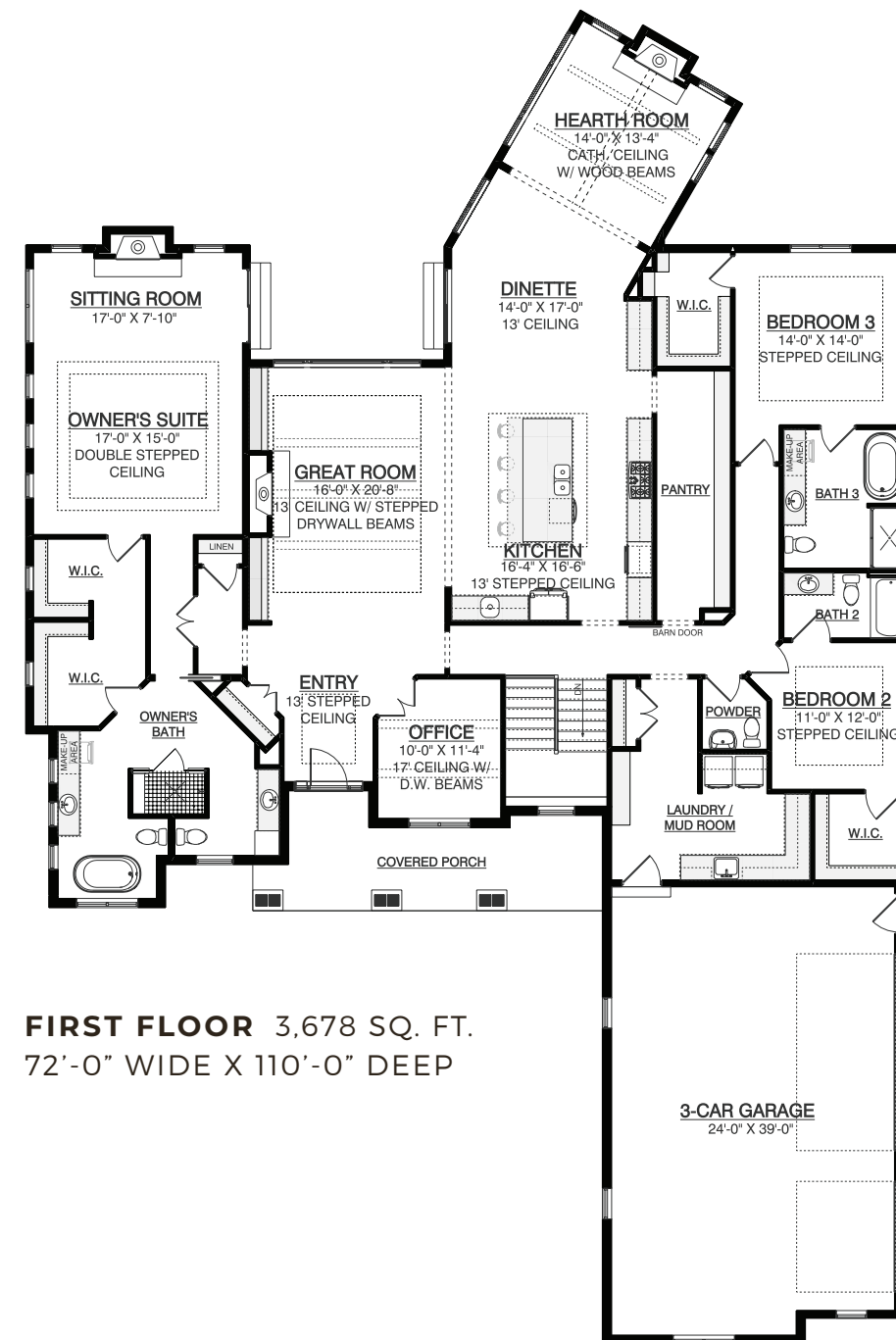
3.5 BATHS

LUXURIOUS
OWNER'S SUITE

A stunning split-bedroom ranch that makes the most of every room. Soaring cathedral ceilings welcome you into an open, flowing floor plan. You'll love the 13' ceilings throughout the main level, and a 17' "tower effect" ceiling in the study.



*ELEVATION PER MODEL



The modern, *functional* kitchen.

The gourmet kitchen of The Birch is perfect for any inspired cook. Equipped with a large island and walk-in pantry, you'll have plenty of room to store ingredients and prepare your favorite meals.





Our NuPath Homes Packages feature some of today’s most popular building materials. From high-performance windows to the beauty of quartz and granite countertops, you’ll be surprised by what’s included:

BUILDING INCLUSIONS

- Versatile approach and customization
- Design and 3D architecture
- High-touch service experience
- Skilled team, contractor, and supplier network
- Design consultation and plan customization
- Budget and timeline planning
- Building site consultation
- Focus on Energy Certified New Home
- Form-A-Drain tile footing system with crock and sealed sump pump
- Full 8’ high, 8” thick foundation walls with interior brick pattern
- Foundation insulation with stucco coat on the top 12”
- Two (2) vinyl basement windows with area wells connected to drain tile system
- Steel beams and tube columns
- Poured concrete basement floor, garage floor, and front stoop

INTERIOR BUILDING INCLUSIONS

- 96% high-efficiency furnace
- Honeywell media air cleaner
- 16 SEER high-efficiency central air conditioner
- Honeywell T6 Wi-Fi programmable thermostat
- Ventilation for kitchen hood, dryer, and bathrooms
- Water supply lines are CPVC & PEX, drains are PVC
- Power-vented 50-gallon gas water heater system
- Rough-in ¾ bath in basement for future bathroom

- 2”x6”, 16” O.C. exterior wall framing with OSB sheathing
- 2”x6”, 16” O.C. exterior garage wall framing with OSB sheathing
- Tyvek house wrap on exterior house and garage walls to prevent air and water penetration
- Flex wrap on all windows and door sills to prevent air infiltration and sill rot
- Engineered I-Joist floor system with T&G high-performance floor sheathing, nailed and glued
- Engineered roof trusses, 24” O.C. with OSB sheathing
- R-19 bib insulation in walls at framed exterior walls
- 2” closed cell foam at all box sills, excludes garage
- R-50 blown in attic insulation, excludes garage
- Vinyl high-performance single hung windows and patio doors with drywall jambs and wood sill

- NuPath Series Kohler plumbing fixtures, pressure balanced, faucets (select styles and finishes)
- Oasis acrylic tub and shower modules
- Kohler drop-in oval or rectangle vitreous china sinks in bathrooms
- Kohler comfort height elongated toilets
- Sterling by Kohler stainless steel sink in kitchen with Kohler brushed black, brushed nickel, or chrome faucets (select styles)

INTERIOR BUILDING INCLUSIONS CONTINUED

- Kohler pedestal sink in powder room with wide spread black, brushed nickel, or chrome faucet (select styles)
- Garbage disposal with air switch
- Prep water/ice maker line to refrigerator
- Laundry room washer box with hot/cold water
- Dishwasher hookup
- 200-amp electrical service
- Smoke detectors and carbon monoxide detectors
- Electric hook-up for dryer and range/oven
- Structured wiring package
- Choice of knockdown or sand texture on interior walls
- Square or rounded corners on interior walls
- Interior painting on ceilings and walls throughout
- Painted MDF or stained poplar trim and interior doors, variety of styles
- Stained or painted wood sills with apron and drywall return window jambs
- ½ walls with wood cap at stairs, if applicable
- NuPath Series wood hood and select accessories
- Comfort height vanities in all bathrooms
- Select stain and designer paint finishes and select cabinet accessories
- Quality cabinetry in a variety of species and door styles with soft-close hinges and dovetail drawers with full extension, soft-close glides
- NuPath Series quartz/granite countertops at kitchen
- High-definition laminate countertops at laundry room and all bathrooms except powder room
- Framed mirrors above bathroom vanities (excluding powder bathroom)
- Direct vent gas fireplace with fan and logs
- Thin-cut stone veneer fireplace face to mantel with flush Bedford hearthstone and wood mantel
- Schlage levers on doors, choice of style and finish
- Cabinet door and drawer hardware allowance
- Towel ring per sink, towel bar per bathroom (excluding powder room), and toilet paper holder per toilet

- Semi-frameless 5’ sliding clear glass shower door with black, brushed nickel, or chrome frame and hardware
- Appliance allowance (vent, microwave, dishwasher)
- NuPath Series of select luxury vinyl plank or non-grouted luxury vinyl tile flooring per plan
- Carpet allowance
- Light fixture allowance
- Rough and finish cleaning
- Duct cleaning at completion of build

EXTERIOR BUILDING INCLUSIONS

- Superior exterior design consisting of a combination of shape, texture, and color
- Limited lifetime high-definition shingles
- Continuous ridge vent and enamel-baked colored valleys to match shingle color
- Ice and water shield applied on eaves and valleys
- Energy-rated insulated fiberglass exterior doors with deadbolts
- 8’ tall triple-layer insulated steel overhead garage doors
- Two (2) LiftMaster Premium Series ½ HP AC chain drive openers with two (2) transmitters, keyless entry system, and MyQ technology
- James Hardie Hardie® Plank climate-engineered primed lap siding
- MiraTEC trim, window wraps, and corners
- MiraTEC fascia and LP panel soffit
- Exterior caulking
- Exterior painting includes prime and two coats
- Maintenance-free, seamless, aluminum gutters with 4” downspouts
- Thin-cut stone veneer per plan
- Two (2) exterior frost-proof hose bibs
- Two (2) exterior weatherproof GFCI outlets
- Wired front doorbell

PAST PARADE
MODEL

2,935 SQ. FT.

4 BEDROOMS

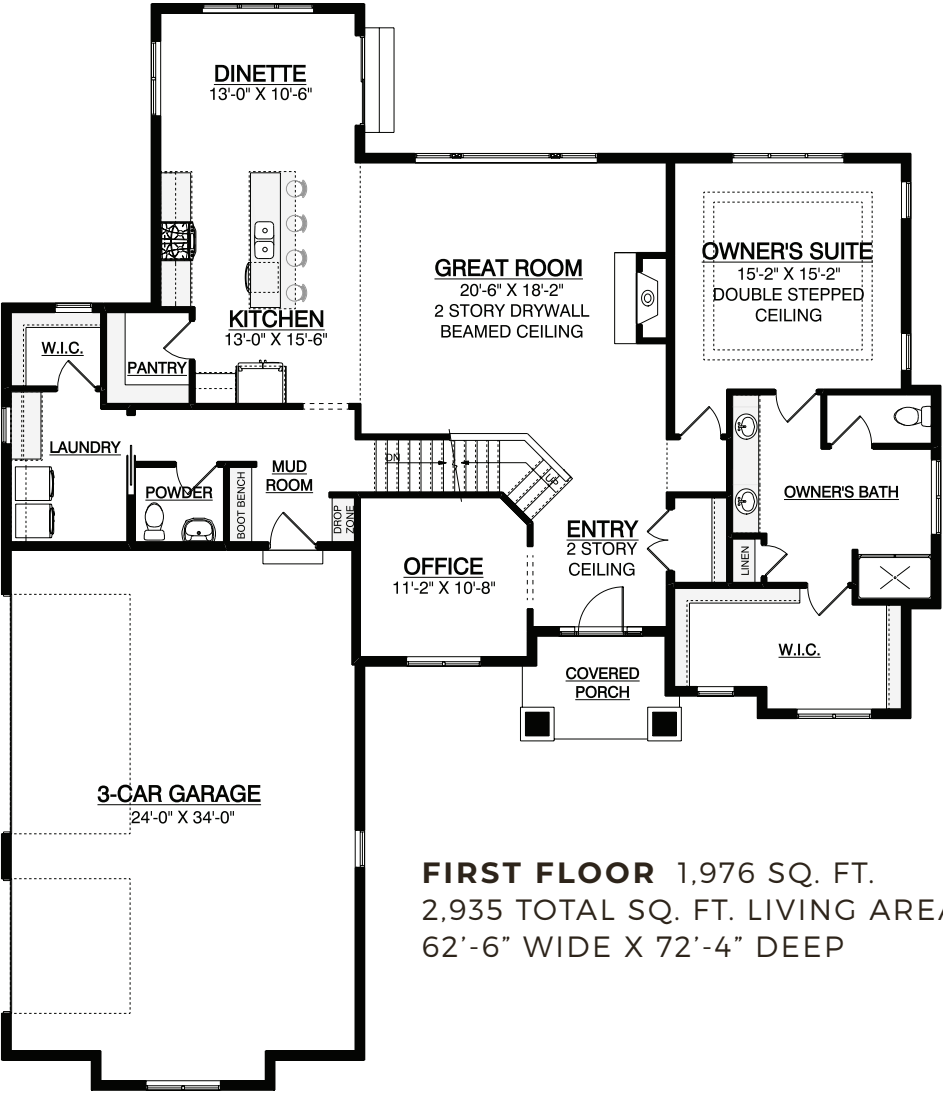
3.5 BATHS

SPACIOUS
OWNER'S SUITE

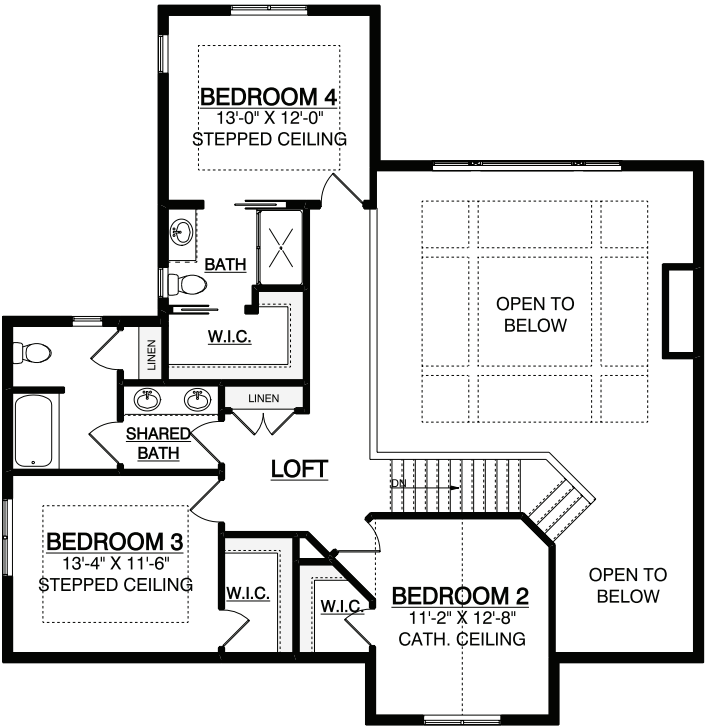
This two-story home makes a remarkable first impression with its board and batten siding, cedar brackets, and tastefully-placed stone. Inside, you'll be greeted by a large great room with a 12' ceiling, stone-to-mantel fireplace, and a wall of windows that bring in tons of natural light.



*ELEVATION PER MODEL



FIRST FLOOR 1,976 SQ. FT.
2,935 TOTAL SQ. FT. LIVING AREA
62'-6" WIDE X 72'-4" DEEP



SECOND FLOOR 959 SQ. FT.

“Espire not only builds a very good home but are true professionals in how they operate their business.”

- Jim

2024 PARADE
MODEL

2,926 SQ. FT.

4 BEDROOMS

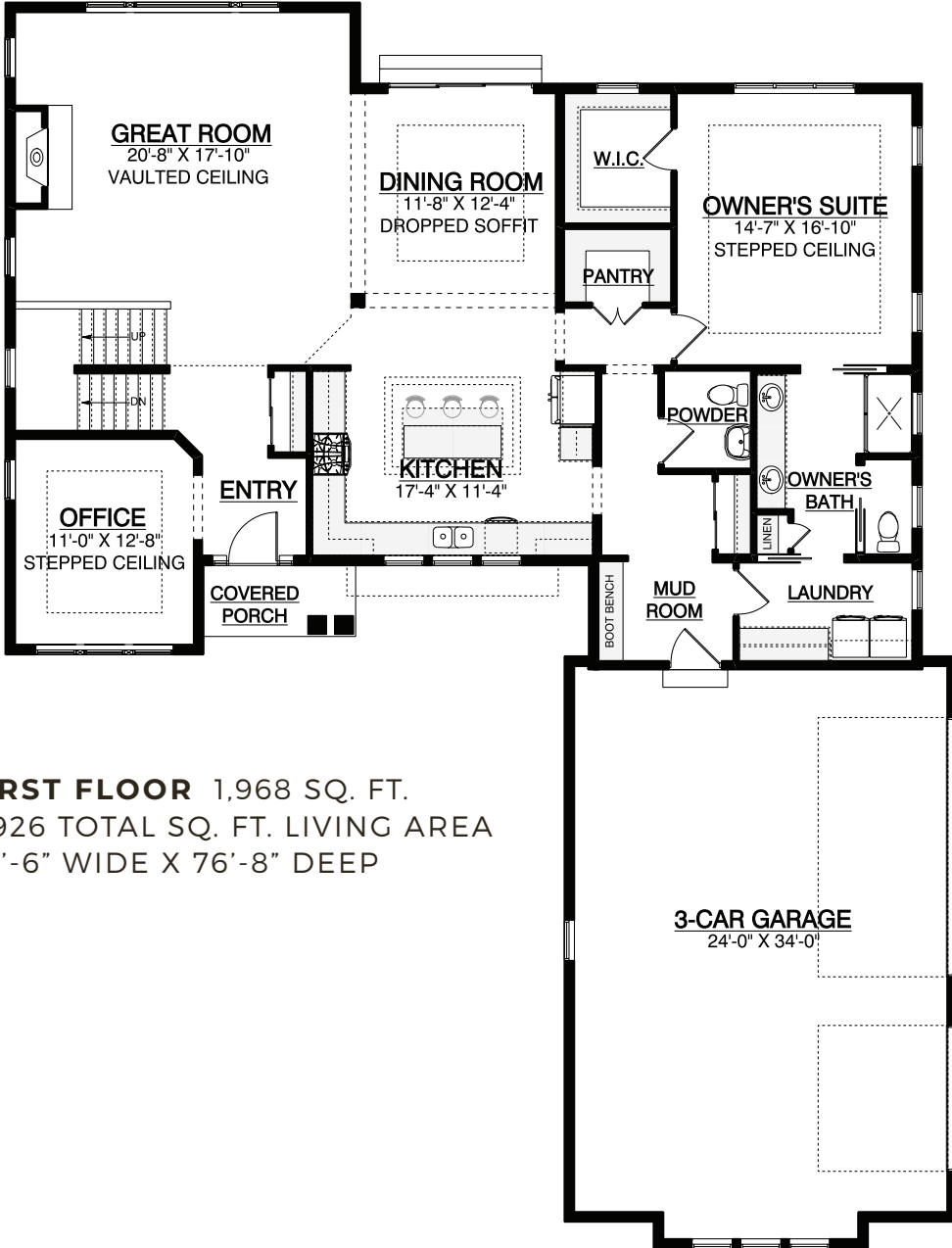
2.5 BATHS

ACTIVE DORMER

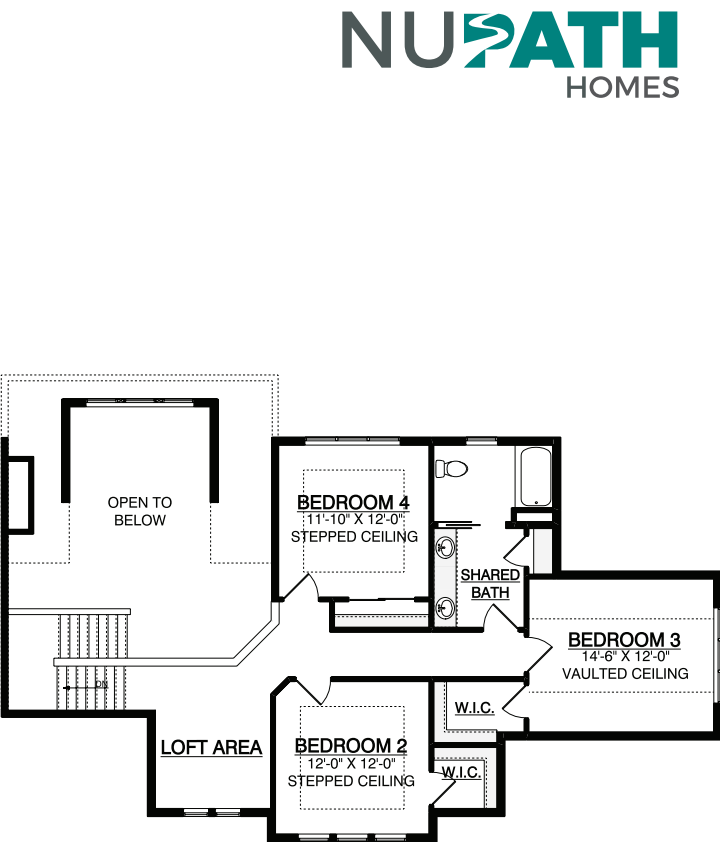
This floor plan is a two-story spin on our popular ranch model, The Hickory. Enjoy time spent cooking and entertaining in The Cassia's tuckaway kitchen featuring a wood-wrapped cabinet hood and quartz backsplash behind the range.



*ELEVATION PER MODEL



FIRST FLOOR 1,968 SQ. FT.
2,926 TOTAL SQ. FT. LIVING AREA
58'-6" WIDE X 76'-8" DEEP



SECOND FLOOR 958 SQ. FT.

THE SILVER MAPLE
TWO-STORY DESIGN

BUILT FOR YOUR
LIFESTYLE

2,870 SQ. FT.

4 BEDROOMS

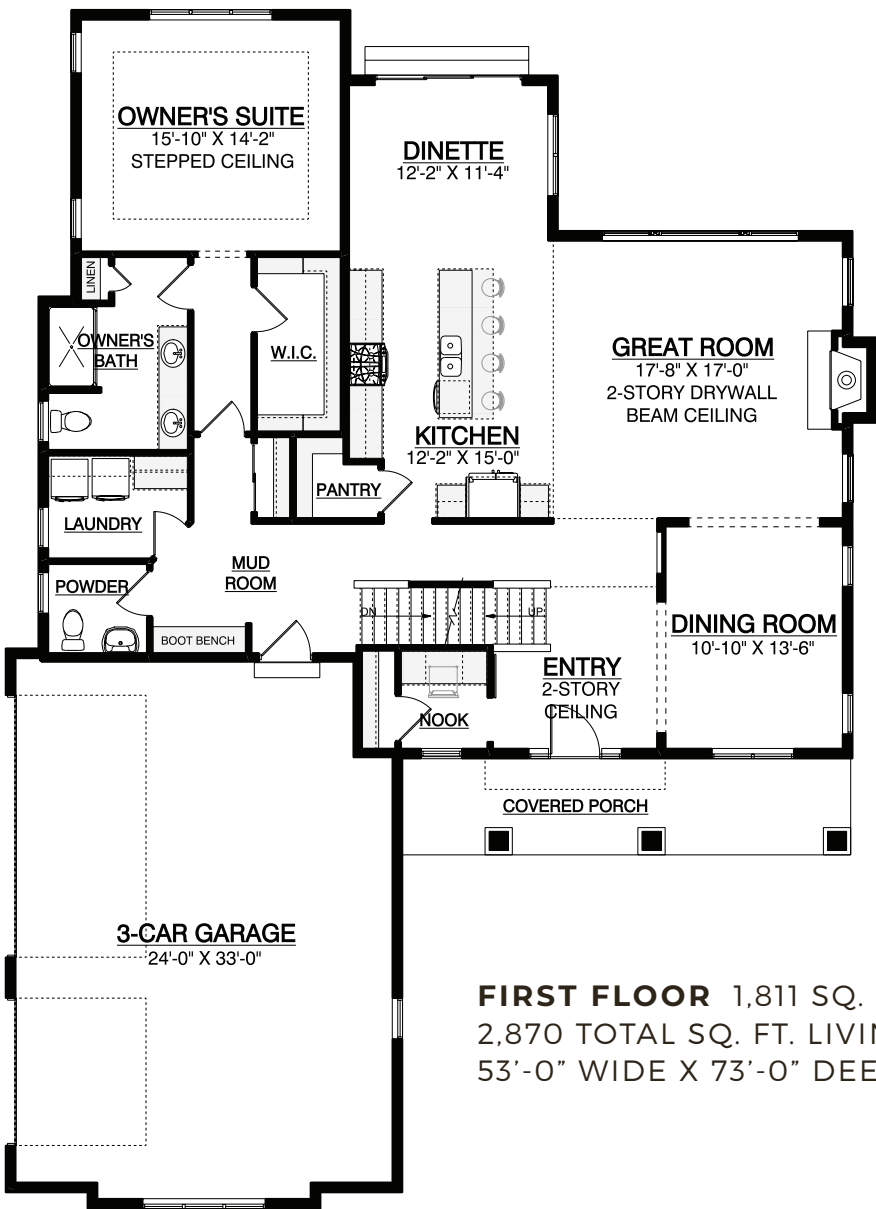
2.5 BATHS

SPACIOUS
KITCHEN

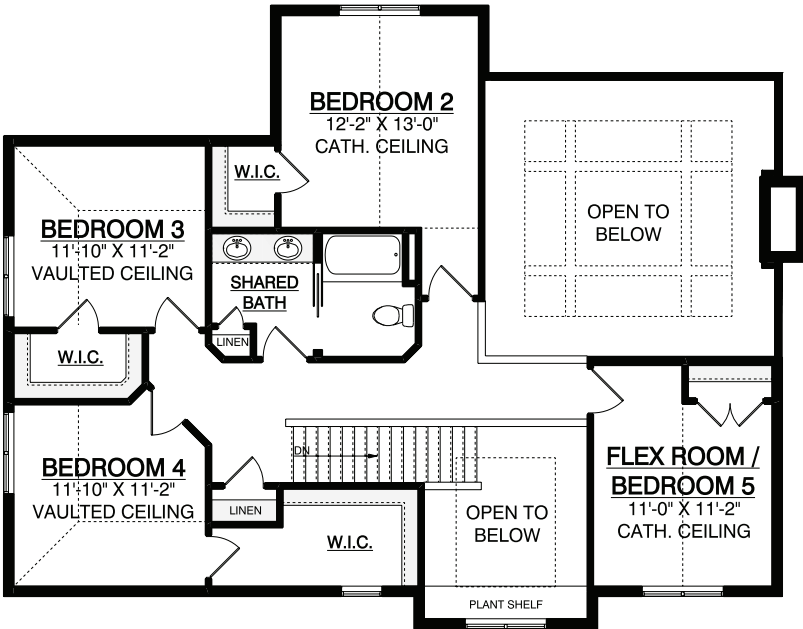
A beautiful family home that makes a great impression upon entry with a stunning two-story foyer. The spacious kitchen features plenty of counter space, while the separate dining room adds to the home's dignified style.



*ELEVATION PER MODEL



FIRST FLOOR 1,811 SQ. FT.
2,870 TOTAL SQ. FT. LIVING AREA
53'-0" WIDE X 73'-0" DEEP



SECOND FLOOR 1,059 SQ. FT.

THE COTTONWOOD

TWO-STORY DESIGN

AWARD-WINNING
PARADE MODEL

2,806 SQ. FT.

4 BEDROOMS

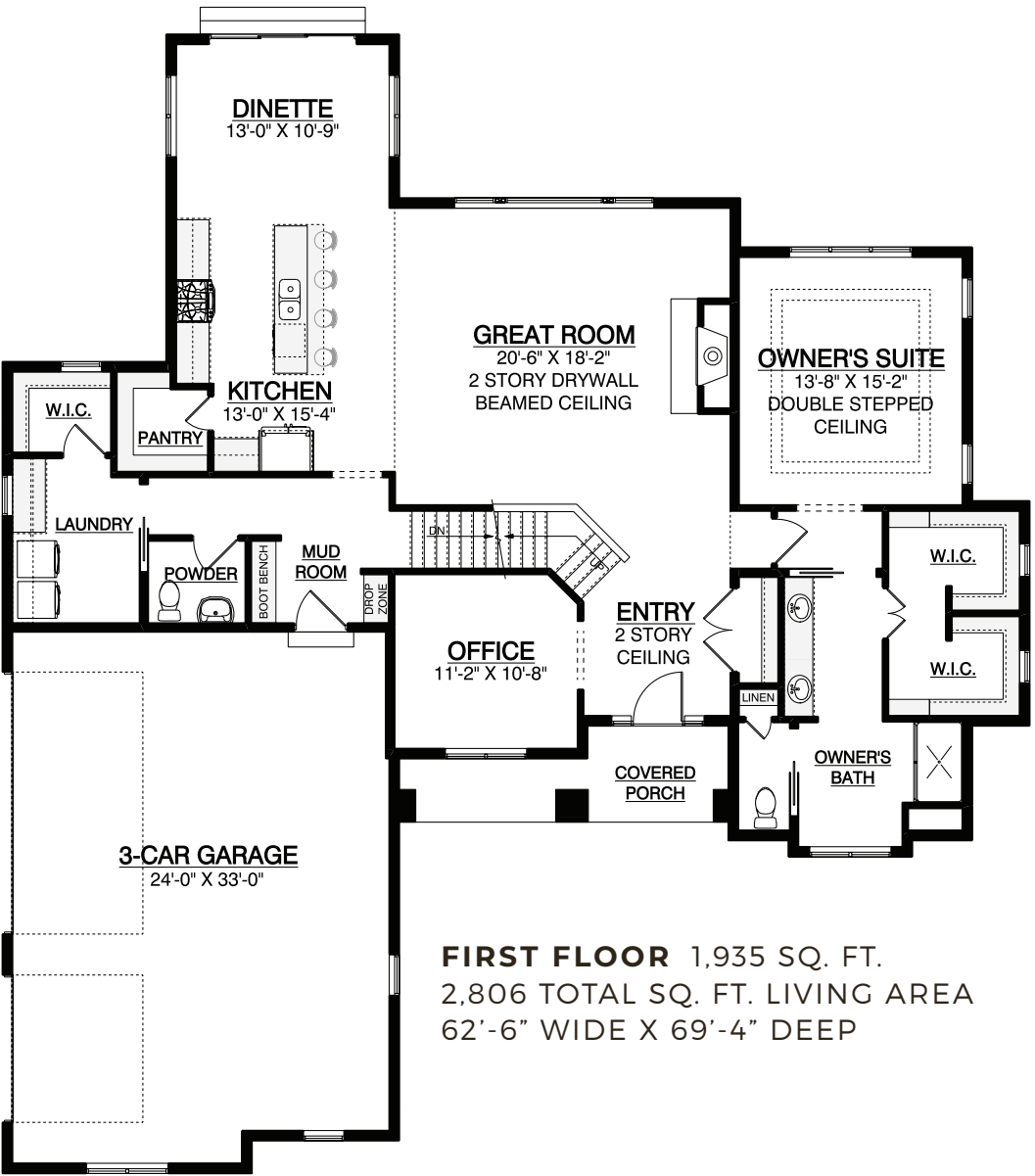
2.5 BATHS

SECOND FLOOR
LOFT

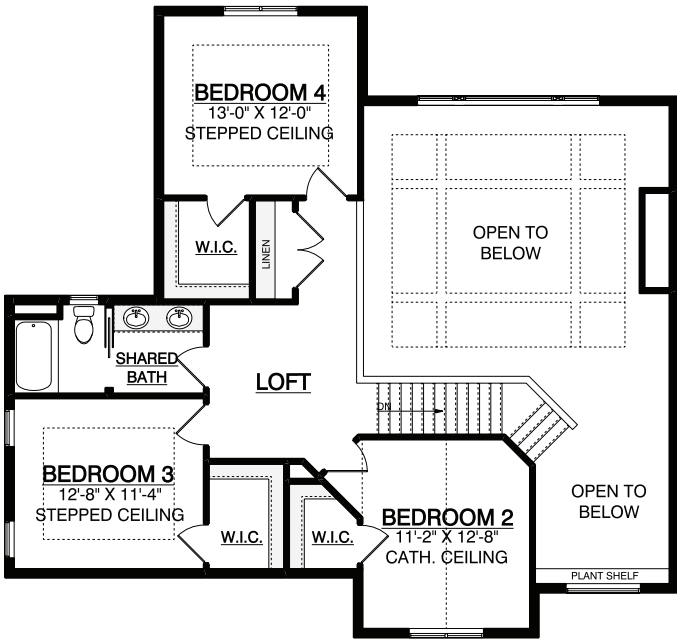
This charming two-story home welcomes you with an open-concept great room that features a beamed ceiling, stone fireplace, and floor-to-ceiling windows to bring natural light throughout the space.



*ELEVATION PER MODEL



FIRST FLOOR 1,935 SQ. FT.
2,806 TOTAL SQ. FT. LIVING AREA
62'-6" WIDE X 69'-4" DEEP



SECOND FLOOR 871 SQ. FT.



THE HEMLOCK
TWO-STORY DESIGN

DELIGHTFUL,
OPEN LAYOUT
CONCEPT

2,508 SQ. FT.

4 BEDROOMS

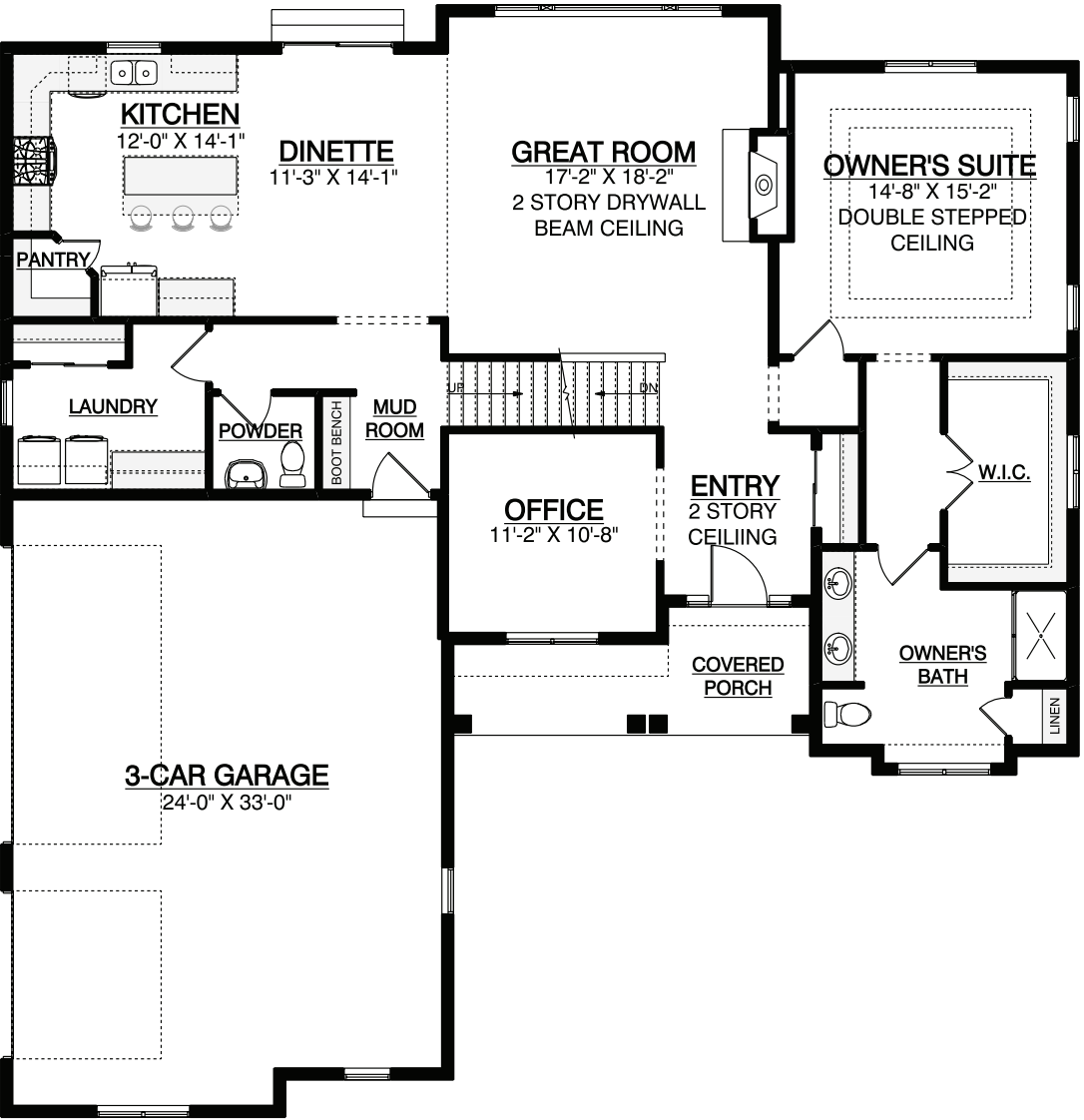
2.5 BATHS

TWO-STORY
ENTRYWAY

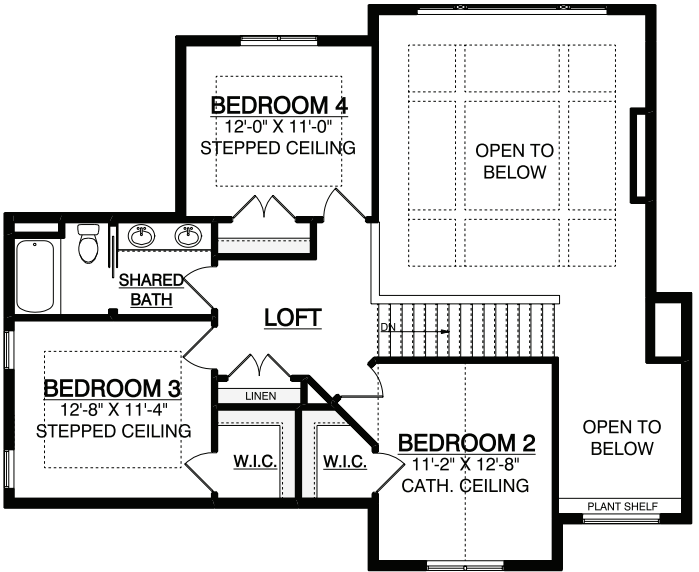
A charming home that makes functionality a priority. The second story loft overlooks the massive great room, which features high-end finishes such as a stone mantle fireplace and a two-story beam ceiling.



*ELEVATION PER MODEL



FIRST FLOOR 1,758 SQ. FT.
2,508 TOTAL SQ. FT. LIVING AREA
57'-6" WIDE X 59'-4" DEEP



SECOND FLOOR 750 SQ. FT.

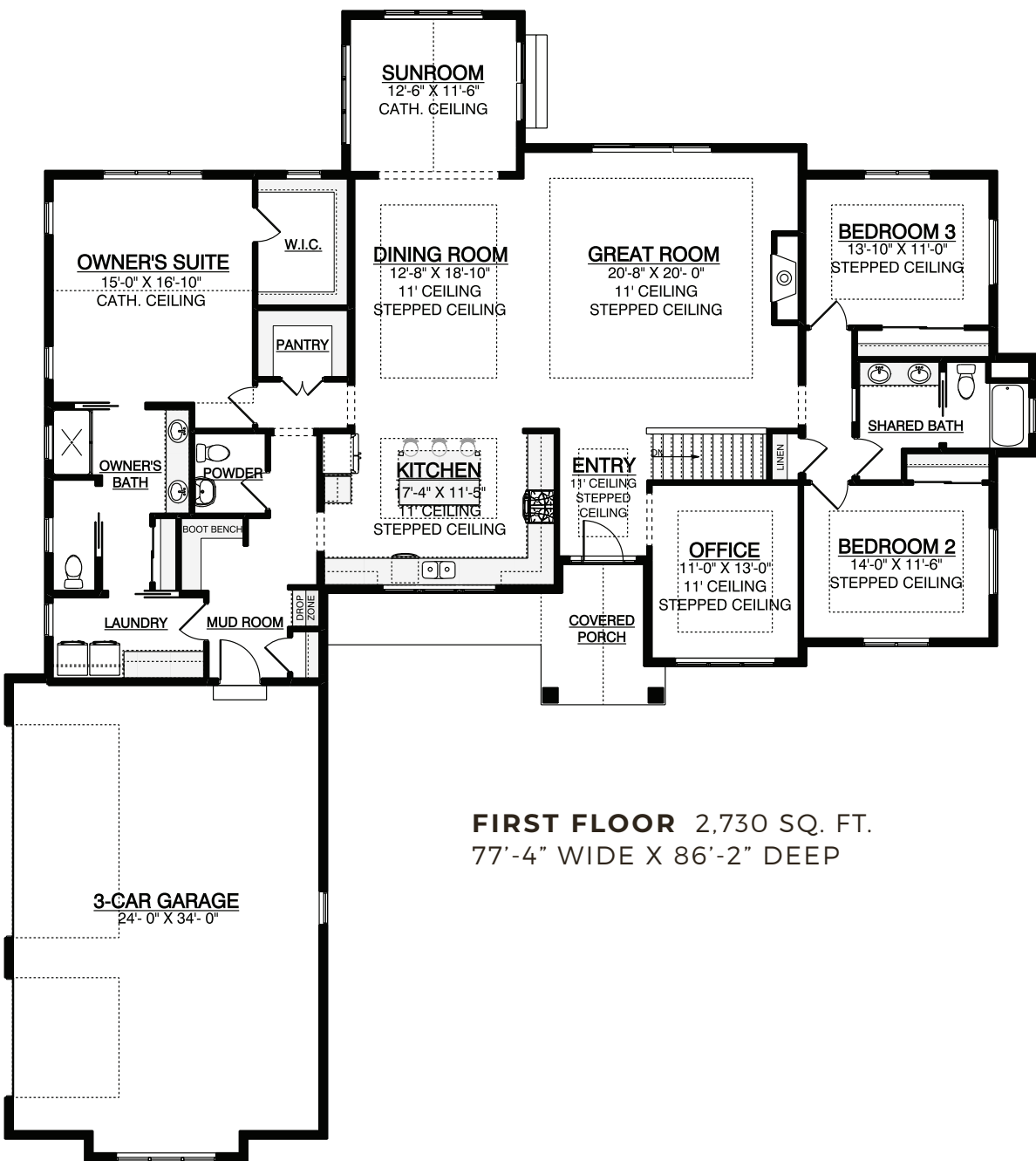
2025 PARADE
MODEL

- 2,730 SQ. FT.
- 3 BEDROOMS
- 2.5 BATHS
- AIRY SUNROOM

A private owner’s suite pairs seamlessly with the adjacent laundry room, adding ease to everyday living. This thoughtful design detail helps The Welsh feel grounded, connected, and made for real life.



*ELEVATION PER MODEL



FIRST FLOOR 2,730 SQ. FT.
77'-4" WIDE X 86'-2" DEEP

2,590 SQ. FT.

4 BEDROOMS

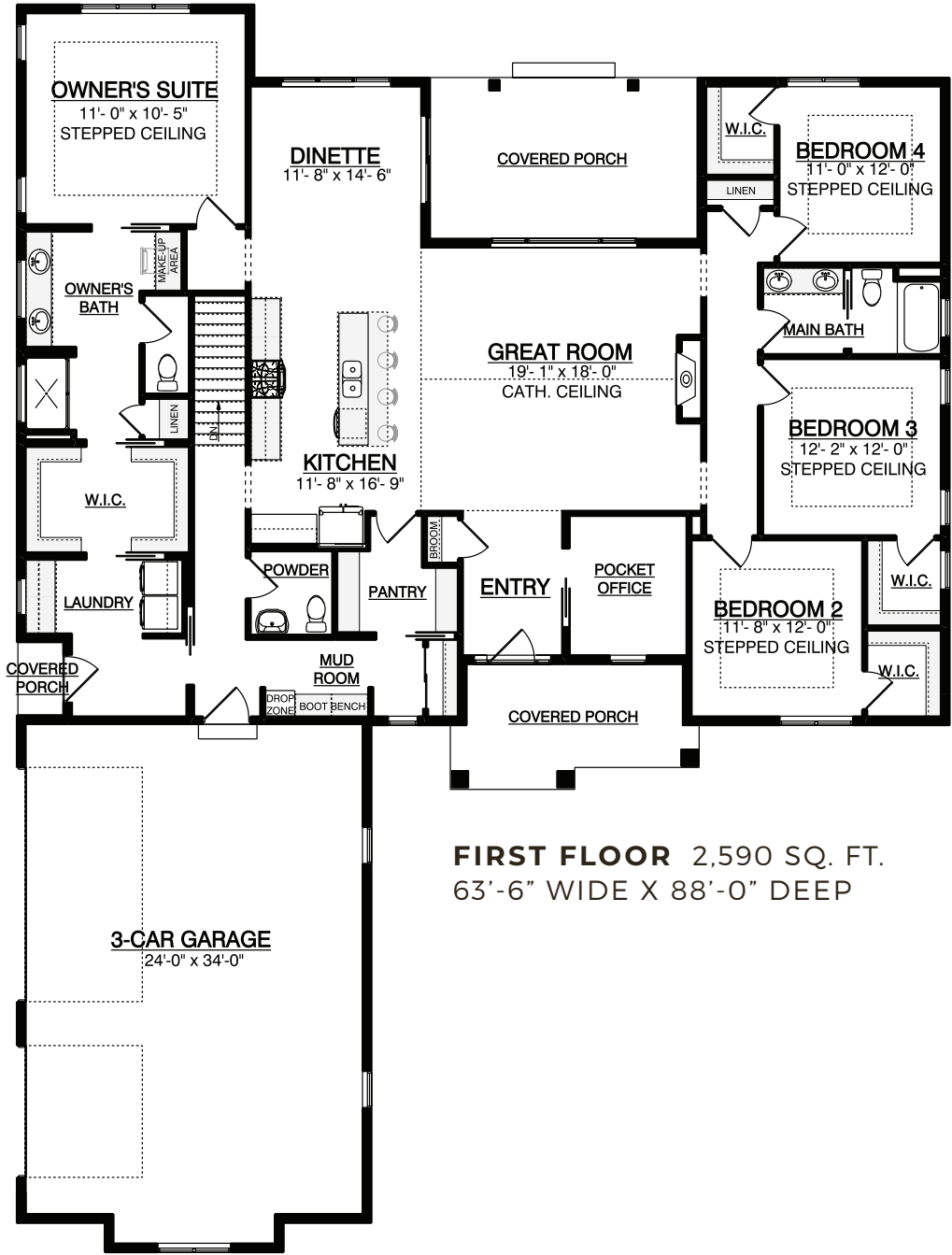
2.5 BATHS

MODEST POCKET
OFFICE

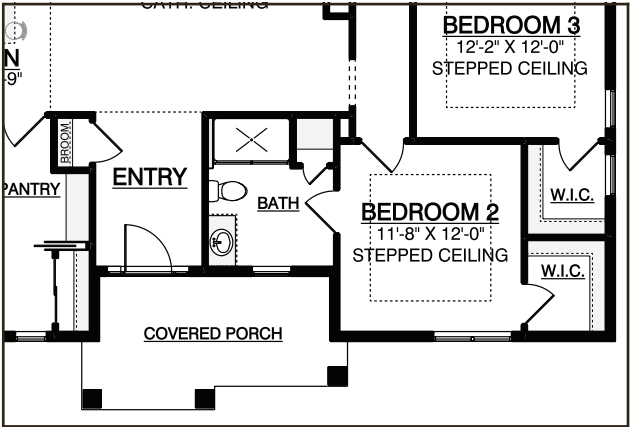
Everything is connected in The Laurel. From the walk-through owner's suite that leads seamlessly to the pantry, to the private hallway that separates the bedrooms, every space flows with intention.



*ELEVATION PER MODEL



FIRST FLOOR 2,590 SQ. FT.
63'-6" WIDE X 88'-0" DEEP



OPTIONAL EN SUITE

THE BEECHWOOD RANCH DESIGN

PAST PARADE
MODEL

2,569 SQ. FT.

3 BEDROOMS

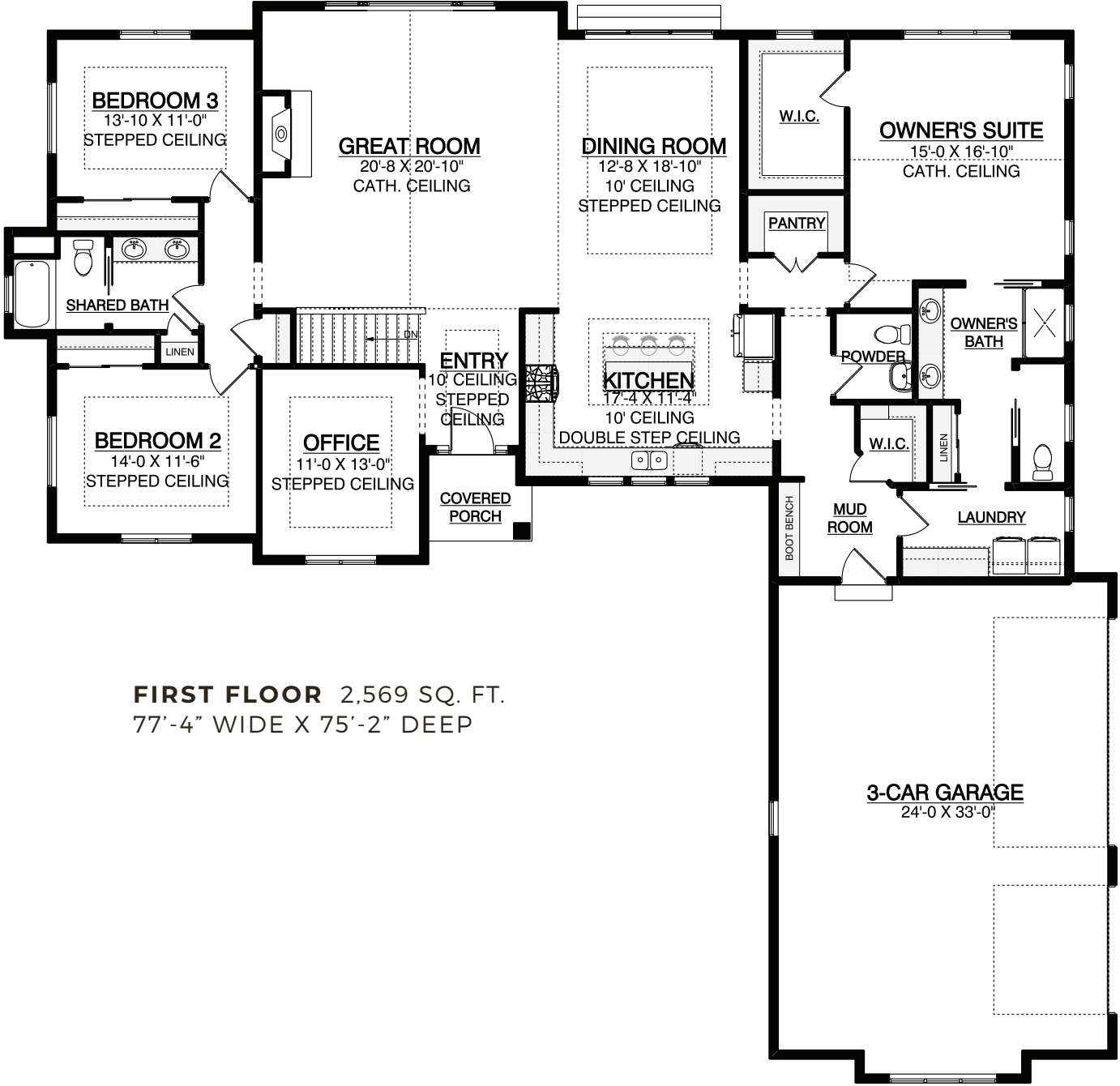
2.5 BATHS

TUCK-AWAY
KITCHEN

Building off the functionality of our popular Hickory design, this charming family home offers additional square footage and a home office! The cathedral ceilings in the great room and owner's bedroom are sure to leave a lasting impression.



*ELEVATION PER MODEL



FIRST FLOOR 2,569 SQ. FT.
77'-4" WIDE X 75'-2" DEEP

NU²PATH
HOMES

THE JASMINE
RANCH DESIGN

SPACIOUS,
OPEN-CONCEPT
FLOOR PLAN

2,444 SQ. FT.

3 BEDROOMS

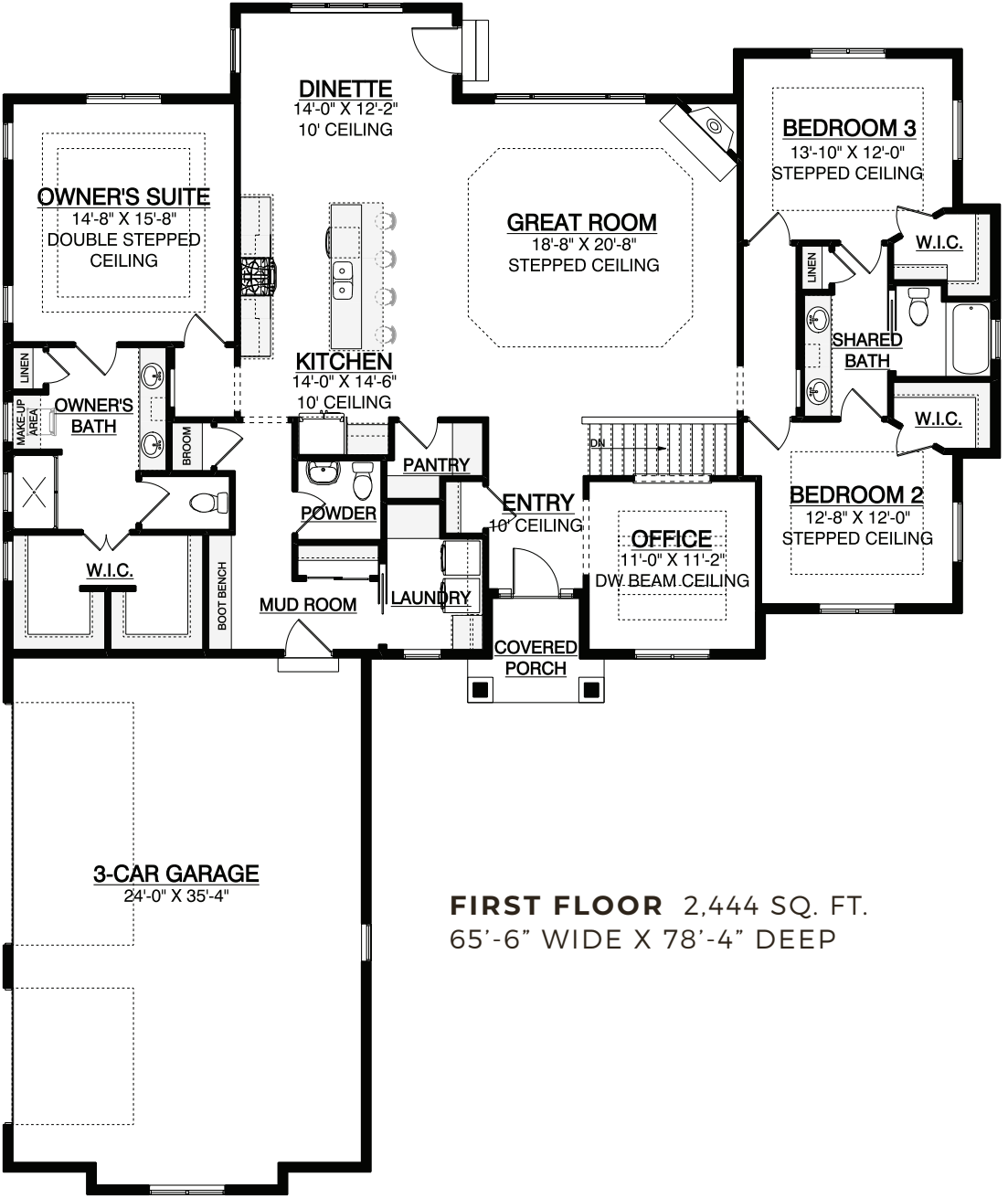
2.5 BATHS

CANTED GARAGE

Focused on open-concept living, this ranch-style home expertly balances functionality and flow. The great room boasts an 11' step ceiling and fireplace, a perfect spot to wind down at the end of the day.



*ELEVATION PER MODEL



FIRST FLOOR 2,444 SQ. FT.
65'-6" WIDE X 78'-4" DEEP



A home with *functional* flow.

The expertly-designed flow of this model makes it clear why it's one of our most popular homes! The Jack and Jill layout of the bathroom perfectly showcases this by providing a functional and spacious area.



THE CATALPA RANCH DESIGN

FUNCTIONAL
OPEN RANCH

2,383 SQ. FT.

3 BEDROOMS

2.5 BATHS

SPACIOUS
OWNER'S SUITE

Improving upon The Cypress by adding even more space, this ranch-style home is equipped to fit your family's needs! Enjoy the large owner's suite, featuring a private bathroom with a double vanity and walk-in closet.



*ELEVATION PER MODEL



"The process has been so easy from start to finish. What they have created here is unbelievable. Espire does a fabulous job of leading you through the process."

- Karen & Bill

THE ROWAN
RANCH DESIGN

WARM &
WELCOMING
RANCH-STYLE
HOME

2,371 SQ. FT.

3 BEDROOMS

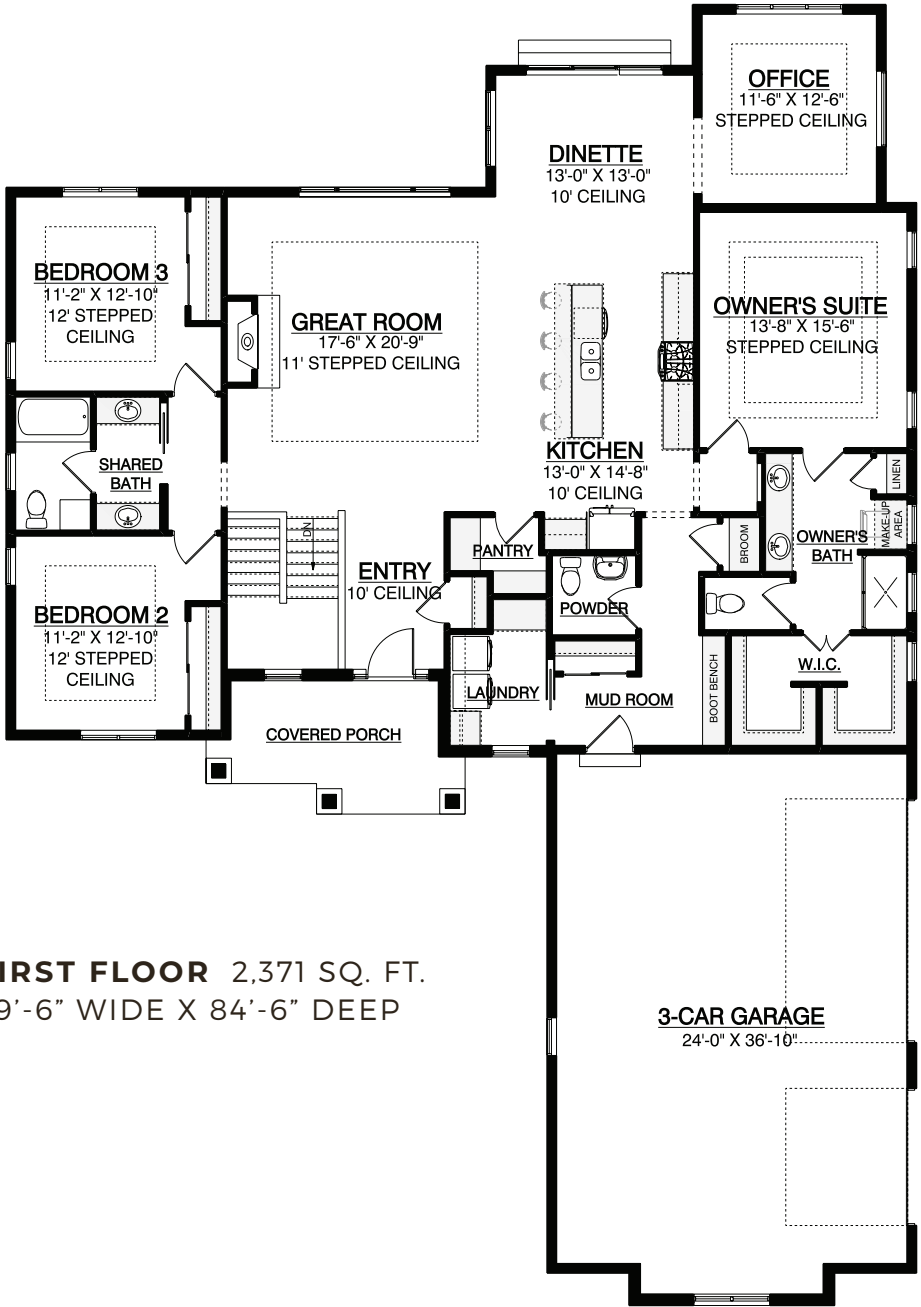
2.5 BATHS

TUCKED-AWAY
HOME OFFICE

This ranch-style home makes the most of its space. The Rowan's private owner's suite is sure to be your favorite place to relax at the end of the day. The luxurious private bathroom features a double vanity, shower, and a his-and-hers walk-in closet.



*ELEVATION PER MODEL



FIRST FLOOR 2,371 SQ. FT.
59'-6" WIDE X 84'-6" DEEP

3-CAR GARAGE
24'-0" X 36'-10"

THE CYPRESS RANCH DESIGN

PRACTICAL,
OPEN-CONCEPT
RANCH

2,343 SQ. FT.

3 BEDROOMS

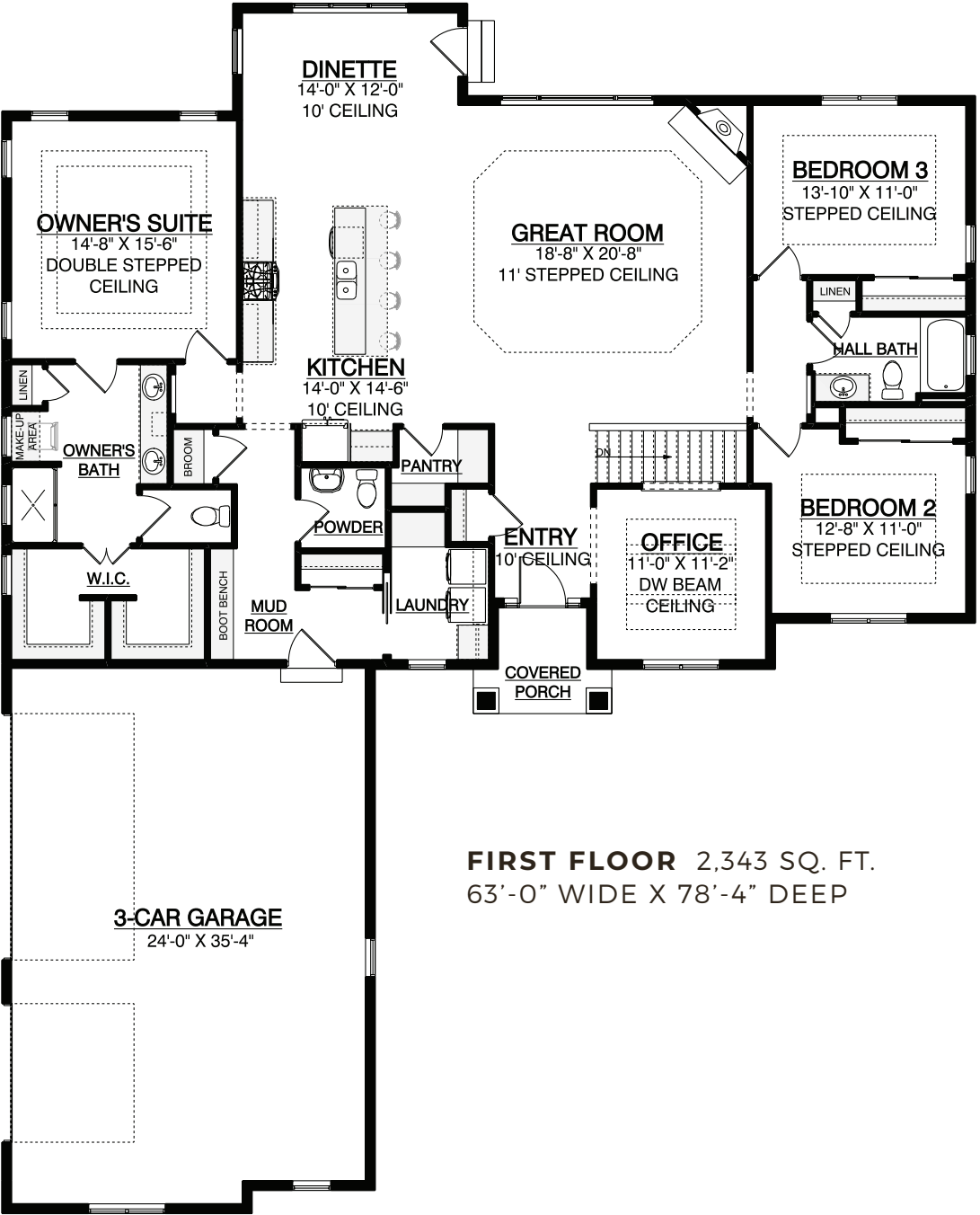
2.5 BATHS

SPACIOUS OWNER'S SUITE

Designed with the modern family in mind, this ranch-style home limits hallways in order to expand the space of each room. The mud room contains a built-in boot bench and drop zone, expanding your storage space to make organization easy!



*ELEVATION PER MODEL





THE HICKORY RANCH DESIGN

AWARD-WINNING
PARADE MODEL

2,281 SQ. FT.

3 BEDROOMS

2.5 BATHS

TUCK-AWAY KITCHEN

In order to suit the needs of the contemporary family, this home uses an open layout to maximize functionality. The large great room flows seamlessly into the dining room and kitchen, which boasts ample counter space and a stylish cooking island.



*ELEVATION PER MODEL



FIRST FLOOR 2,281 SQ. FT.
72'-0" WIDE X 75'-8" DEEP



Your cozy new cooking space.

This large kitchen is tucked away at the front of the house, allowing you to enjoy some privacy while trying out recipes. Ample cabinets and counter space also help make this kitchen ideal for any cook!



THE PINE RIDGE
RANCH DESIGN

PAST PARADE
MODEL

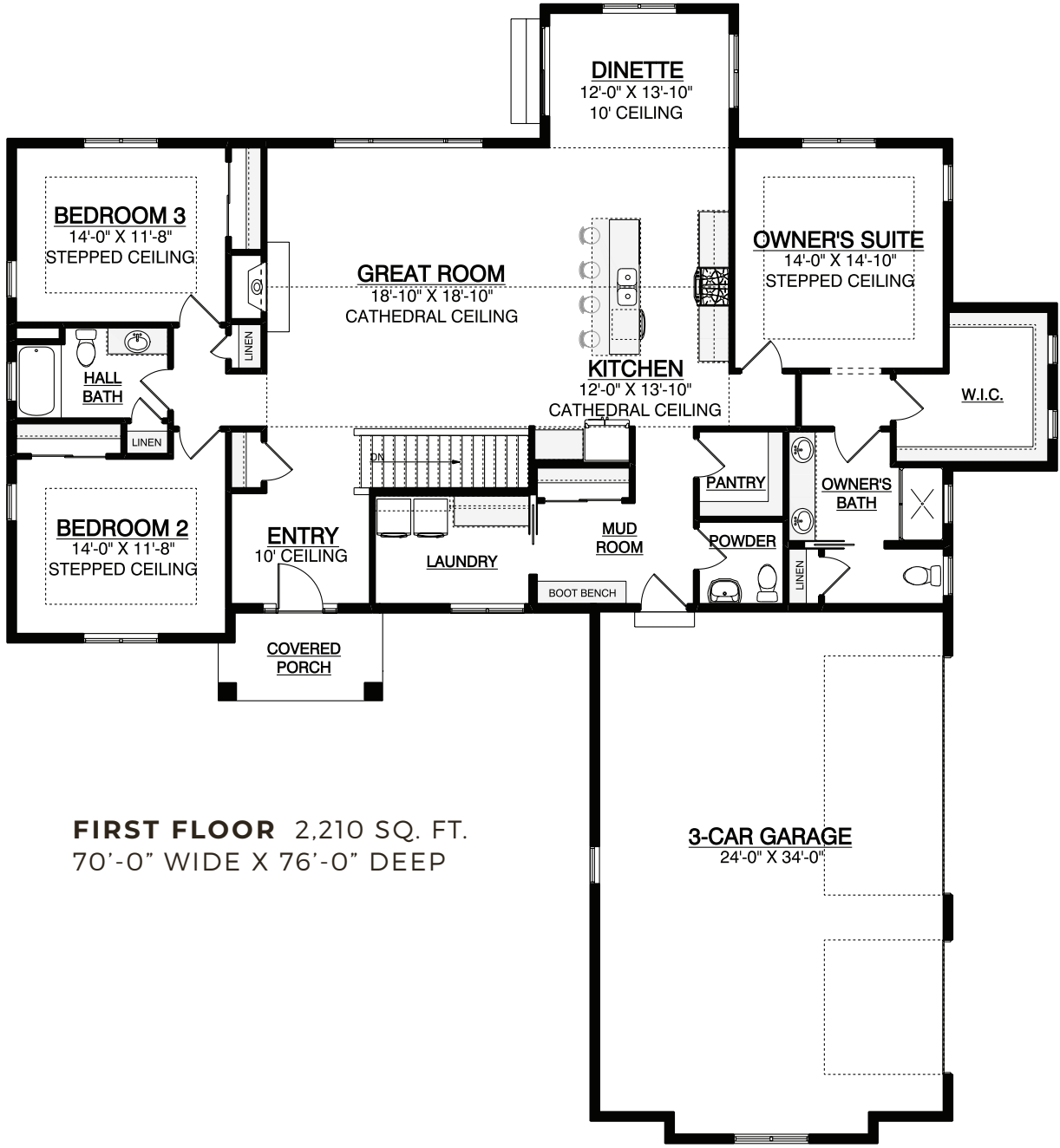
2,210 SQ. FT.

3 BEDROOMS

2.5 BATHS

OPEN-CONCEPT
GREAT ROOM

Building off one of our original plans, this open-concept home adds square footage to increase the overall functionality of the space. The open-concept great room brings in natural light, connected to the kitchen by an impressive wood-beamed cathedral ceiling.



FIRST FLOOR 2,210 SQ. FT.
70'-0" WIDE X 76'-0" DEEP

3-CAR GARAGE
24'-0" X 34'-0"

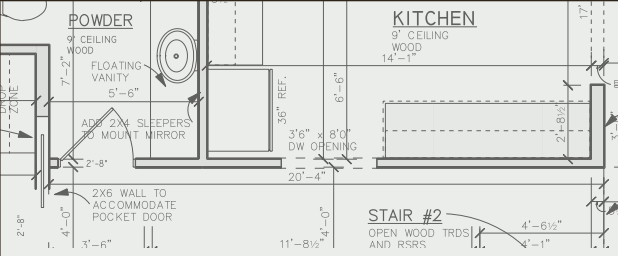
Begin with *your vision*. Renovations Group makes it *home*.

Remodeling can mean a lot of things to a lot of different people. At Renovations Group, we have redesigned mudrooms and we have overhauled entire homes. But no matter the project we understand one thing – a vision must pair with execution. Starting strong in the design process, planning for the complex construction needs of remodeling, and employing a team of talented contractors and designers, our design/build team will keep you involved and informed throughout each step of the process.

Award-winning Designs

Owner-assisted Remodeling

Expansive & Customizable Selections



A Unique *Hands-on* Experience.

For the homeowner who enjoys a hands-on experience, owner-assisted remodeling offers our clients a unique opportunity to complete parts of the remodeling project themselves.

Together, we'll determine the labor or products you can provide, and we'll handle the rest.

You'll experience the personal satisfaction of participation and accomplishment while realizing true cost savings.





Our projects may win awards, but our people win over the trust and gratitude of the clients we serve. At Renovations Group, our experienced, award-winning design team takes the time to clearly understand the specific needs and intended use of your space... and that makes all the difference.



If you're like most homeowners, your kitchen and bathroom are two of the most frequently used rooms in your home. A smartly designed remodel from Renovations Group can transform your kitchen or bathroom into a space that truly fits your family. Get the functionality you need and a stunning design you deserve with a unique-to-you renovation!



Maybe your home's lower level was unfinished when you moved in. Or maybe it is finished, but the style and setup no longer serve you. Your lower level should be the ideal spot in your home to kick back, relax, entertain guests, and have fun with your family. If that's not the case, it's time for a remodel. Renovations Group can create a finished lower level that gives you the beautiful space you want for recreation and relaxation.





CUSTOM
LUXURY HOMES



NUPATH
HOMES

CUSTOMIZABLE
MODEL HOMES



RENOVATIONS
GROUP

DESIGN/BUILD
REMODELING

Espire YOUR HOME FOR BUILDING **HOME.**

OUR HOME 530 Hartbrook Drive, Hartland, WI 53029 **WEB** EspireHomes.com

ESPIRE | NUPATH 262-746-2000

RENOVATIONS GROUP 262-821-1100



focus on energy®

Partnering with Wisconsin utilities