



# THE ACACIA I AT FOUR WINDS WEST

**MODERN  
LIFESTYLE  
RANCH**



**2,756 SQ. FT. | 3 BEDROOMS | 2.5 BATHS | THREE-SEASON ROOM | RANCH**

The Acacia I model is the perfect ranch-style home for today's modern lifestyle. Built with an expansive great room featuring dramatic, 12-foot beamed ceilings and a luxurious gourmet kitchen with attached dinette, this home offers plenty of family space.

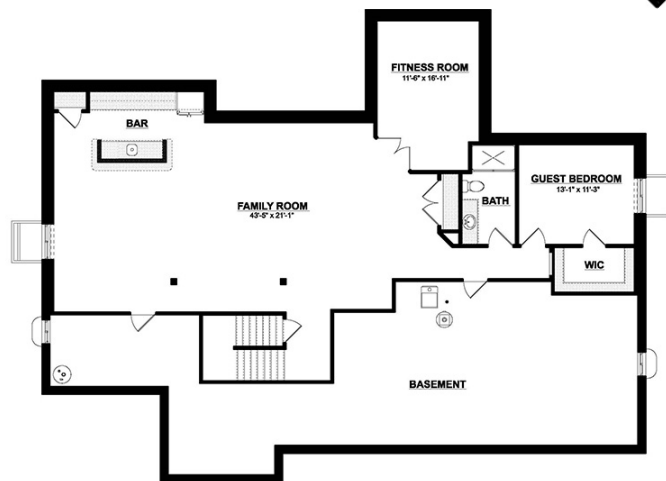
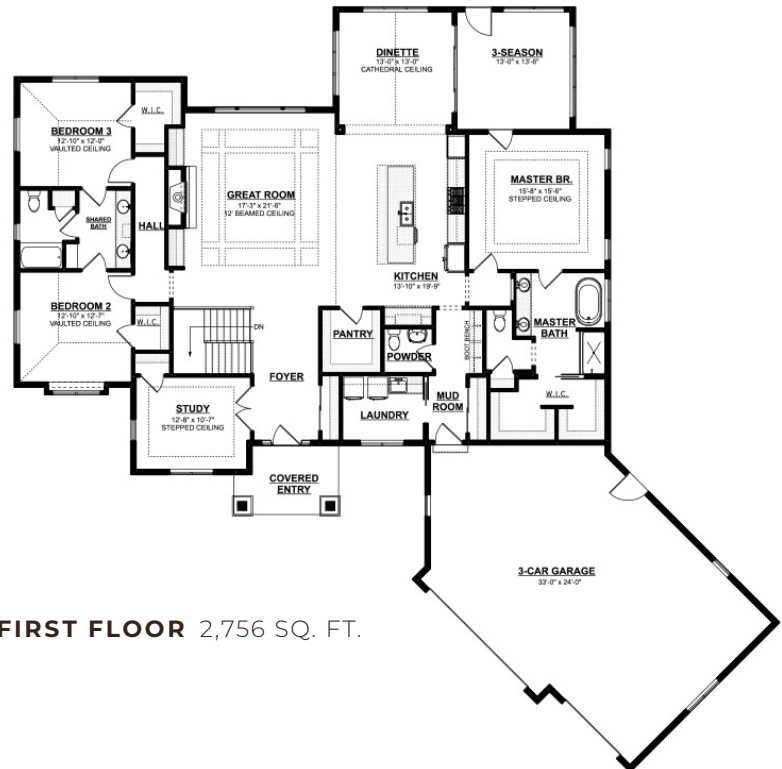
Enjoy a spacious master suite, complete with divided walk-in closets. The master bath contains a freestanding tub and spa-like shower. The remaining two bedrooms share a spacious bathroom. The three-season room offers access to the master bedroom and dinette. This home has ample storage throughout, including a walk-in closet and a mudroom with cubbies.

2,756 SQ. FT. | 3 BEDROOMS | 2.5 BATHS | THREE-SEASON ROOM | RANCH

At Espire, our goal is to help families find the perfect design, budget, and plan for their home. Espire Homes is our signature division of custom luxury homes, featuring high-end materials and finishes. Forget the one-size-fits-all approach to construction. Our flexible, comprehensive approach allows you to scale "Home" to what's right for you.

## STANDARD FEATURES

- Versatile approach and customization
- Design and 3D architecture
- High-touch service experience
- Skilled team, contractor, and supplier network
- Design consultation and plan customization
- Budget and timeline planning
- Building site consultation
- Focus on Energy certified home
- Espire Series quartz/granite kitchen countertops
- Superior exterior design consisting of combination of shape, texture, and color
- Limited lifetime high definition shingles
- James Hardie Hardieplank climate engineered primed lap siding



**Espire** YOUR HOME FOR BUILDING HOME.



**OUR HOME** 530 Hartbrook Drive, Hartland, WI 53029 **WEB** [EspireHomes.com](http://EspireHomes.com) **PHONE** 262-746-2000

