

THE BEECHWOOD

AT TWIN PINE FARM

NU**PATH**
HOMES

2022 PARADE
OF HOMES MODEL



2,571 SQ. FT. | 3 BEDROOMS | 2.5 BATHS | TUCK-AWAY KITCHEN | RANCH

The Beechwood is inspired by our popular Hickory design. This home features a spacious layout that has been meticulously crafted to make the most of every inch. The footprint of the home expands from its predecessor to 2,571 square feet.

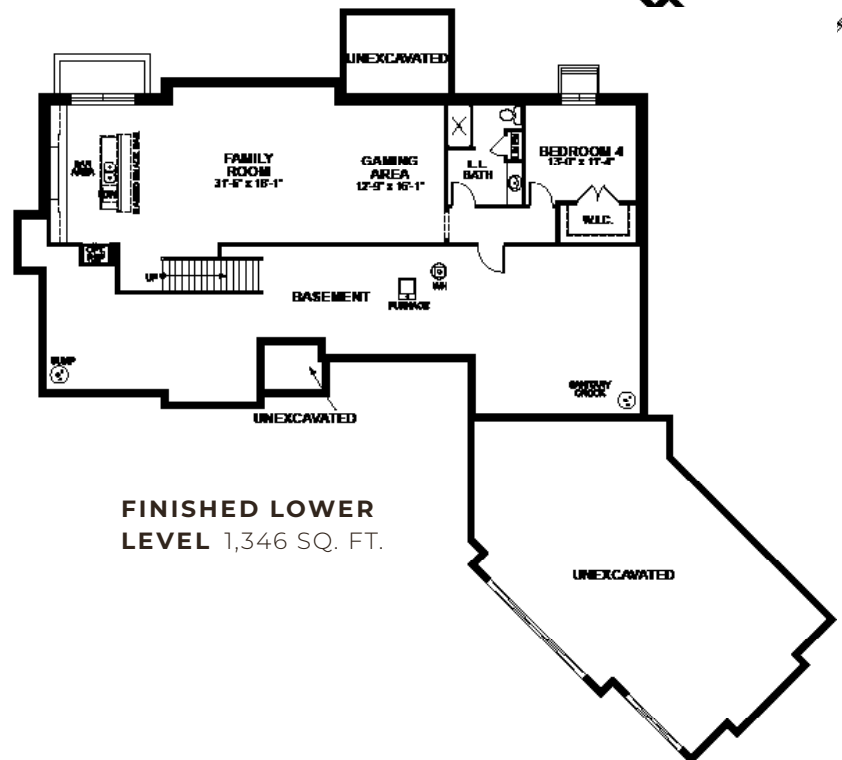
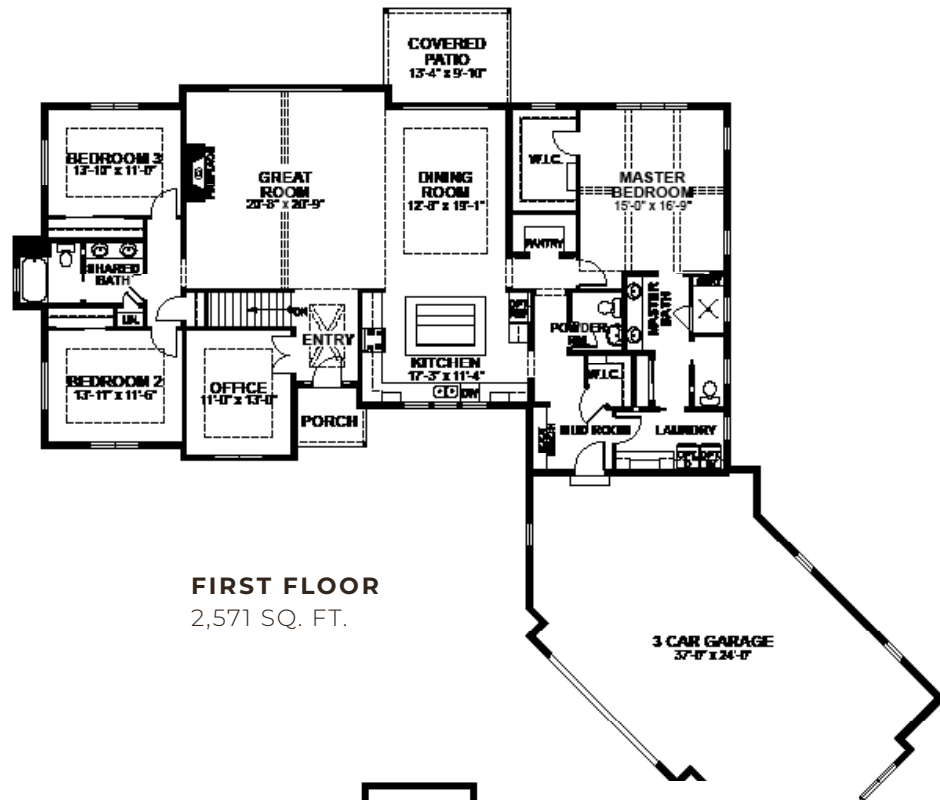
Step into the foyer to find a dedicated office space — perfect for working from home! Ahead, you'll find an open great room and with cathedral ceiling and tall windows. This home stars a large kitchen tucked away at the front of the house! The spacious master bedroom now boasts a larger walk-in closet. The sharable master bathroom features a dual-sink vanity and a private water closet, plus access to the laundry room.

2,571 SQ. FT. | 3 BEDROOMS | 2.5 BATHS | TUCK-AWAY KITCHEN | RANCH

At Espire, our goal is to help families find the perfect design, budget, and plan for their home. Our NuPath Homes division offers a beautiful line of fully-customizable model home plans offered at a unique price point. Forget the one-size-fits-all approach to construction. Let's find the right path for your home together.

STANDARD FEATURES

- Versatile approach and customization
- Design and 3D architecture
- High-touch service experience
- Skilled team, contractor, and supplier network
- Design consultation and plan customization
- Budget and timeline planning
- Building site consultation
- Focus on Energy certified home
- NuPath Series quartz/granite kitchen countertops
- Superior exterior design consisting of a combination of shape, texture, and color
- Limited lifetime high definition shingles
- James Hardie Hardieplank climate engineered primed lap siding



Espire YOUR HOME FOR BUILDING HOME.

NUPATH
HOMES

OUR HOME 530 Hartbrook Drive, Hartland, WI 53029 **WEB** EspireHomes.com **PHONE** 262-746-2000

