



THE BIRCH

AT SWAN VIEW FARMS

2021
PARADE
OF HOMES
MODEL



3,685 SQ. FT. | 3 BEDROOMS | 3.5 BATHS | LUXURY MASTER SUITE | RANCH

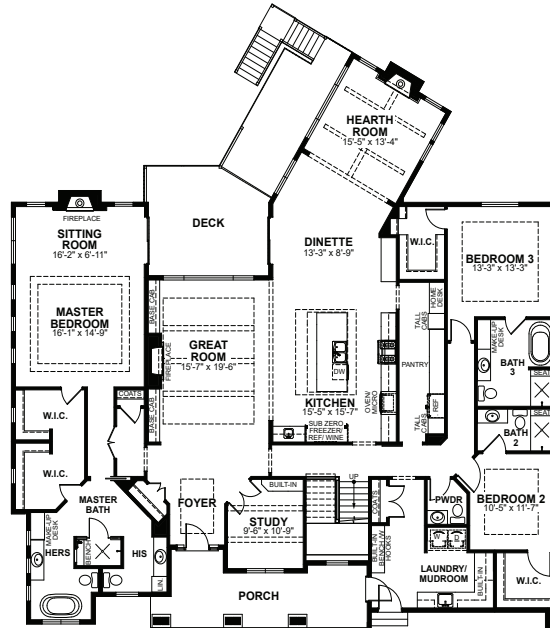
The Birch is a stunning split-bedroom ranch that makes the most of every room. You'll love the soaring cathedral ceilings throughout the main level. At the rear of the house, an inviting hearth room opens to the back deck.

A highlight of The Birch is a functional gourmet kitchen with a large island. Tucked behind the kitchen's main wall is a roomy walk-through pantry. Another great feature is the oversized master suite, featuring a seating area and a grand fireplace. A distinctive his and hers master bath completes this luxurious retreat. Wood-wrapped beams, plentiful built-in storage, and spacious walk-in closets are just a few of the surprises this smartly-designed family home has to offer.

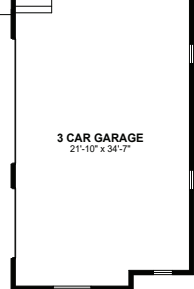
At Espire, our goal is to help families find the perfect design, budget, and plan for their home. Espire Homes is our signature division of custom luxury homes featuring high-end materials and finishes. Forget the one-size-fits-all approach to construction. Our flexible, comprehensive approach allows you to scale "Home" to what's right for you.

STANDARD FEATURES

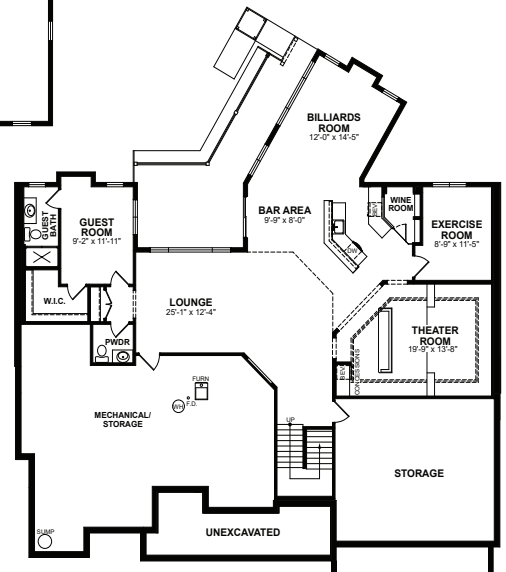
- Versatile approach and customization
- Design and 3D architecture
- High-touch service experience
- Skilled team, contractor, and supplier network
- Design consultation and plan customization
- Budget and timeline planning
- Building site consultation
- Focus on Energy certified home
- Espire Series quartz/ granite kitchen countertops
- Superior exterior design consisting of combination of shape, texture, and color
- Limited lifetime high definition shingles
- James Hardie Hardieplank climate engineered primed lap siding



FIRST FLOOR
3,685 SQ. FT.



3 CAR GARAGE
21'-10" x 34'-7"



FINISHED LOWER LEVEL
1,961 SQ. FT.

