

# THE COTTONWOOD

AT AERO PARK

**NU**PATH  
HOMES

2020 PARADE OF  
HOMES MODEL



**2,806 SQ. FT. | 4 BEDROOMS | 2.5 BATHS | LOFT SPACE | TWO-STORY**

Discover the Cottonwood, a charming and welcoming two-story home. The open-concept living space of this home is filled with expansive windows offering an array of natural sunlight. The kitchen features a cooking island with a flush snack bar for seating. The two-story great room includes drywall beams, floor-to-ceiling windows, and a direct vent gas fireplace surrounded by stone. Expanded entertaining space can be found in the finished lower level complete with a family room, home bar, and guest bedroom with a full bathroom.

The master suite, designed for relaxation, includes an intricate 10' shiplap ceiling. The master bathroom provides dual vanities, a freestanding tub, and a ceramic shower with seat.

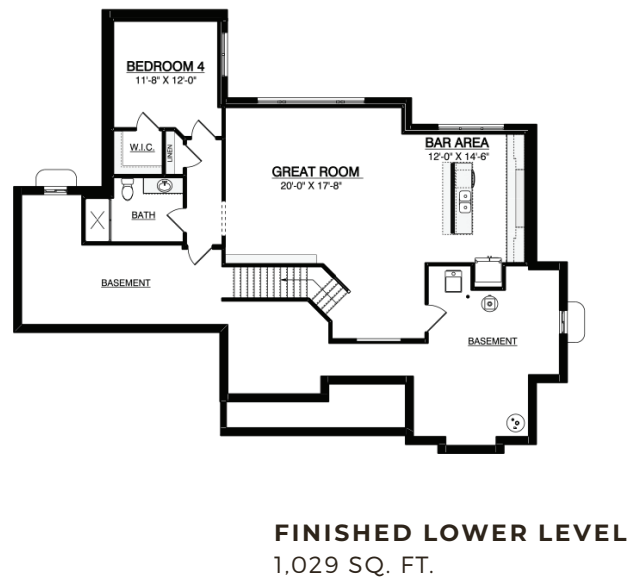
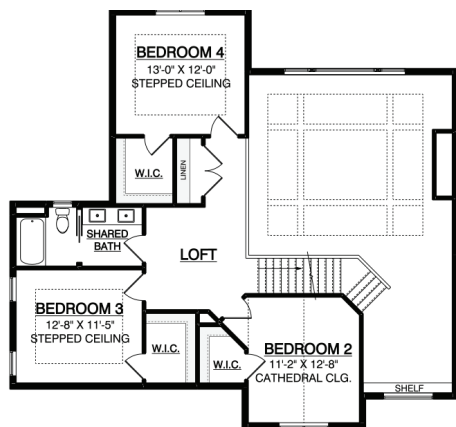
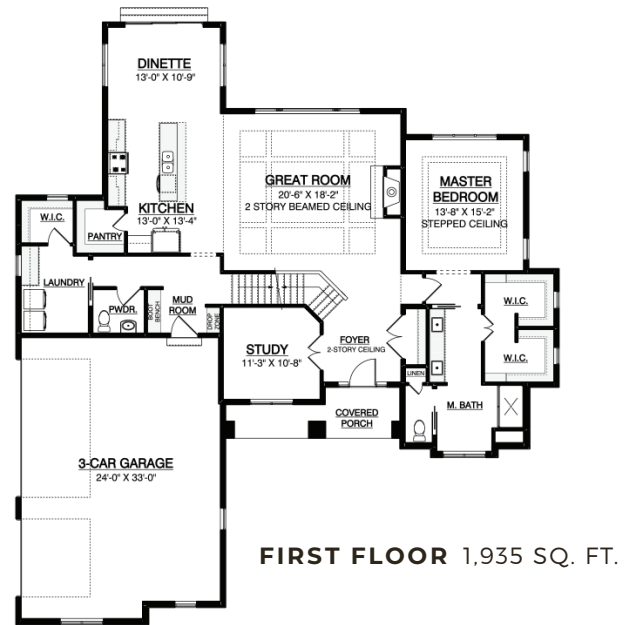


**THE COTTONWOOD | 2,806 SQ. FT. | 4 BEDROOMS | 2.5 BATHS | TWO-STORY**

At Espire, our goal is to help families find the perfect design, budget, and plan for their home. Our NuPath Homes division offers a beautiful line of fully-customizable model home plans offered at a unique price point. Forget the one-size-fits-all approach to construction. Let's find the right path for your home together.

**STANDARD FEATURES**

- Versatile approach and customization
- Design and 3D architecture
- High-touch service experience
- Skilled team, contractor, and supplier network
- Design consultation and plan customization
- Budget and timeline planning
- Building site consultation
- Focus on Energy certified home
- NuPath Series quartz/granite kitchen countertops
- Superior exterior design consisting of a combination of shape, texture, and color
- Limited lifetime high definition shingles
- James Hardie Hardieplank climate engineered primed lap siding



**Esquire** YOUR HOME FOR BUILDING HOME.



**OUR HOME** 530 Hartbrook Drive, Hartland, WI 53029 **WEB** NuPathHomes.com **PHONE** 262-746-2000

