

THE CYPRESS II

AT THOMSON HOLLOW

NU**PATH**
HOMES

FAMILY-FRIENDLY,
FUNCTIONAL
RANCH



2,383 SQ. FT. | 3 BEDROOMS | 2.5 BATHS | SPACIOUS MASTER SUITE | RANCH

Everything you love about The Cypress I, with a few fun updates! Meet The Cypress II: an open-concept split ranch that's functional and perfect for families.

The Cypress II adds 40 square feet to the floor plan, designed with minimal hallways. The kitchen features a large island and walk-in pantry with plentiful storage. The laundry now includes a desk area, and the separate mudroom has a built-in boot bench and drop zone. The redesigned master suite features a sumptuous master bath and abundant closet space. New exterior options let you make this home your own!

**VISIT THE CYPRESS II
SATURDAYS & SUNDAYS
FROM 12PM-4PM**

MODEL ADDRESS:

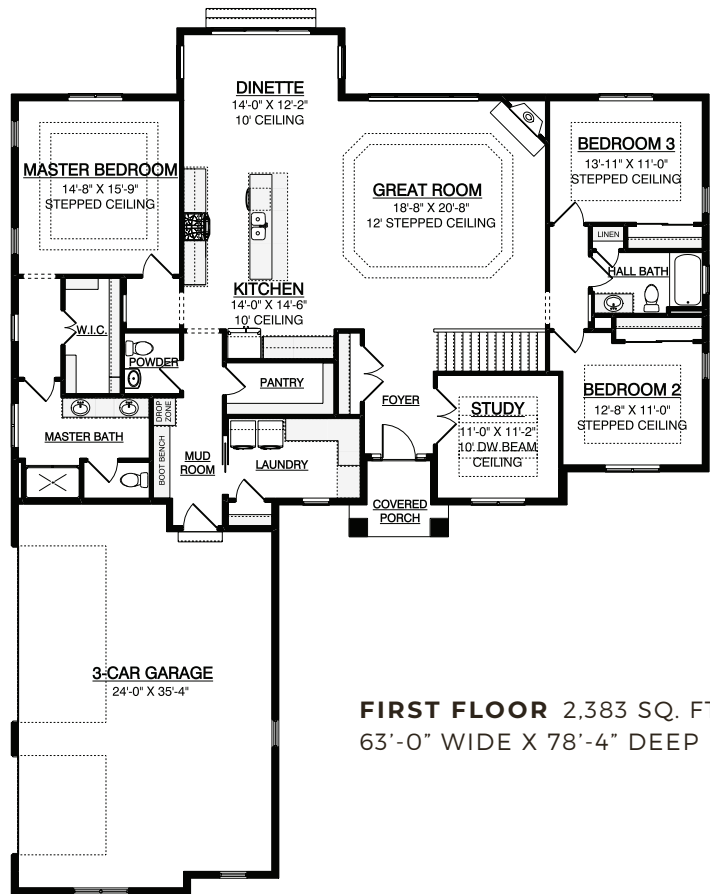
Thomson Hollow Subdivision
6101 S. Primrose Court
New Berlin, WI 53151

2,383 SQ. FT. | 3 BEDROOMS | 2.5 BATHS | SPACIOUS MASTER SUITE | RANCH

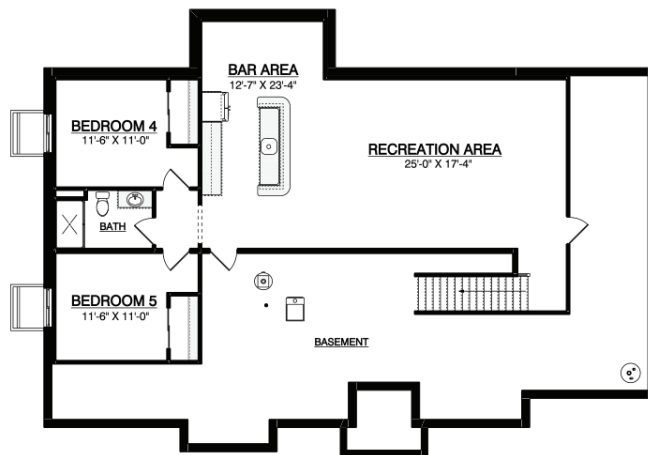
At Espire, our goal is to help families find the perfect design, budget, and plan for their home. Our NuPath Homes division offers a beautiful line of fully-customizable model home plans offered at a unique price point. Forget the one-size-fits-all approach to construction. Let's find the right path for your home together.

STANDARD FEATURES

- Versatile approach and customization
- Design and 3D architecture
- High-touch service experience
- Skilled team, contractor, and supplier network
- Design consultation and plan customization
- Budget and timeline planning
- Building site consultation
- Focus on Energy certified home
- NuPath Series quartz/granite kitchen countertops
- Superior exterior design consisting of a combination of shape, texture, and color
- Limited lifetime high definition shingles
- James Hardie Hardieplank climate engineered primed lap siding



FIRST FLOOR 2,383 SQ. FT.
63'-0" WIDE X 78'-4" DEEP



FINISHED LOWER LEVEL 1,255 SQ. FT.



ESPIRE YOUR HOME FOR BUILDING HOME.



OUR HOME 530 Hartbrook Drive, Hartland, WI 53029 WEB NuPathHomes.com PHONE 262-746-2000

