

THE HICKORY

AT HILLSIDE RIDGE

NU**PATH**
HOMES

2021 PARADE OF
HOMES MODEL



2,281 SQ. FT. | 3 BEDROOMS | 2.5 BATHS | TUCK-AWAY KITCHEN | RANCH

The Hickory is a ranch-style home that feels even more spacious than it looks. Every square foot of this floor plan has been maximized for usable space to suit today's families.

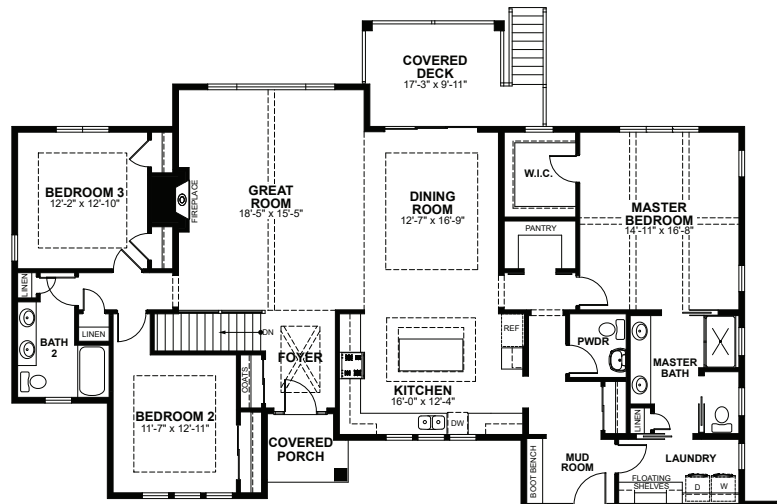
Tall, staggered windows flood the lofty great room with natural light. A covered deck off of the dining room overlooks the backyard. You'll love that the large kitchen is tucked away at the front of the house to offer some privacy while cooking. The spacious master bedroom features a cathedral ceiling with poplar-wrapped beams. Passing through the master bath leads you directly to the laundry room. Two more generously sized bedrooms and a shared bathroom can be found on the other side of the home.

2,281 SQ. FT. | 3 BEDROOMS | 2.5 BATHS | TUCK-AWAY KITCHEN | RANCH

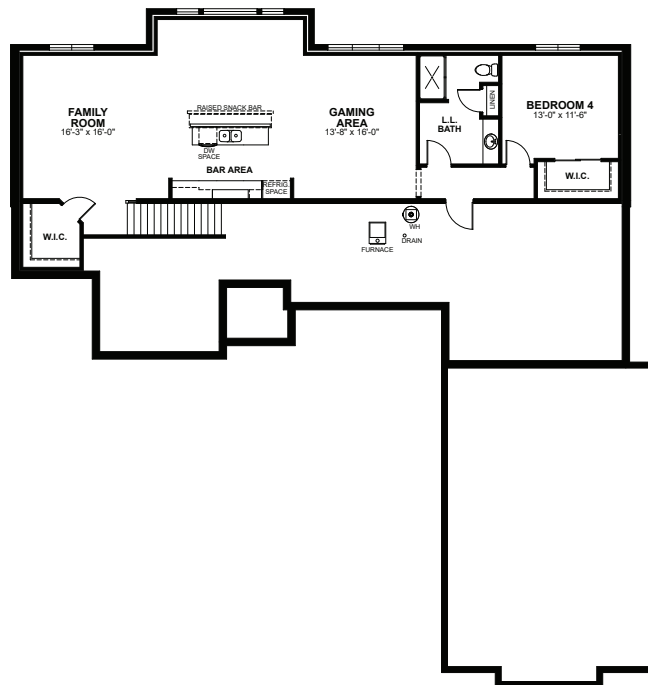
At Espire, our goal is to help families find the perfect design, budget, and plan for their home. Our NuPath Homes division offers a beautiful line of fully-customizable model home plans offered at a unique price point. Forget the one-size-fits-all approach to construction. Let's find the right path for your home together.

STANDARD FEATURES

- Versatile approach and customization
- Design and 3D architecture
- High-touch service experience
- Skilled team, contractor, and supplier network
- Design consultation and plan customization
- Budget and timeline planning
- Building site consultation
- Focus on Energy certified home
- NuPath Series quartz/granite kitchen countertops
- Superior exterior design consisting of a combination of shape, texture, and color
- Limited lifetime high definition shingles
- James Hardie Hardieplank climate engineered primed lap siding



FIRST FLOOR 2,281 SQ. FT.



FINISHED LOWER LEVEL 1,284 SQ. FT.



Espire YOUR HOME FOR BUILDING HOME.



OUR HOME 530 Hartbrook Drive, Hartland, WI 53029 WEB NuPathHomes.com PHONE 262-746-2000

