

# THE JASMINE

## AT AERO PARK

**NU****PATH**  
HOMES

SPACIOUS  
OPEN-CONCEPT  
FLOOR PLAN



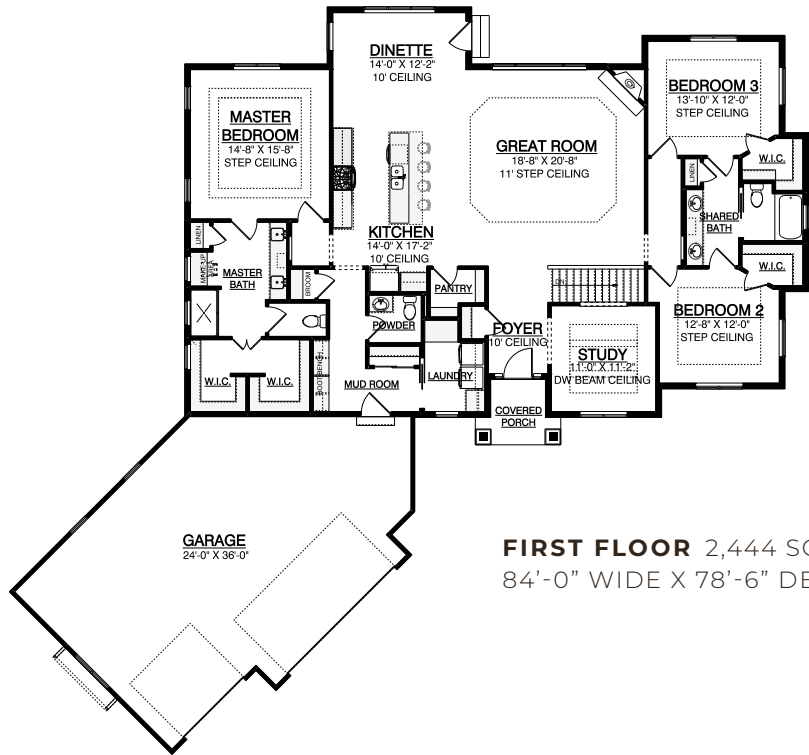
**2,444 SQ. FT. | 3 BEDROOMS | 2.5 BATHS | 3 CAR GARAGE | RANCH**

The Jasmine model offers many of the same amazing features as its predecessor, the Cypress. The overall functionality and flow of this home's layout is not what you'd expect from an open-concept split ranch. With nearly 2,500 square feet, the Jasmine utilizes space by limiting hallways and focusing on open-concept living. The shared bathroom provides a practical, but spacious Jack and Jill layout. Each bedroom features sizable walk-in closets. The canted garage offers ample storage space in the already spacious three-car garage.

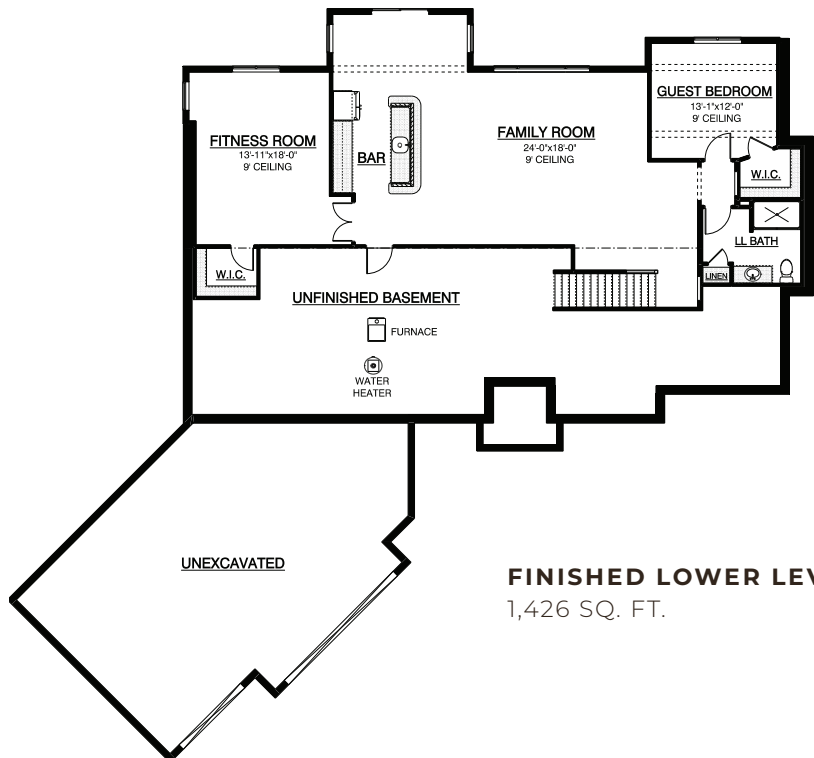
At Espire, our goal is to help families find the perfect design, budget and plan for their home. Our NuPath Homes division offers a beautiful line of fully-customizable model home plans offered at a unique price point. Forget the one-size-fits-all approach to construction. Let's find the right path for your home together.

**STANDARD FEATURES**

- Versatile approach and customization
- Design and 3D architecture
- High-touch service experience
- Skilled team, contractor, and supplier network
- Design consultation and plan customization
- Budget and timeline planning
- Building site consultation
- Focus on Energy certified home
- NuPath Series quartz/granite kitchen countertops
- Superior exterior design consisting of a combination of shape, texture, and color
- Limited lifetime high definition shingles
- James Hardie Hardieplank climate engineered primed lap siding



**FIRST FLOOR** 2,444 SQ. FT.  
84'-0" WIDE X 78'-6" DEEP



**FINISHED LOWER LEVEL**  
1,426 SQ. FT.

