



# THE JUNIPER AT AERO PARK

2020  
PARADE  
OF HOMES  
MODEL



**3,292 SQ. FT. | 3 BEDROOMS | 2.5 BATHS | TOWER STAIRCASE | RANCH**

The Juniper by Espire Homes is a ranch-style home designed with flow and functionality in mind. Experience the benefits of open-concept living with 13' ceilings and expansive windows offering an abundance of natural light. The great room has a glamorous stepped ceiling with wood and drywall detailing. The kitchen offers dual islands, a beverage center, and seating. Off of the dinette is the hearth room featuring a stone and tongue-and-groove wood planked fireplace. The master suite is an oasis featuring a luxurious bathroom with a cathedral ceiling, breathtaking tile work, walk-in shower, and dressing area.

A unique tower staircase connects the main level to a finished lower level. This space serves as your home cinema, with a sunken theatre room and bar area outfitted with food and beverages.

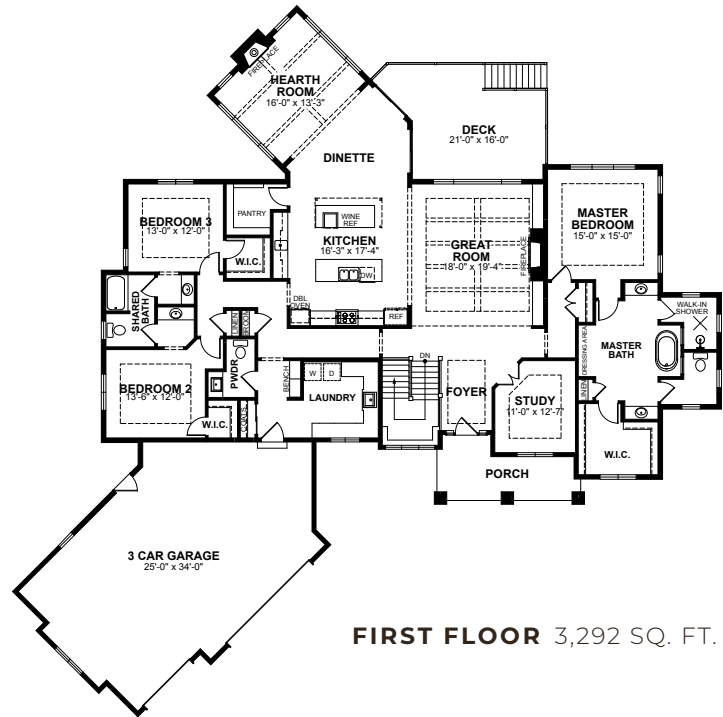


3,292 SQ. FT. | 3 BEDROOMS | 2.5 BATHS | TOWER STAIRCASE | RANCH

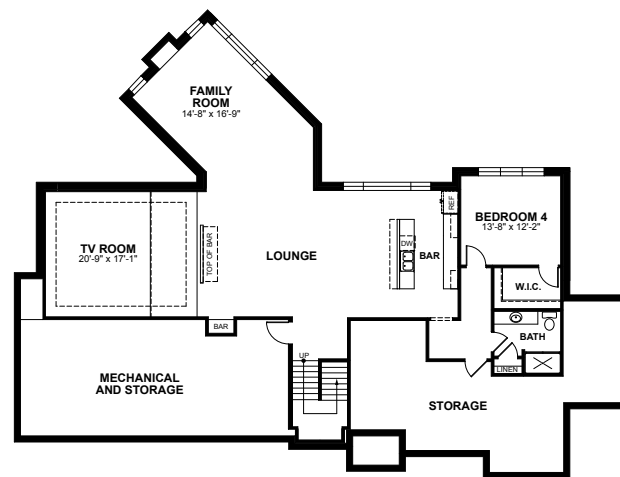
At Espire, our goal is to help families find the perfect design, budget, and plan for their home. Espire Homes is our signature division of custom luxury homes featuring high-end materials and finishes. Forget the one-size-fits-all approach to construction. Our flexible, comprehensive approach allows you to scale "Home" to what's right for you.

## STANDARD FEATURES

- Versatile approach and customization
- Design and 3D architecture
- High-touch service experience
- Skilled team, contractor, and supplier network
- Design consultation and plan customization
- Budget and timeline planning
- Building site consultation
- Focus on Energy certified home
- Espire Series quartz/granite kitchen countertops
- Superior exterior design consisting of combination of shape, texture and color
- Limited lifetime high definition shingles
- James Hardie Hardieplank climate engineered primed lap siding



FIRST FLOOR 3,292 SQ. FT.



FINISHED LOWER LEVEL 1,755 SQ. FT.



**Esquire** YOUR HOME FOR BUILDING **HOME.**



OUR HOME 530 Hartbrook Drive, Hartland, WI 53029 WEB [EspireHomes.com](http://EspireHomes.com) PHONE 262-746-2000

