



# THE MADRONO I AT SWAN VIEW FARMS

2021  
PARADE  
OF HOMES  
MODEL



**3,550 SQ. FT. | 4 BEDROOMS | 2.5 BATHS | HIDEAWAY LOFT | TWO-STORY**

The Madrono I is a floor plan you know and love, but this year's Parade model comes with a few fun twists!

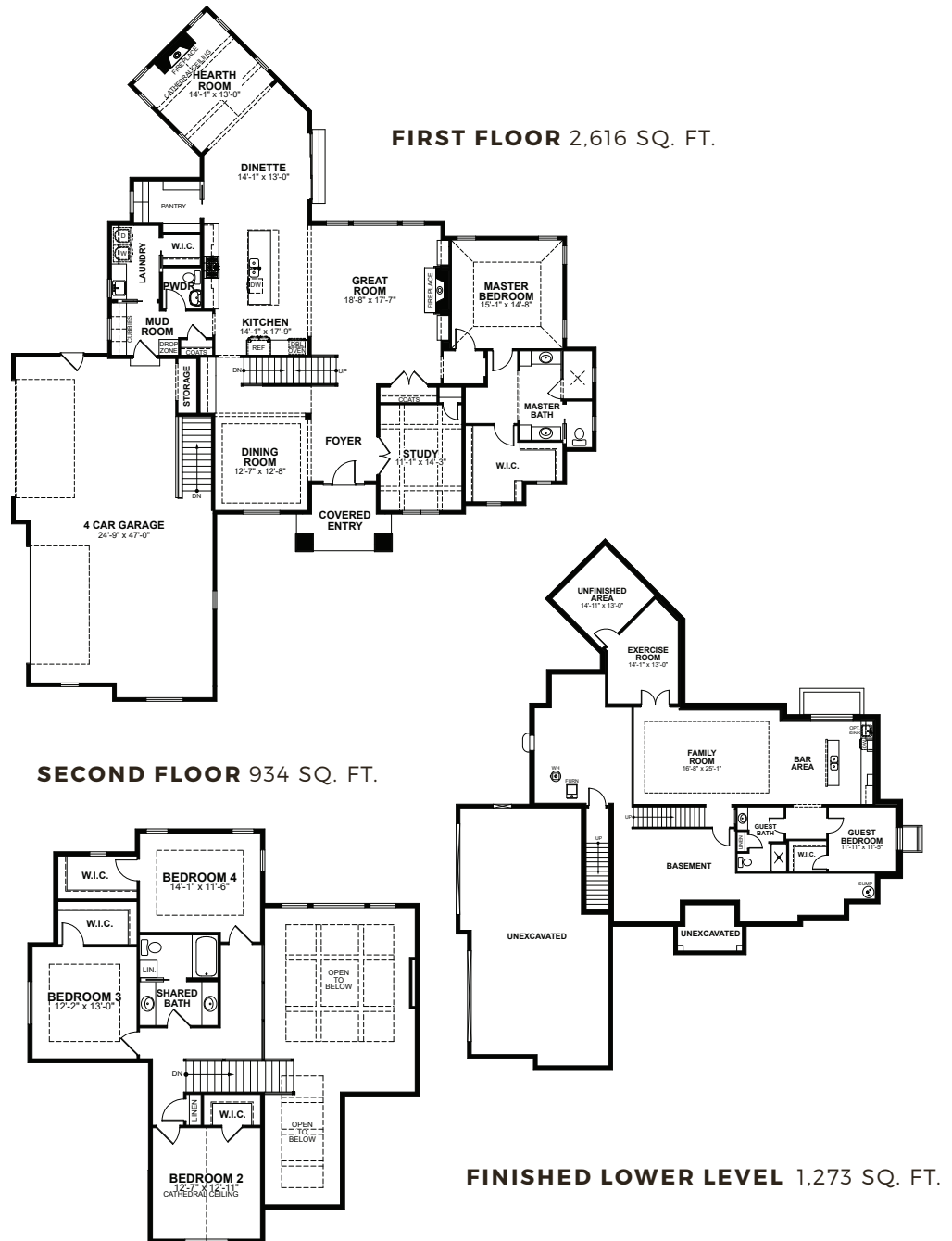
One prominent feature is the four-car garage. The open-concept living space stars a great room with two-story ceilings and built-ins surrounding the fireplace. A hearth room features wood-wrapped beams and a stunning fireplace with floor-to-ceiling stonework. The private master suite incorporates an enormous walk-in closet and a master bath with his and hers vanities. For this version of the Madrono I, we swapped the closet and master bath to provide more storage space. The second floor boasts three large bedrooms and a hideaway loft with dramatic views into the great room.

**3,550 SQ. FT. | 4 BEDROOMS | 2.5 BATHS | HIDEAWAY LOFT | TWO-STORY**

At Espire, our goal is to help families find the perfect design, budget, and plan for their home. Espire Homes is our signature division of custom luxury homes featuring high-end materials and finishes. Forget the one-size-fits-all approach to construction. Our flexible, comprehensive approach allows you to scale "Home" to what's right for you.

**STANDARD FEATURES**

- Versatile approach and customization
- Design and 3D architecture
- High-touch service experience
- Skilled team, contractor, and supplier network
- Design consultation and plan customization
- Budget and timeline planning
- Building site consultation
- Focus on Energy certified home
- Espire Series quartz/ granite kitchen countertops
- Superior exterior design consisting of combination of shape, texture, and color
- Limited lifetime high definition shingles
- James Hardie Hardieplank climate engineered primed lap siding



**Esquire** YOUR HOME FOR BUILDING HOME.



**OUR HOME** 530 Hartbrook Drive, Hartland, WI 53029 **WEB** EspireHomes.com **PHONE** 262-746-2000

