



THE MADRONO II AT WINDRUSH

**LUXURIOUS
FAMILY
HOME**



3,350 SQ. FT. | 4 BEDROOMS | 3.5 BATHS | PRIVATE MASTER SUITE | TWO-STORY

Much like its predecessor, The Madrono II is the cross-section of luxury, functionality, and serenity. Madrono II updates include a new elevation featuring taller stonework, metal roofs, additional windows for natural light, a larger dinette, updated ceiling design, and an optional lower level. This updated home design offers amenities your entire family will want to experience.

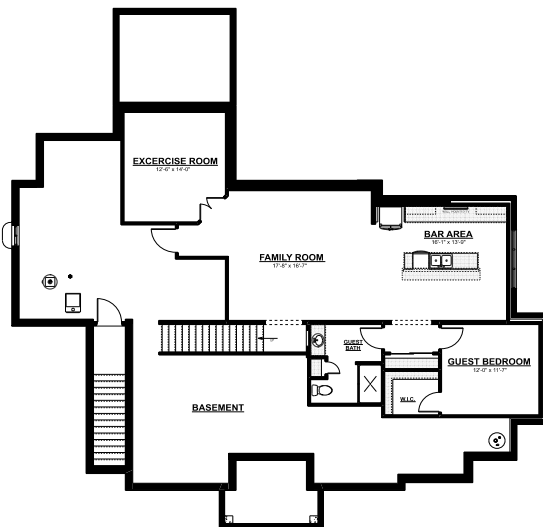
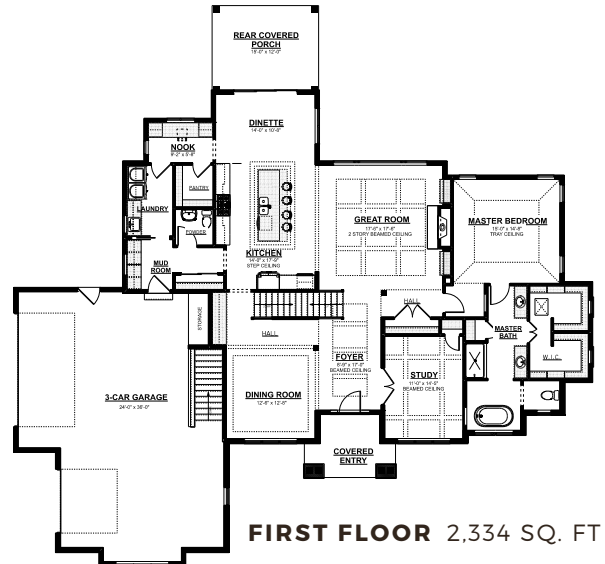
The open-concept space features two-story beamed ceilings leading to a large study and walk-through nook. The gourmet kitchen features an oversized island. The formal dining room includes a built-in buffet. Enjoy a private master suite incorporating a signature his & hers walk-in closet, master bath with freestanding tub, and spacious shower. The second floor boasts three large bedrooms with walk-in closets, a shared bathroom, and an additional hall bathroom. Finally, enjoy the perfect hideaway loft with dramatic views into the great room.

3,350 SQ. FT. | 4 BEDROOMS | 3.5 BATHS | PRIVATE MASTER SUITE | TWO-STORY

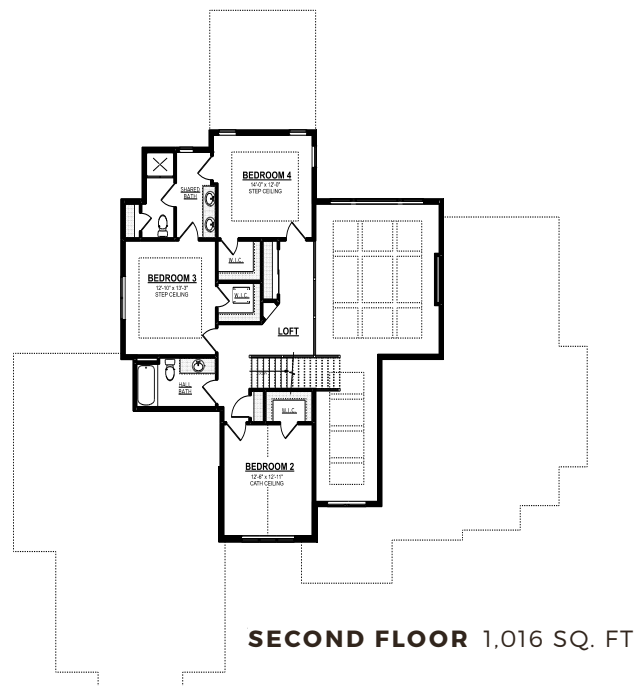
At Espire, our goal is to help families find the perfect design, budget, and plan for their home. Espire Homes is our signature division of custom luxury homes featuring high-end materials and finishes. Forget the one-size-fits-all approach to construction. Our flexible, comprehensive approach allows you to scale "Home" to what's right for you.

STANDARD FEATURES

- Versatile approach and customization
- Design and 3D architecture
- High-touch service experience
- Skilled team, contractor, and supplier network
- Design consultation and plan customization
- Budget and timeline planning
- Building site consultation
- Focus on Energy Certified New Home



LOWER LEVEL 1,226 SQ. FT



Espire YOUR HOME FOR BUILDING **HOME.**



OUR HOME 530 Hartbrook Drive, Hartland, WI 53029 **WEB** EspireHomes.com **PHONE** 262-746-2000

