



THE ACACIA II

AT STONE RIDGE OF MERTON

2022
PARADE
OF HOMES
MODEL



3,071 SQ. FT. | 3 BEDROOMS | 2.5 BATHS | BONUS STORAGE | RANCH

The Acacia II offers the ideal ranch-style layout for modern families. Playing off of our original Acacia model, this open floor plan offers even more storage space and functional features.

We've increased the space this home offers from 2,754 square feet to a massive 3,071 square feet. At the rear of the canted 3-car garage, you'll find a storage area and a secondary double-door entrance. Through the covered entryway, discover an expansive great room with 12-foot beamed ceilings and a luxurious kitchen with attached dinette. The covered porch oversees a private pool, while a relocated drop zone and powder room provide additional convenience. The master bedroom boasts a double-stepped ceiling, divided walk-in closets, and an en suite bath. The spa-like shower in the master bathroom makes this a perfect place to unwind from a long day.

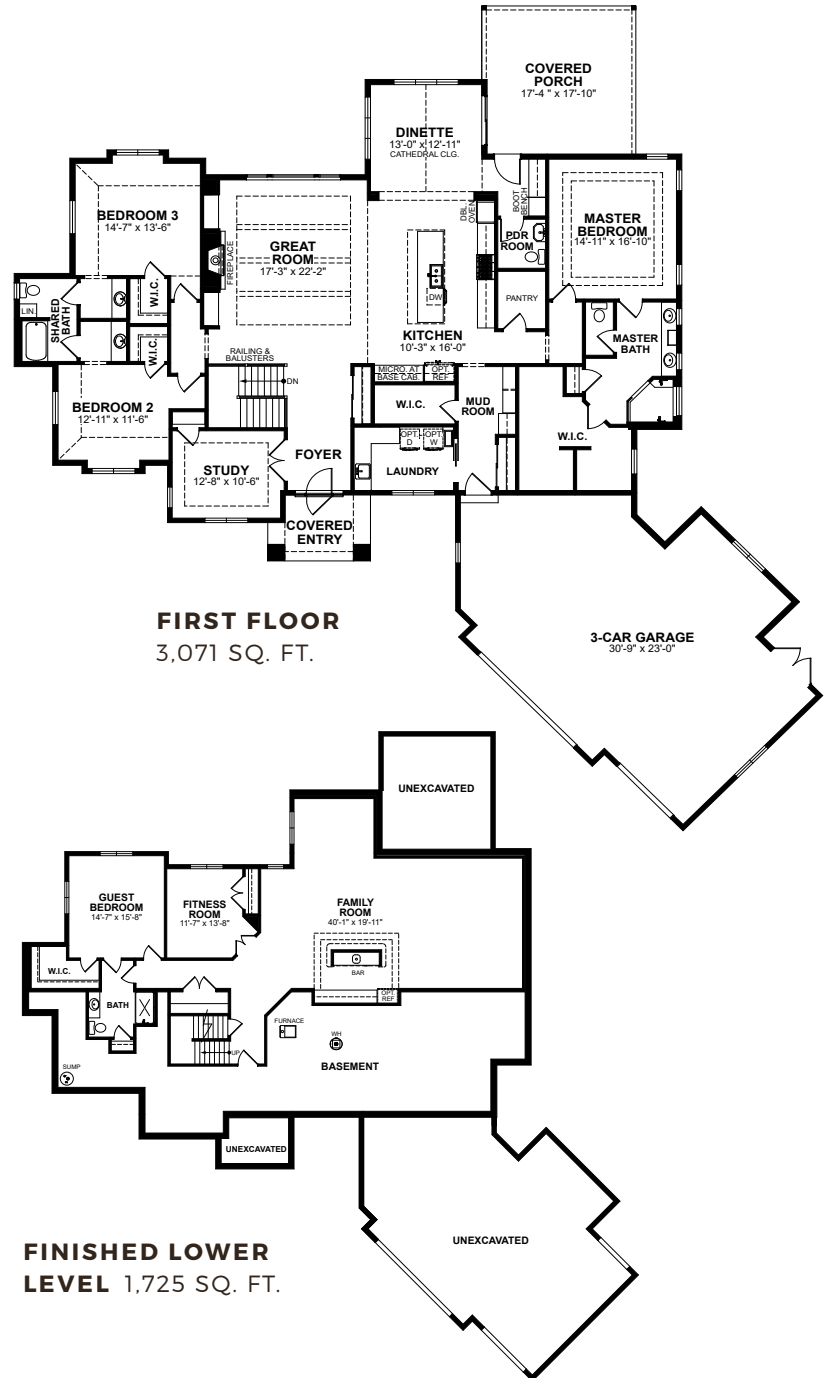
OUR HOME 530 Hartbrook Drive, Hartland, WI 53029 **WEB** [EspireHomes.com](https://www.EspireHomes.com) **PHONE** 262-746-2000

3,071 SQ. FT. | 3 BEDROOMS | 2.5 BATHS | BONUS STORAGE | RANCH

At Espire, our goal is to help families find the perfect design, budget, and plan for their home. Espire Homes is our signature division of custom luxury homes featuring high-end materials and finishes. Forget the one-size-fits-all approach to construction. Our flexible, comprehensive approach allows you to scale "Home" to what's right for you.

STANDARD FEATURES

- Versatile approach and customization
- Design and 3D architecture
- High-touch service experience
- Skilled team, contractor, and supplier network
- Design consultation and plan customization
- Budget and timeline planning
- Building site consultation
- Focus on Energy certified home
- Espire Series quartz/ granite kitchen countertops
- Superior exterior design consisting of combination of shape, texture, and color
- Limited lifetime high definition shingles
- James Hardie Hardieplank climate engineered primed lap siding



Espire YOUR HOME FOR BUILDING **HOME.**



OUR HOME 530 Hartbrook Drive, Hartland, WI 53029 **WEB** EspireHomes.com **PHONE** 262-746-2000

