

THE REDWOOD

AT REDFORD HILLS

NU**PATH**
HOMES

2023 PARADE OF
HOMES MODEL



2,935 SQ. FT. | 4 BEDROOMS | 3.5 BATHS | SPACIOUS OWNER'S SUITE | TWO-STORY

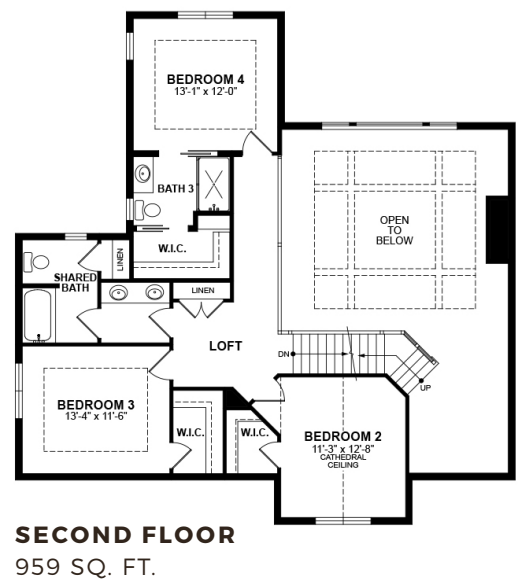
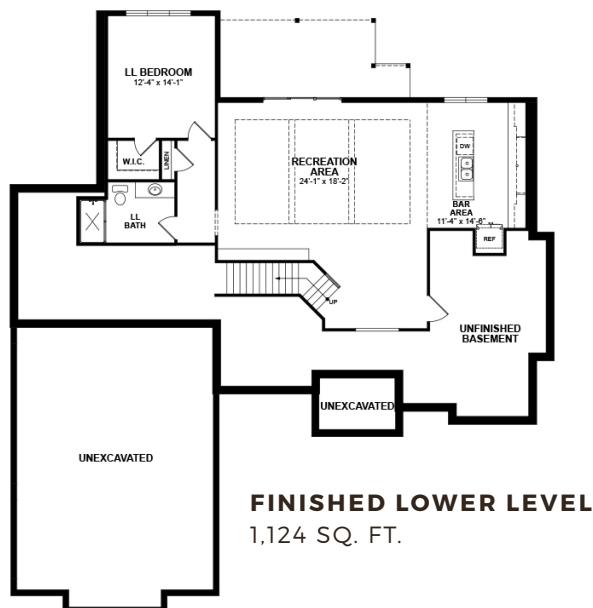
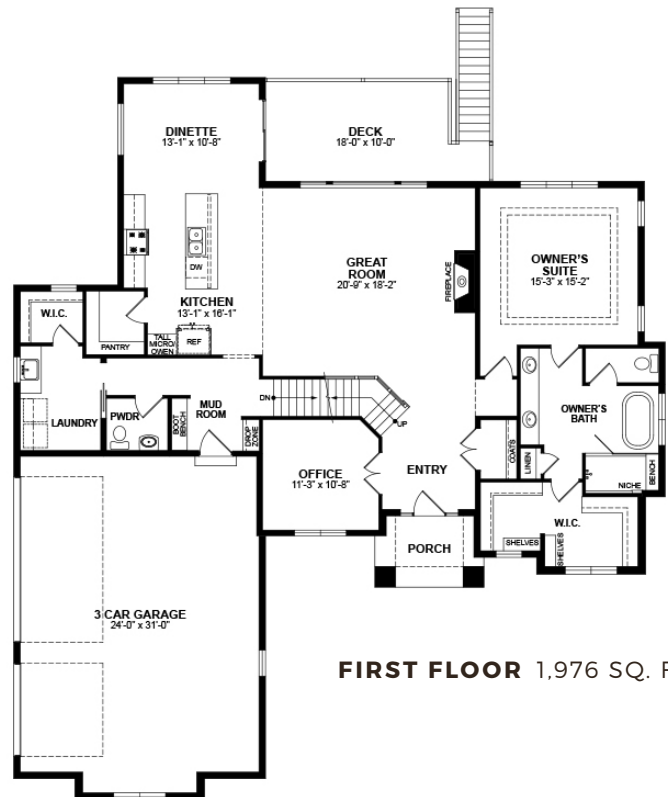
NuPath Homes is proud to introduce The Redwood design, a new plan that takes the popular features of The Cottonwood while adding more square footage and functionality. The home's exterior makes a remarkable first impression with its cedar and stone columns and board and batten siding.

Upon entry, you're greeted by a two-story great room and a wall of windows bringing in natural light. To the left is the spacious kitchen, which offers a snack bar and wood range hood. The first-floor owner's suite showcases a gorgeous private bathroom containing a double vanity, soaking tub, and an oversized shower. The wide staircase leading to the second floor contains three bedrooms and two bathrooms.

At Espire, our goal is to help families find the perfect design, budget, and plan for their home. Our NuPath Homes division offers a beautiful line of fully-customizable model home plans offered at a unique price point. Forget the one-size-fits-all approach to construction. Let's find the right path for your home together.

STANDARD FEATURES

- Versatile approach and customization
- Design and 3D architecture
- High-touch service experience
- Skilled team, contractor, and supplier network
- Design consultation and plan customization
- Budget and timeline planning
- Building site consultation
- Focus on Energy certified home
- NuPath Series quartz/granite kitchen countertops
- Superior exterior design consisting of a combination of shape, texture, and color
- Limited lifetime high definition shingles
- James Hardie Hardieplank climate engineered primed lap siding



Espire YOUR HOME FOR BUILDING HOME.

NUPATH
HOMES